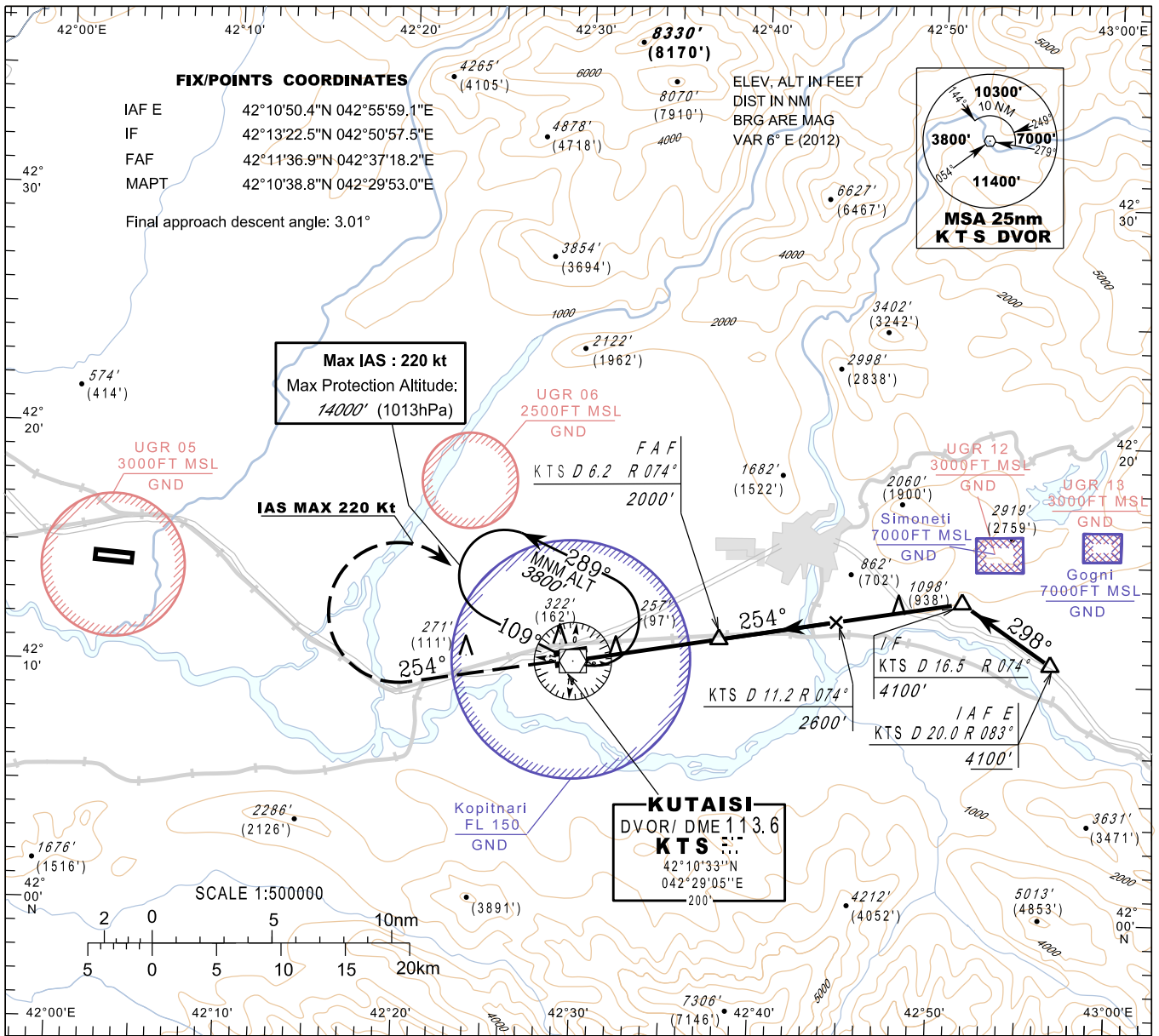


**INSTRUMENT
APPROACH
CHART - ICAO**

AERODROME ELEV 160'
HEIGHTS RELATED TO
THR RWY 25 - ELEV 160'

APP 127.1
TWR 125.5

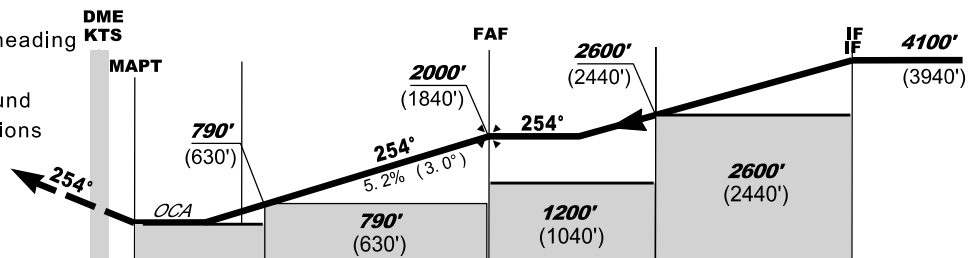
**KUTAISI/Kopitnari (UGKO)
VOR/DME z
RWY 25**



MISSED APPROACH

Climb 3800' (3640') runway heading
Mag Track 254°
At 7nm KTS turn right inbound
KTS and follow ATC instructions
IAS Max 220 Kt

TRANSITION ALT 7000'



| | | | | | |
|--------------|-----|-----|-----|------|------|
| THR (NM) | 0 | 1.8 | 5.6 | 10.6 | 15.9 |
| KTS DME (NM) | 0.6 | 2.4 | 6.2 | 11.2 | 16.5 |

REF HGT: THR ELEV.

| | | | | | | | | | | | |
|----------------------|---------|-------------------|--------------|-------------|-------------|-------------|-----------|-----------|-----------|-------|-------|
| | | kt | 70 | 85 | 100 | 115 | 130 | 145 | 160 | 185 | |
| | | FAF - MAPT 5.6 nm | min:s | 4: 48 | 3: 58 | 3: 22 | 2: 55 | 2: 35 | 2: 19 | 2: 06 | 1: 49 |
| | | Rate of descent | ft/min | 372 | 452 | 531 | 611 | 690 | 770 | 850 | 981 |
| Straight-in Approach | VOR/DME | 503 (343) | DME KTS NM | 6 | 5 | 4 | 3 | 2.4 | 2 | | |
| | | | ALT (HGT) ft | 1930 (1770) | 1610 (1450) | 1300 (1140) | 980 (820) | 790 (630) | 660 (500) | | |