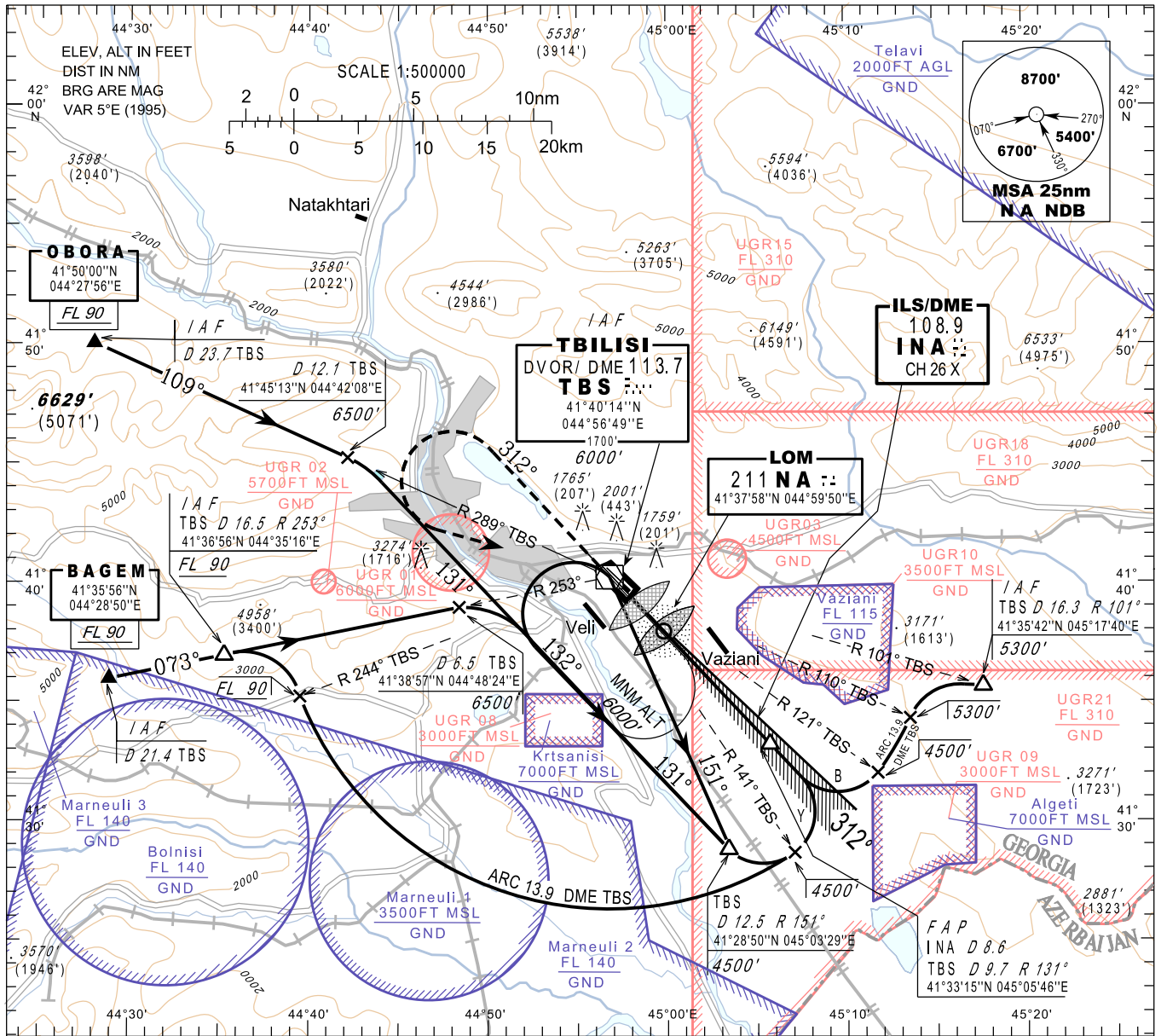


**INSTRUMENT  
APPROACH  
CHART - ICAO**

AERODROME ELEV 1624'  
HEIGHTS RELATED TO  
THR RWY 31L - ELEV 1558'

APP 134.600  
TWR 119.000 (Primary)  
128.000 (Secondary)

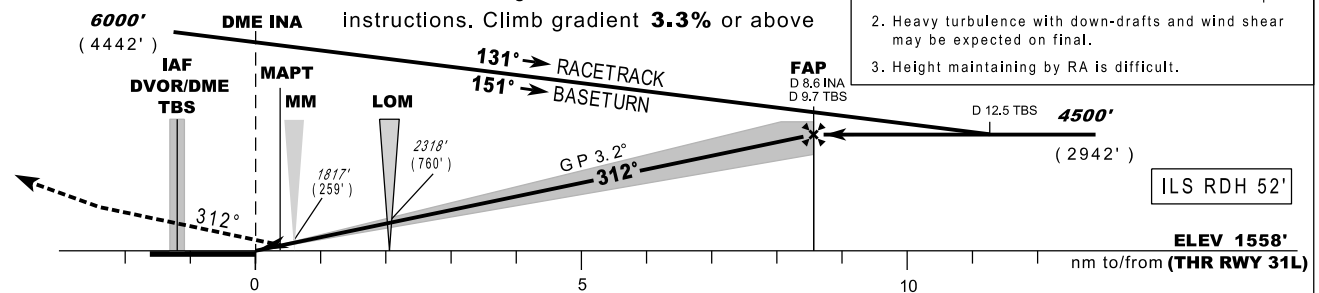
**TBILISI/Tbilisi (UGTB)  
ILS/DME or LOC  
RWY 31L**



TRANSITION ALT 7600'

**MISSED APPROACH**  
Climb on radial **312°** to **4900'**, then turn left to **TBS**, climbing to **6000'** and follow **ATC** instructions. Climb gradient **3.3%** or above

- WARNING:**
1. Identify TBILISI/Tbilisi airport before landing in order not to mistake military Vaziani aerodrome located south-east 6 nm from ARP of TBILISI/Tbilisi airport.
  2. Heavy turbulence with down-drafts and wind shear may be expected on final.
  3. Height maintaining by RA is difficult.



Straight-in Approach	ILS CAT I	<b>1728</b> (170)	<b>1748</b> (190)							
	GP INOP	<b>2140</b> (580)								
DME INA NM		9	8	7	6	5	4	3	2	1
ALT (HGT) ft		<b>4631</b> (3073)	<b>4295</b> (2737)	<b>3960</b> (2402)	<b>3624</b> (2066)	<b>3288</b> (1730)	<b>2953</b> (1395)	<b>2617</b> (1059)	<b>2281</b> (723)	<b>1946</b> (388)

FAP - MAPT <b>8.2 nm</b>	kt	70	80	90	100	120	140	160	180	
	min:s	<b>7: 02</b>	<b>6: 09</b>	<b>5: 28</b>	<b>4: 55</b>	<b>4: 06</b>	<b>3: 31</b>	<b>3: 04</b>	<b>2: 44</b>	
Rate of descent		ft/min	<b>392</b>	<b>448</b>	<b>504</b>	<b>560</b>	<b>672</b>	<b>784</b>	<b>896</b>	<b>1008</b>

Changes: Frequency purpose