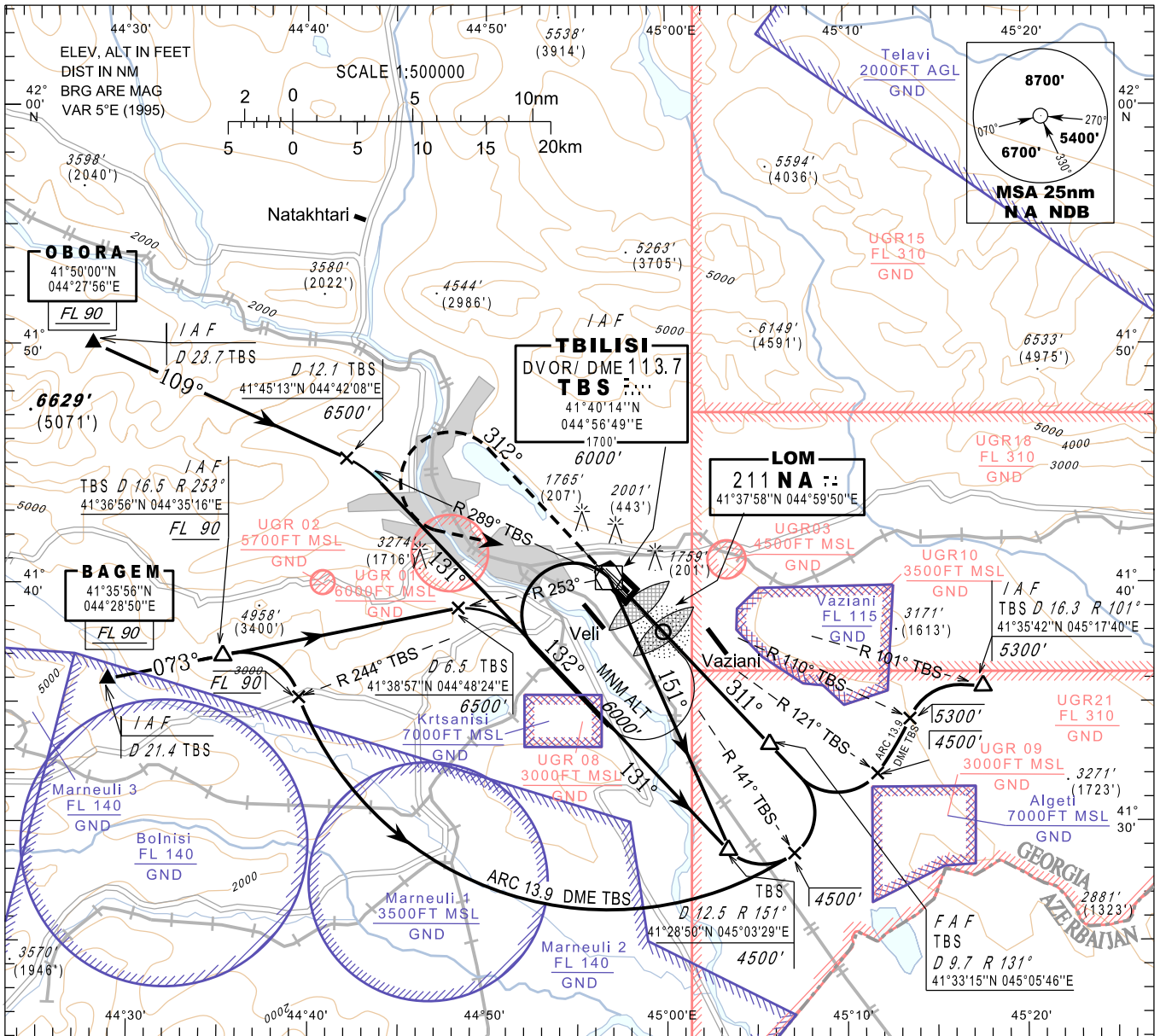


**INSTRUMENT
APPROACH
CHART - ICAO**

AERODROME ELEV 1624'
HEIGHTS RELATED TO
THR RWY 31L - ELEV 1558'

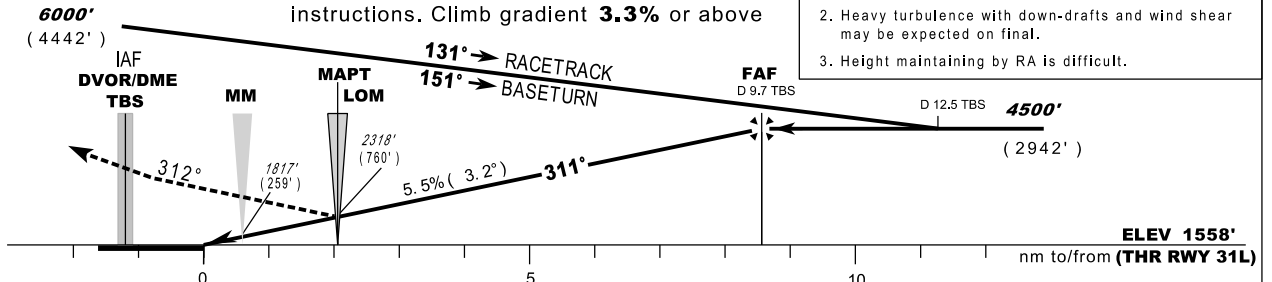
APP 134.600
TWR 119.000 (Primary)
128.000 (Secondary)

**TBILISI/Tbilisi (UGTB)
VOR/DME
RWY 31L**



MISSED APPROACH
TRANSITION ALT 7600'
Climb on radial **312°** to **4900'**, then turn left to **TBS**, climbing to **6000'** and follow **ATC** instructions. Climb gradient **3.3%** or above

- WARNING:**
1. Identify TBILISI/Tbilisi airport before landing in order not to mistake military Vaziani aerodrome located south-east 6 nm from ARP of TBILISI/Tbilisi airport.
 2. Heavy turbulence with down-drafts and wind shear may be expected on final.
 3. Height maintaining by RA is difficult.



Changes: Frequency purpose

		kt		70	80	90	100	120	140	160	180		
FAF - MAPT 6.4 nm		min:s	5: 32	4: 50	4: 18	3: 52	3: 13	2: 46	2: 25	2: 09			
Rate of descent		ft/min	400	450	510	560	680	790	900	1010			
OCA/H		A	B	C	D	DME TBS NM	9	8	7	6	5	4	3
Straight-in Approach DVOR/DME		2340 (780)				ALT (HGT) ft	4270 (2710)	3940 (2380)	3600 (2040)	3260 (1700)	2930 (1370)	2593 (1030)	2260 (700)