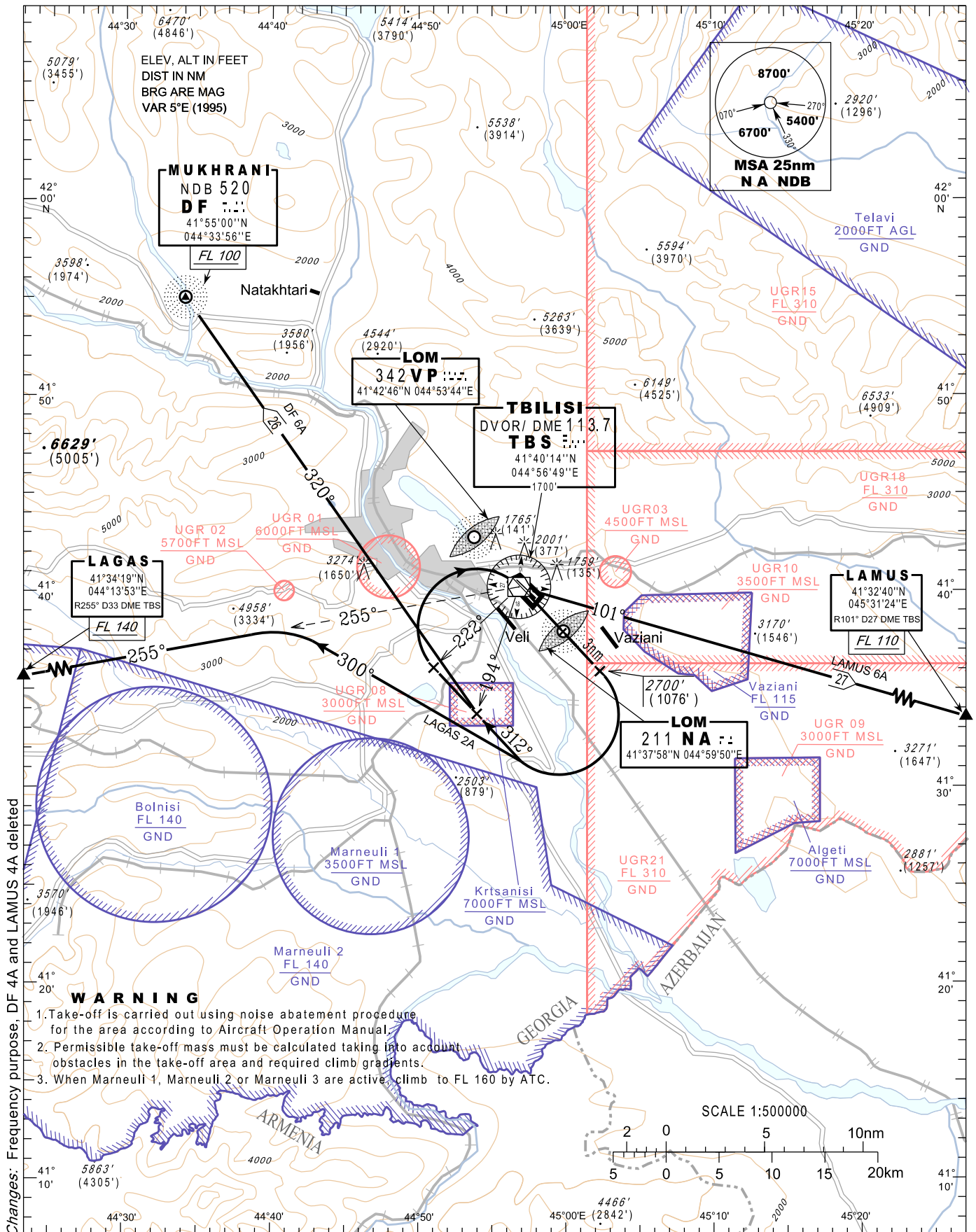


**STANDARD DEPARTURE CHART-  
INSTRUMENT (SID) - ICAO**

**TBILISI/Tbilisi (UGTB)  
RWY 13R**

TRANSITION ALTITUDE 7600'	APP 134.600 TWR 119.000 (Primary) 128.000 (Secondary)
------------------------------	---

LAMUS 6A LAGAS 2A DF 6A



Changes: Frequency purpose, DF 4A and LAMUS 4A deleted