

AERODROME CHART-ICAO

NATAKHTARI (UGSA)

41°55'14"N ELEV 1687'
044°43'10"E

NATAKHTARI
Supervisor 131.750

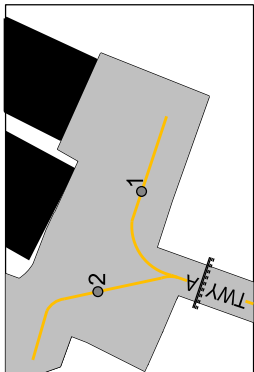
RWY	DIRECTION	THR	BEARING STRENGTH
10	102°	41°55'21.77"N 044°42'30.76"E	PCN 12/R/B/W/T RWY, TWY and apron
28	282°	41°55'15.13"N 044°42'56.19"E	

LEGEND

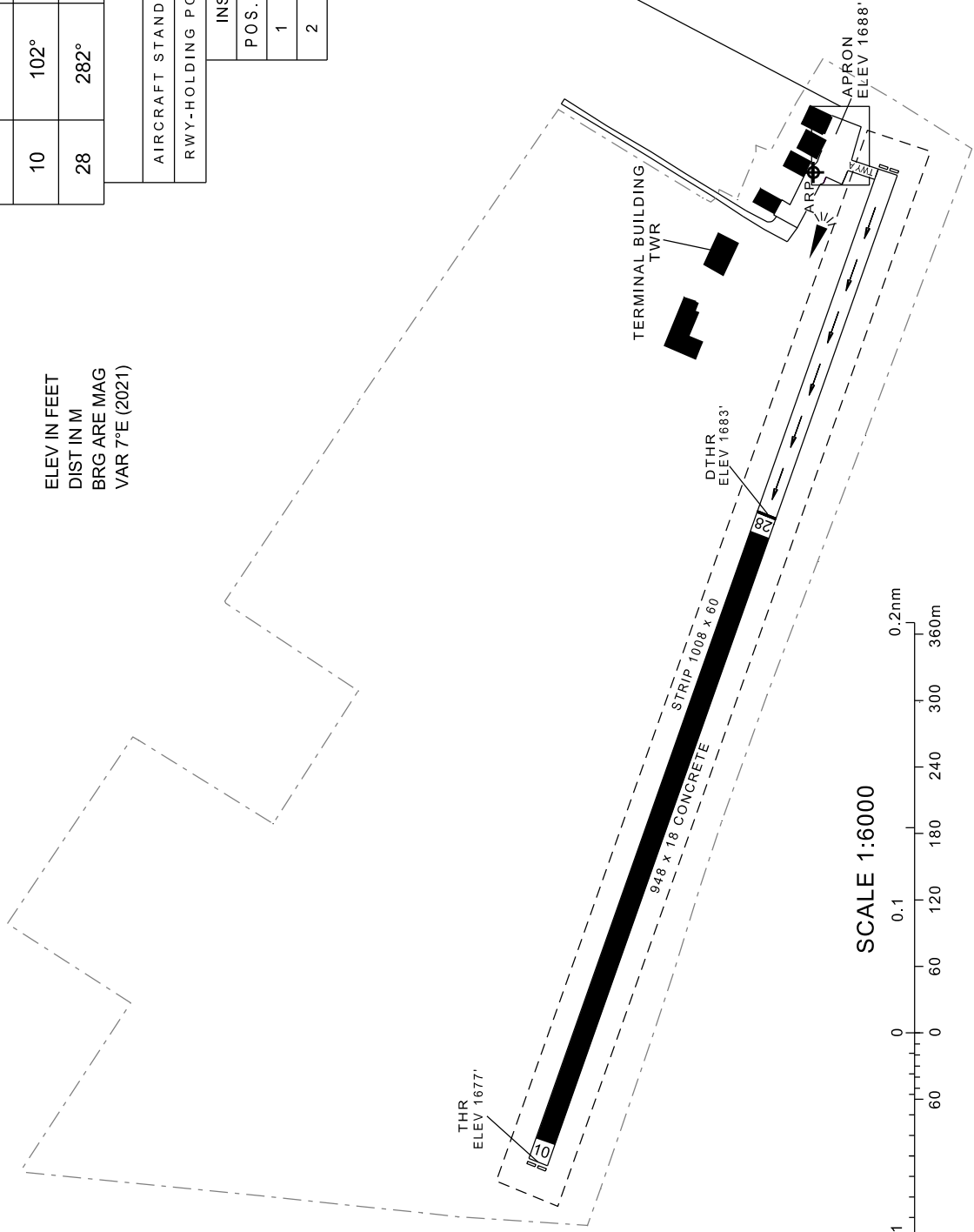
AIRCRAFT STAND	⊙1
RWY-HOLDING POSITION MARKING PATTERN A	

INS COORDINATES FOR AIRCRAFT STANDS

POS.	COORDINATES
1	41°55'13.00"N 044°43'10.67"E
2	41°55'13.27"N 044°43'09.79"E

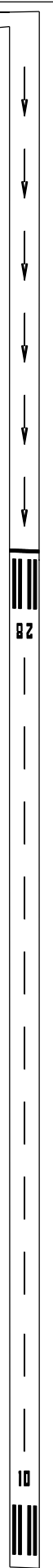


ELEV IN FEET
DIST IN M
BRG ARE MAG
VAR 7°E (2021)



TAXIWAY WIDTH, SURFACE
TWY A : 10 M Concrete

MARKING AIDS RWY 10/28 AND EXIT TWY



Changes: MAG VAR and direction