

UGSA — NATAKHTARI

UGSA AD 2.1 Aerodrome location indicator and name

UGSA — NATAKHTARI

UGSA AD 2.2 Aerodrome geographical and administrative data

1	ARP coordinates and site at AD	415514N 0444310E 5 M from Hangar for visiting aircraft
2	Direction and distance from city	8 KM from Mtskheta center
3	Elevation/Reference temperature	1687 FT/29° C
4	Geoid undulation at AD ELEV PSN	50 FT
5	MAG VAR/Annual change	7° E (2021)/NIL
6	AD Administration, address, telephone, telefax, telex, AFS	OPERATOR: LTD SERVICEAIR Post: NATAKHTARI 0038 MTSKHETA GEORGIA Tel: +995 32 242 84 28, +995 599 65 90 90 Email: admin@serviceair.ge Email: info@serviceair.ge
7	Types of traffic permitted (IFR/VFR)	VFR
8	Remarks	NIL

UGSA AD 2.3 Operational hours

1	AD Administration	MON-FRI from 05:30 to 14:00; SAT - SUN On Request
2	Customs and immigration	NIL
3	Health and sanitation	Health: On Request Sanitation: On Request
4	AIS Briefing Office	NIL
5	ATS Reporting Office (ARO)	NIL
6	MET Briefing Office	NIL
7	ATS	NIL
8	Fuelling	On Request
9	Handling	On Request
10	Security	On Request
11	De-icing	NIL
12	Remarks	NIL

UGSA AD 2.4 Handling services and facilities

1	Cargo-handling facilities	NIL
2	Fuel/oil types	Fuel: TS1(GOST 10227) Oil: NIL
3	Fuelling facilities/capacity	Tank capacity of 7500 liters, flow rate 400 liters/minute Tel: (+995 599) 65 90 95 Email: admin@serviceair.ge
4	De-icing facilities	NIL

5	Hangar space for visiting aircraft	Available. There are 4 hangars with a total area of 2300 sq.m without heating
6	Repair facilities for visiting aircraft	Available minor repairs for ultra light and light aircraft
7	Remarks	NIL

UGSA AD 2.5 Passenger facilities

1	Hotels	Available in the city
2	Restaurants	Available in the city and at AD
3	Transportation	Taxis from AD
4	Medical facilities	First medical aid at AD and hospital in the city
5	Bank and Post Office	Bank: Available in the city Post office: Available in the city
6	Tourist Office	Available at AD
7	Remarks	NIL

UGSA AD 2.6 Rescue and fire fighting services

1	AD category for fire fighting	CAT 2
2	Rescue equipment	Available 1 Fire truck
3	Capability for removal of disabled aircraft	Available, L410
4	Remarks	Contact information of the aerodrome coordinator for removal of disabled aircraft: Tel: +995599659095 E-mail: admin@serviceair.ge

UGSA AD 2.7 Seasonal availability - clearing

1	Types of clearing equipment	NIL
2	Clearance priorities	1. RWY 10/28 and TWY 2. Apron 3. Access roads to the Airport Rescue Service
3	Remarks	Aerodrome surface cleaning when necessary. The snow plan and friction measuring details see in section AD 1.2.2

UGSA AD 2.8 Aprons, taxiways and check locations/positions data

1	Apron surface and strength	Designation	Surface		Strength
		APRON	Concrete		12/R/B/W/T
2	Taxiway width, surface and strength	Designation	Width	Surface	Strength
		TWY A	10 M	Concrete	12/R/B/W/T
3	ACL location and elevation	Apron: Elevation 1688 FT			
4	VOR checkpoints	NIL			
5	INS checkpoints	NIL			
6	Remarks	NIL			

UGSA AD 2.9 Surface movement guidance and control system and markings

1	Aircraft stand ID signs TWY guide lines Visual docking/parking guidance system	NIL
2	RWY and TWY markings and LGT	RWY : Designation, THR, centre line TWY : Centre line, holding position
3	Stop bars	NIL
4	Remarks	NIL

UGSA AD 2.10 Aerodrome Obstacles*In Area 2*

Designator	Type	Coordinates	ELEV	HGT	Marking/LGT type, colour	Remarks
1	2	3	4	5	6	7
UGSA01	Mast	415507.4N 0444315.6E	1805 FT	NIL	Marked NIL	NIL
UGSA02	Mast	415512.0N 0444317.1E	1810 FT	NIL	Marked NIL	NIL

In Area 3

Designator	Type	Coordinates	ELEV	HGT	Marking/LGT type, colour	Remarks
1	2	3	4	5	6	7
UGSA03	Wind Direction Indicator	415513.5N 0444307.5E	1760.0 FT	NIL	Marked NIL	NIL
UGSA04	Mast	415509.8N 0444307.3E	1764.0 FT	NIL	NIL	NIL
UGSA05	Mast	415510.3N 0444305.1E	1765.0 FT	NIL	NIL	NIL
UGSA06	Mast	415510.9N 0444303.0E	1764.0 FT	NIL	NIL	NIL
UGSA07	Mast	415511.5N 0444300.9E	1763.0 FT	NIL	NIL	NIL
UGSA08	Mast	415512.0N 0444258.9E	1763.0 FT	NIL	NIL	NIL
UGSA09	Mast	415512.6N 0444256.9E	1763.0 FT	NIL	NIL	NIL
UGSA10	Mast	415513.1N 0444254.9E	1763.0 FT	NIL	NIL	NIL
UGSA11	Mast	415513.7N 0444253.0E	1763.0 FT	NIL	NIL	NIL
UGSA12	Mast	415514.2N 0444251.1E	1759.0 FT	NIL	NIL	NIL
UGSA13	Mast	415514.7N 0444249.1E	1761.0 FT	NIL	NIL	NIL
UGSA14	Mast	415515.3N 0444247.2E	1760.0 FT	NIL	NIL	NIL
UGSA15	Mast	415515.7N 0444245.2E	1760.0 FT	NIL	NIL	NIL
UGSA16	Mast	415516.3N 0444243.5E	1759.0 FT	NIL	NIL	NIL
UGSA17	Mast	415516.9N 0444241.8E	1757.0 FT	NIL	NIL	NIL
UGSA18	Mast	415520.2N 0444243.1E	1764.0 FT	NIL	NIL	NIL

Designator	Type	Coordinates	ELEV	HGT	Marking/LGT type, colour	Remarks
1	2	3	4	5	6	7
UGSA19	Mast	415513.4N 0444307.9E	1764.0 FT	NIL	NIL	NIL
UGSA20	Bower	415513.3N 0444308.1E	1739.0 FT	NIL	NIL	NIL
UGSA21	Hangar	415514.0N 0444309.7E	1767.0 FT	NIL	NIL	NIL
UGSA22	Tank	415512.3N 0444312.2E	1755.0 FT	NIL	NIL	NIL

UGSA AD 2.11 Meteorological information provided

1	Associated MET Office	NIL
2	Hours of service MET Office outside hours	NIL
3	Office responsible for TAF preparation Periods of validity	NIL
4	Trend forecast Interval of issuance	NIL
5	Briefing/consultation provided	NIL
6	Flight documentation Language(s) used	NIL
7	Charts and other information available for briefing or consultation	NIL
8	Supplementary equipment available for providing information	NIL
9	ATS units provided with information	NIL
10	Additional information (limitation of service etc.)	NIL

UGSA AD 2.12 Runway physical characteristics

RWY Designations	TRUE BRG	Dimensions of RWY	Strength (PCN) and surface of RWY and SWY	THR & RWY end coordinates THR geoid undulation	THR elevation and highest elevation of TDZ of precision APP RWY
1	2	3	4	5	6
10	109.30°	948 M x 18 M	12/R/B/W/T Concrete	THR: 415521.77N 0444230.76E GUND: NIL END: 415511.63N 0444309.61E	THR: 1677 FT TDZ: NIL
28	289.30°			THR: 415515.13N 0444256.19E GUND: NIL END: 415521.77N 0444230.76E	THR: 1683 FT TDZ: NIL

Slope of RWY-SWY	SWY dimensions	CWY dimensions	Strip dimensions	RESA dimensions	Arresting System	OFZ	Remarks
7	8	9	10	11	12	13	14
0.34%	NIL	NIL	1008 M x 60 M	NIL	NIL	NIL	NIL
-0.34%	NIL	NIL		NIL	NIL	NIL	NIL

UGSA AD 2.13 Declared distances

RWY Designator	TORA	TODA	ASDA	LDA	Remarks
1	2	3	4	5	6
10	620 M	620 M	620 M	948 M	NIL
28	948 M	948 M	948 M	620 M	NIL

UGSA AD 2.14 Approach and runway lighting

RWY Designator	APCH LGT type LEN INTST	RTHL colour WBAR	VASIS (MEHT) PAPI	RTZL LEN	RCLL LEN, spacing, colour, INTST	REDL LEN, spacing, colour, INTST	REN colour, WBAR	STWL LEN, colour	Remarks
1	2	3	4	5	6	7	8	9	10
10	NIL	NIL	NIL	NIL	NIL	NIL	NIL	NIL	NIL
28	NIL	NIL	NIL	NIL	NIL	NIL	NIL	NIL	NIL

UGSA AD 2.15 Other lighting and secondary power supply

1	ABN/IBN location, characteristics and hours of operation	NIL
2	LDI location and LGT Anemometer location and LGT	NIL
3	TWY edge and centre line lighting	NIL
4	Secondary power supply/switch-over time	NIL
5	Remarks	NIL

UGSA AD 2.16 Helicopter landing area

1	Coordinates TLOF or THR of FATO	NIL
	Geoid undulation	NIL
2	TLOF and/or FATO elevation	NIL
3	TLOF and FATO area dimensions, surface, strength, marking	NIL
4	True BRG of FATO	NIL
5	Declared distance available	NIL
6	APP and FATO lighting	NIL
7	Remarks	NIL

UGSA AD 2.17 Air traffic services airspace

1	Designation, lateral limits, vertical limits	NATAKHTARI ATZ Circle: radius 2 NM, centred at 415513N 0444309E 1000 FT AGL GND
2	Airspace classification	G
3	Call sign Languages	NIL
4	Transition altitude	NIL

5	Remarks	NIL
---	---------	-----

UGSA AD 2.18 Air traffic services communication facilities

NIL

UGSA AD 2.19 Radio navigation and landing aids

NIL

UGSA AD 2.20 Local aerodrome regulations

1 Airport regulations

At Natakhtari Airport a number of local regulations apply, which are collected in manuals that are available at the Passenger Terminal Building. These manuals include the following:

- a. information about aircraft stands;
- b. information about taxiing from aircraft stands including taxi clearance and engine start-up;
- c. marshaller assistance;
- d. engine start-up and use of auxiliary power unit (APU);
- e. precautions during extreme weather conditions.

A written form of "Local Regulations" may be requested from:

LTD "ServiceAir"
Head Office
Natakhtari, Mtskheta 0038
Georgia
E-mail: admin@serviceair.ge

2 Taxiing to and from stands. Parking on apron and in hangars. Exploitation during winter conditions

Taxiing shall be performed after supervisor's permission on frequency 131.750 MHz (call sign "Natakhtari"), and parking on apron and in hangars are guided by a marshaller on the stand.

During winter conditions areas on apron and taxiway are marked by visual signs. Speed of taxiing on apron or taxiway shall not exceed 5 km/h.

3 Removal of disabled aircraft from runway

When an aircraft is wrecked on a runway, it is the duty of the owner or user of such aircraft to have it removed as soon as possible. If a wrecked aircraft is not removed from the runway as quickly as possible by the owner or user, the aircraft will be removed by the aerodrome authority at the expense of the owner or user.

UGSA AD 2.21 Noise abatement procedures

NIL

UGSA AD 2.22 Flight procedures

Under development

UGSA AD 2.23 Additional information

NIL

UGSA AD 2.24 Charts related to an aerodrome

←	Aerodrome Chart ICAO	AD 2.UGSA-ADC
←	Visual Approach Chart ICAO	AD 2.UGSA-VAC

PAGE INTENTIONALLY LEFT BLANK

AERODROME CHART-ICAO

NATAKHTARI (UGSA)

41°55'14"N
044°43'10"E

ELEV 1687'

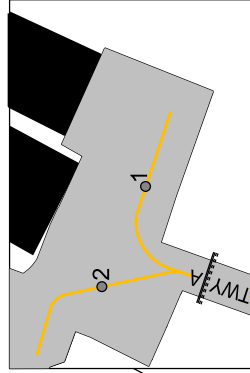
NATAKHTARI
Supervisor 131.750

RWY	DIRECTION	THR	BEARING STRENGTH
10	102°	41°55'21.77"N 044°42'30.76"E	PCN 12/R/B/W/T RWY, TWY and apron
28	282°	41°55'15.13"N 044°42'56.19"E	

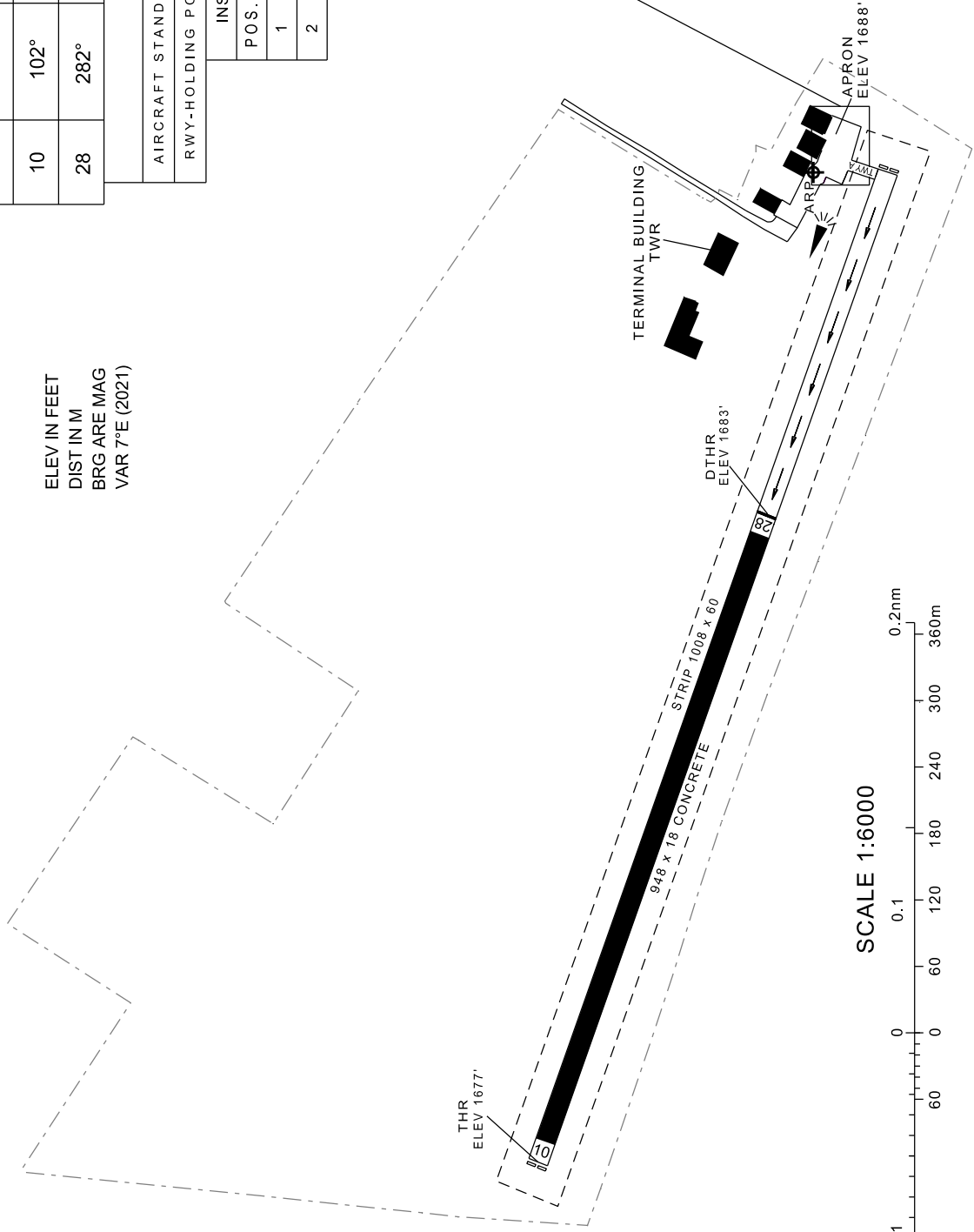
LEGEND

AIRCRAFT STAND	⊙1
RWY-HOLDING POSITION MARKING PATTERN A	

INS COORDINATES FOR AIRCRAFT STANDS	
POS.	COORDINATES
1	41°55'13.00"N 044°43'10.67"E
2	41°55'13.27"N 044°43'09.79"E

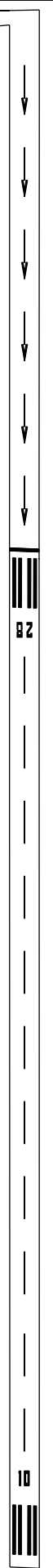


ELEV IN FEET
DIST IN M
BRG ARE MAG
VAR 7°E (2021)



TAXIWAY WIDTH, SURFACE
TWY A : 10 M Concrete

MARKING AIDS RWY 10/28 AND EXIT TWY



Changes: MAG VAR and direction

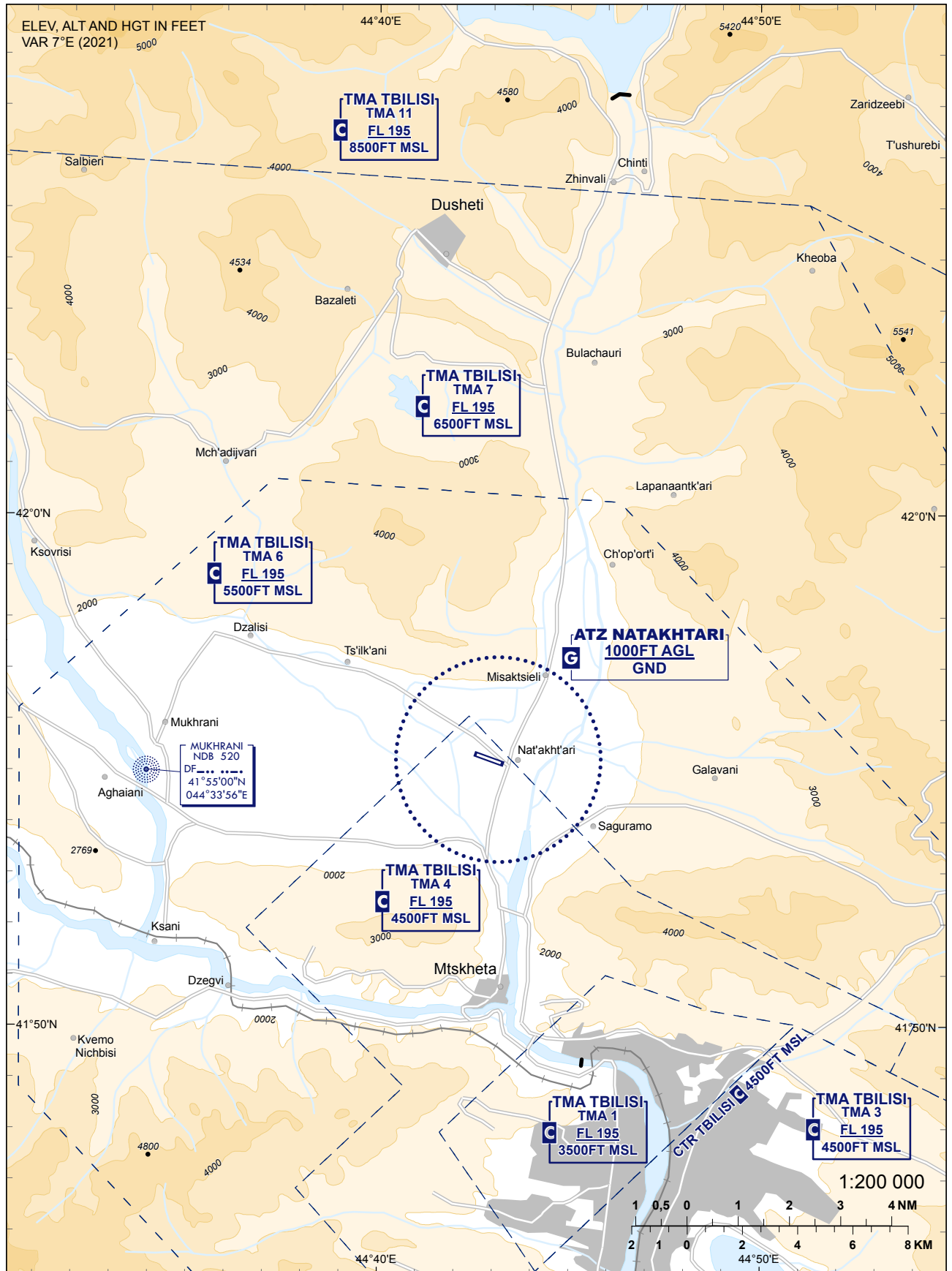
PAGE INTENTIONALLY LEFT BLANK

VISUAL APPROACH CHART - ICAO

NATAKHTARI (UGSA)

AERODROME ELEV. 1687'

NATAKHTARI 131.750



Changes: MAG VAR

PAGE INTENTIONALLY LEFT BLANK