

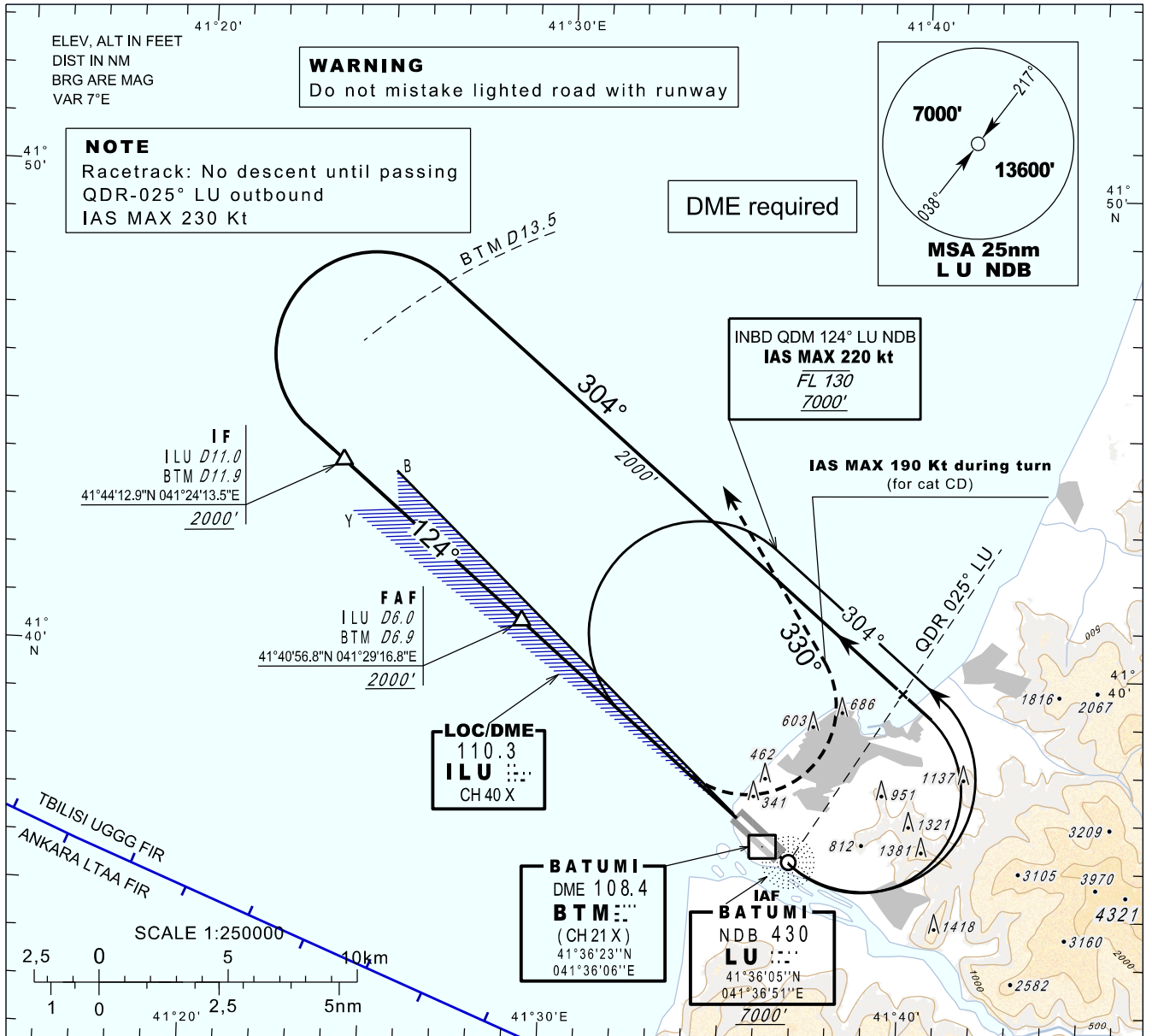
**INSTRUMENT  
APPROACH  
CHART - ICAO**

AERODROME ELEV 37'  
HEIGHTS RELATED TO  
THR RWY 12 - ELEV 17'

APP 124.425  
TWR 118.600

**BATUMI (UGSB)  
LOCy  
RWY 12**

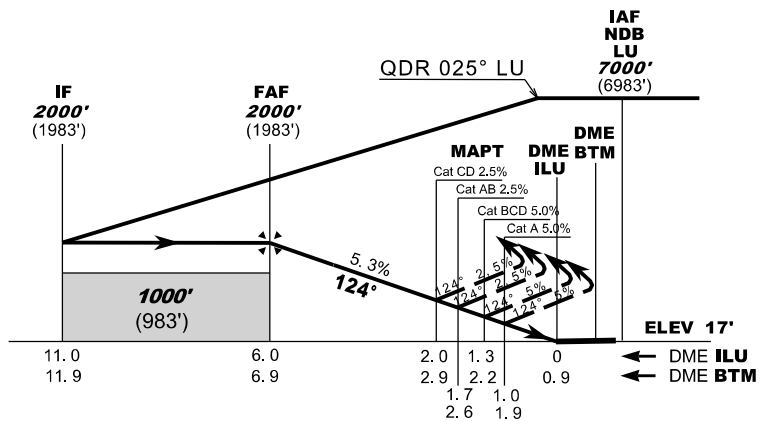
TRANSITION ALT 7000'



**MISSED APPROACH**  
Climb straight ahead. At **800'** turn left heading **330°** climbing to **3000'** and follow ATC instructions.  
IAS MAX 190 KT until turn is completed (for cat CD).

Timing is not authorised for defining the MAPT

Straight-in Approach				
Missed APCH climb gradient	OCA (H)			
	A	B	C	D
2.5%	630 (610)		750 (730)	
5.0%	400 (380)		500 (480)	



DME ILU NM	6	5	4	3	2	1
DME BTM NM	6.9	5.9	4.9	3.9	2.9	1.9
ALT (HGT) ft	2000 (1983)	1678 (1661)	1355 (1338)	1033 (1016)	711 (694)	389 (372)

Changes: MAG VAR, RWY designator, flight procedures