

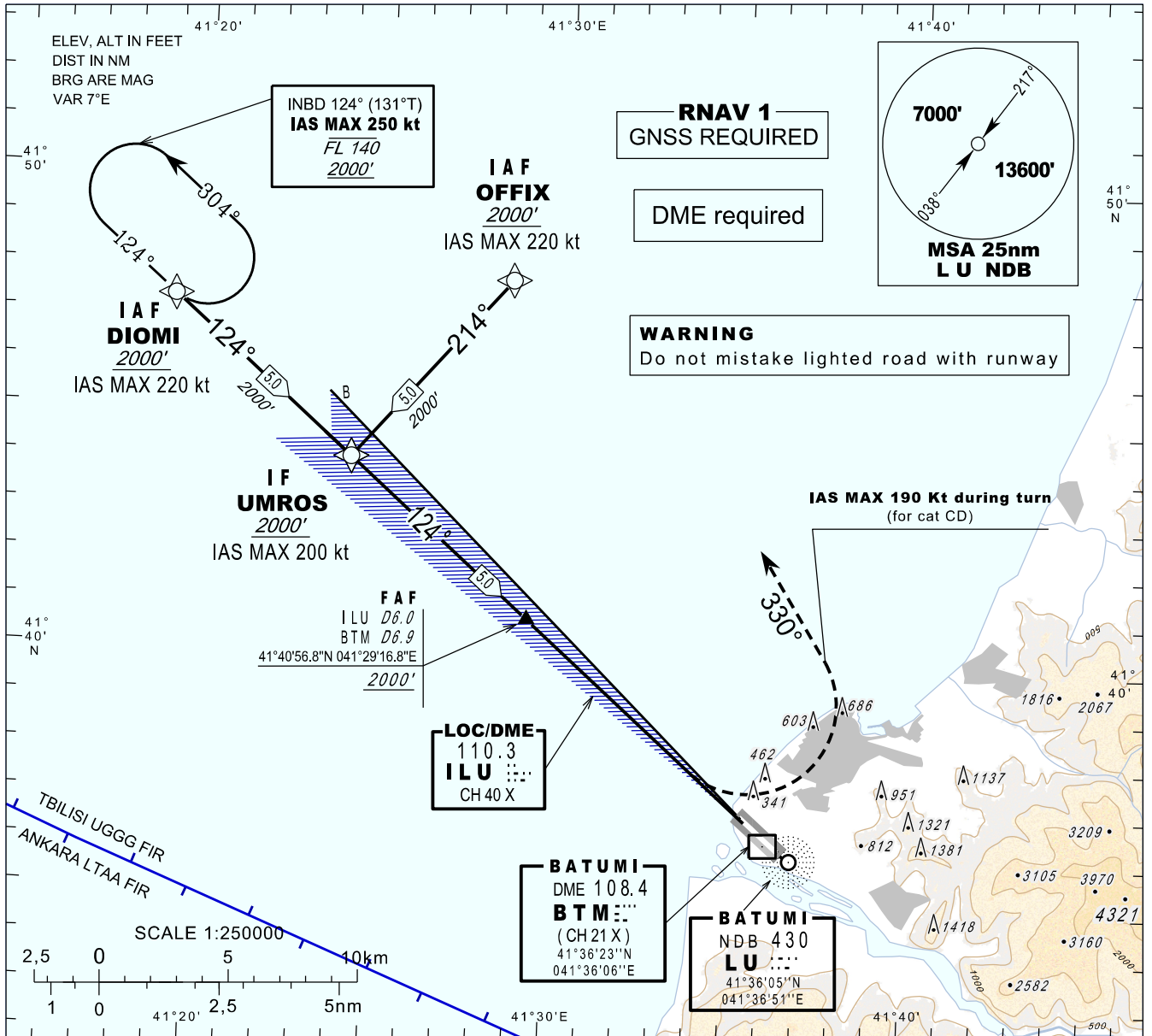
**INSTRUMENT
APPROACH
CHART - ICAO**

AERODROME ELEV 37'
HEIGHTS RELATED TO
THR RWY 12 - ELEV 17'

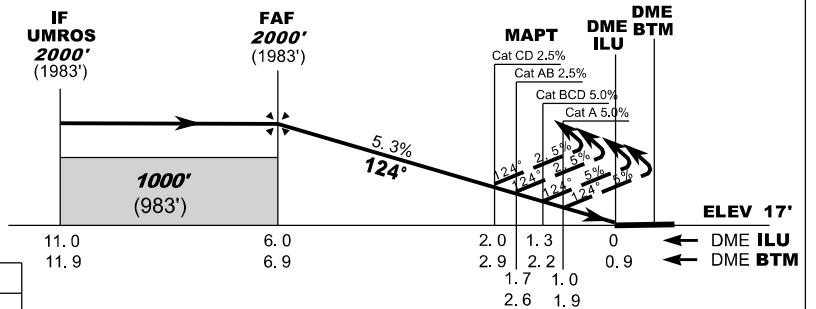
APP 124.425
TWR 118.600

**BATUMI (UGSB)
LOCz
RWY 12**

TRANSITION ALT 7000'



MISSED APPROACH
Climb straight ahead. At 800' turn left heading 330° climbing to 3000' and follow ATC instructions.
IAS MAX 190 KT until turn is completed (for cat CD).



Straight-in Approach				
Missed APCH climb gradient	OCA (H)			
	A	B	C	D
2.5%	630 (610)		750 (730)	
5.0%	400 (380)		500 (480)	

Timing is not authorised for defining the MAPT

DME ILU NM	6	5	4	3	2	1
DME BTM NM	6.9	5.9	4.9	3.9	2.9	1.9
ALT (HGT) ft	2000 (1983)	1678 (1661)	1355 (1338)	1033 (1016)	711 (694)	389 (372)

Changes: MAG VAR, RWY designator, flight procedures