

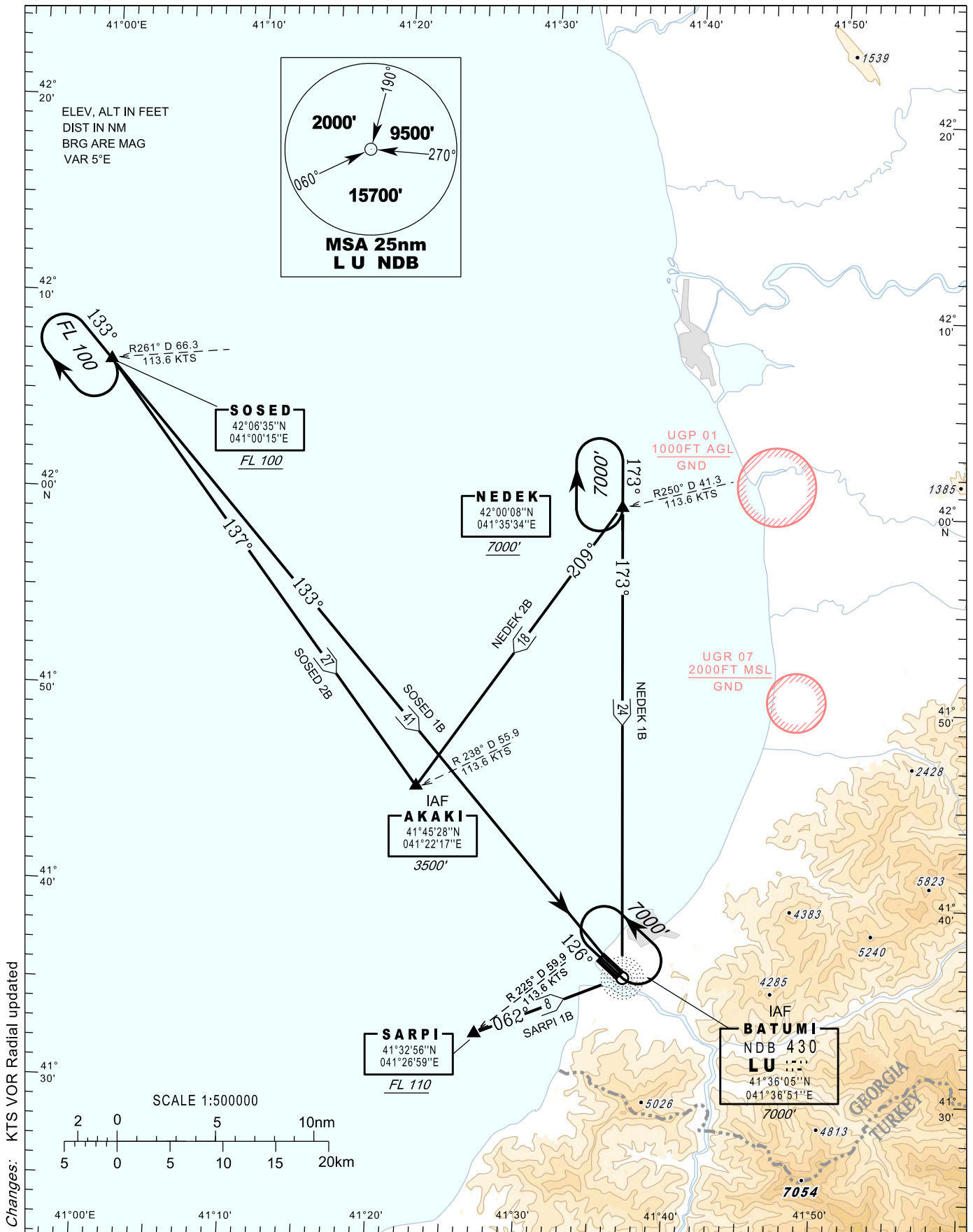
**STANDARD ARRIVAL CHART-  
INSTRUMENT (STAR) - ICAO**

**BATUMI (UGSB)  
RWY 13**

TRANSITION LEVEL FL 090  
TRANSITION ALTITUDE 7000'

APP 124.425  
TWR 118.600

SOSED 1B, SOSED 2B, SARPI 1B  
NEDEK 1B, NEDEK 2B



Changes: KTS VOR Radial updated