

AERODROME CHART - ICAO

42° 10' 37" N
042° 28' 58" E

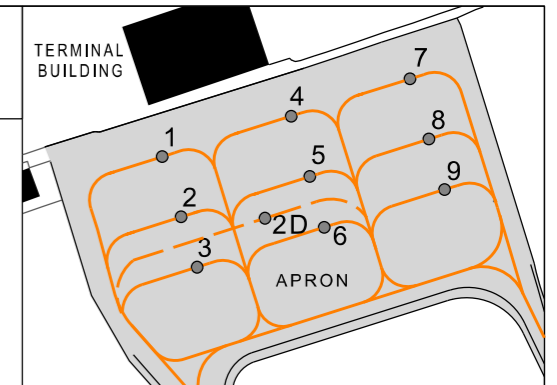
ELEV 160'

TWR 125.500

KUTAISI/Kopitnari (UGKO)

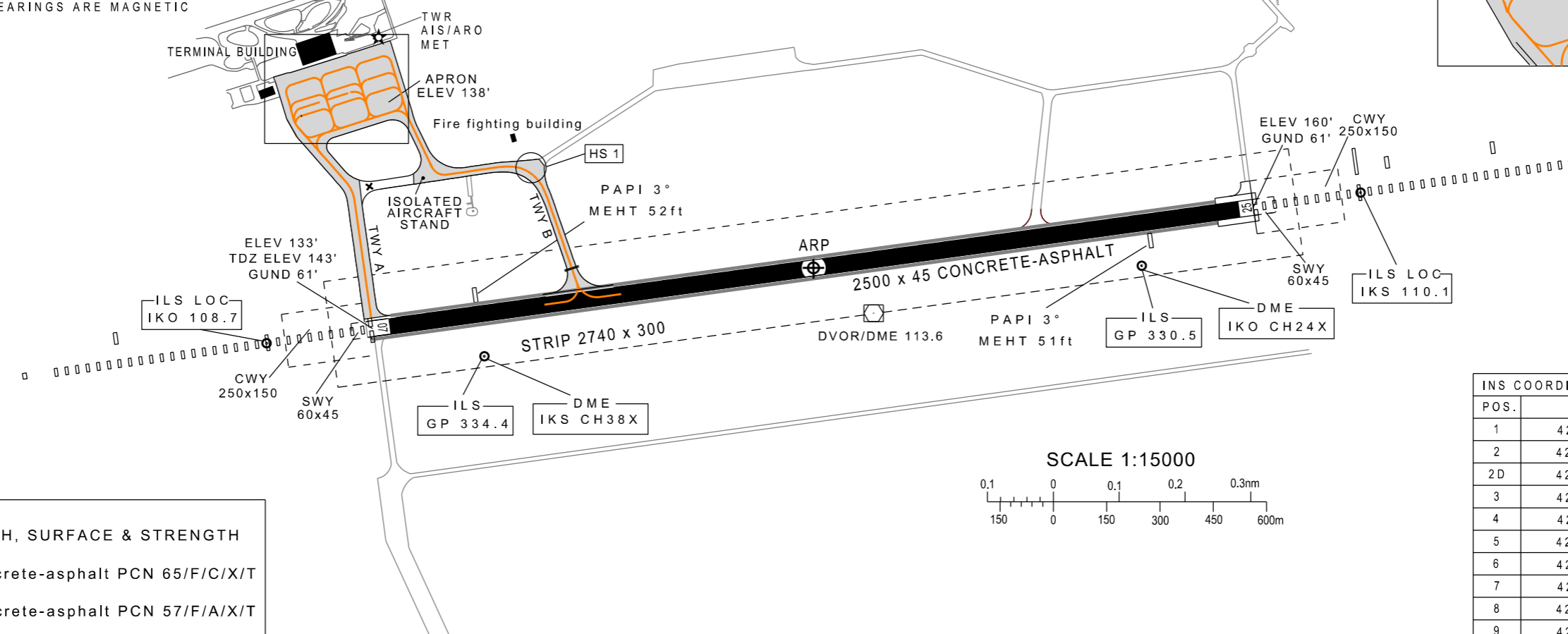
RWY	DIRECTION	THR	BEARING STRENGTH
07	073°	42°10'30"N 042°28'04"E	PCN 55/F/C/X/T
25	253°	42°10'43"N 042°29'51"E	
APRON			PCN 65/F/C/X/T

CAUTION
HS 1: Airport Vehicles and RFFS trucks on close vicinity

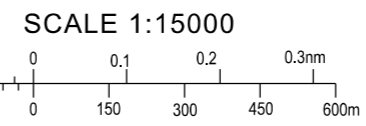


ELEVATIONS ARE IN FEET, DISTANCES ARE IN METRES
AND BEARINGS ARE MAGNETIC

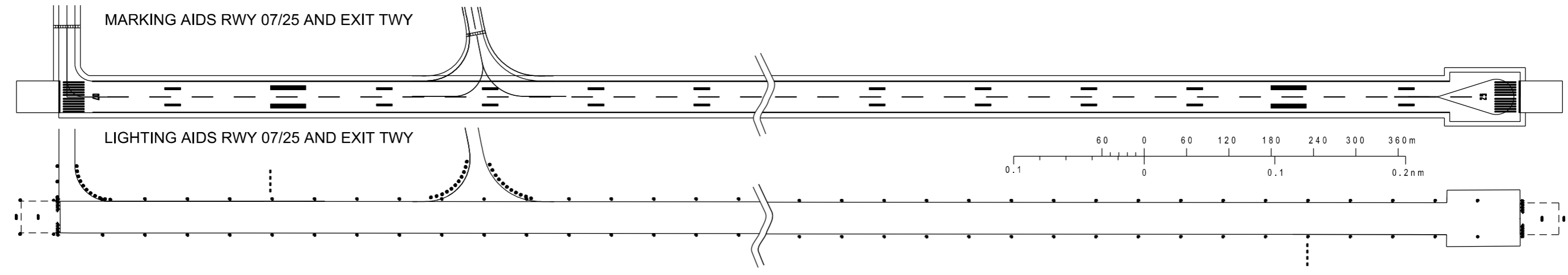
VAR 7° E. 2021



POS.	COORDINATES
1	42°10'52.23"N 042°27'54.89"E
2	42°10'50.70"N 042°27'55.60"E
2D	42°10'50.70"N 042°27'58.33"E
3	42°10'49.42"N 042°27'56.20"E
4	42°10'53.34"N 042°27'59.18"E
5	42°10'51.82"N 042°27'59.93"E
6	42°10'50.53"N 042°28'00.49"E
7	42°10'54.44"N 042°28'03.42"E
8	42°10'52.89"N 042°28'04.09"E
9	42°10'51.61"N 042°28'04.68"E



TAXIWAYS WIDTH, SURFACE & STRENGTH
 TWY A: 23 M Concrete-asphalt PCN 65/F/C/X/T
 TWY B: 18 M Concrete-asphalt PCN 57/F/A/X/T



Changes: RWY PCN and lighting, PAPI MEHT updated