

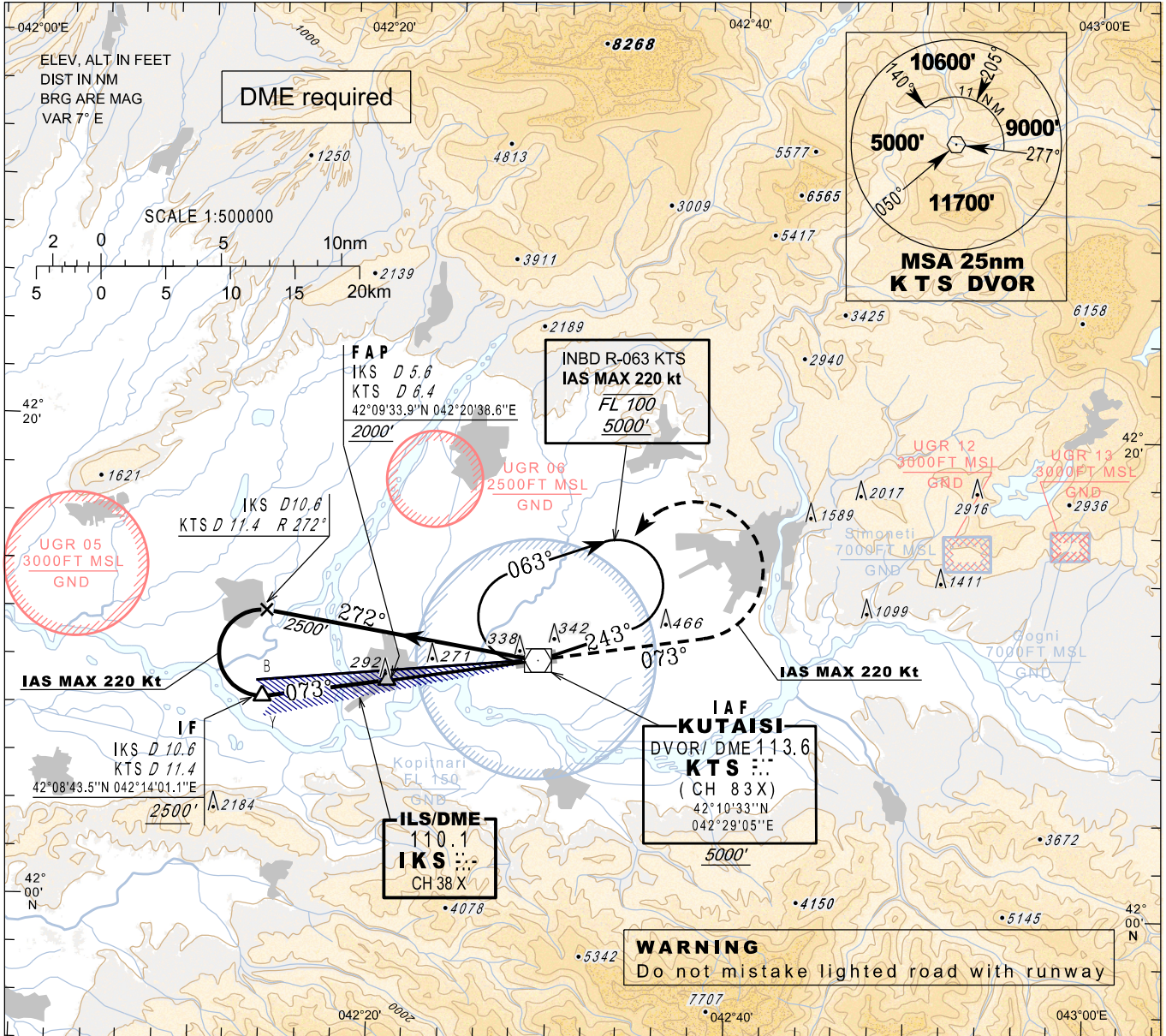
**INSTRUMENT  
APPROACH  
CHART - ICAO**

**KUTAISI/Kopitnari (UGKO)  
ILS  
RWY 07**

AERODROME ELEV 160'  
HEIGHTS RELATED TO  
THR RWY 07 - ELEV 133'

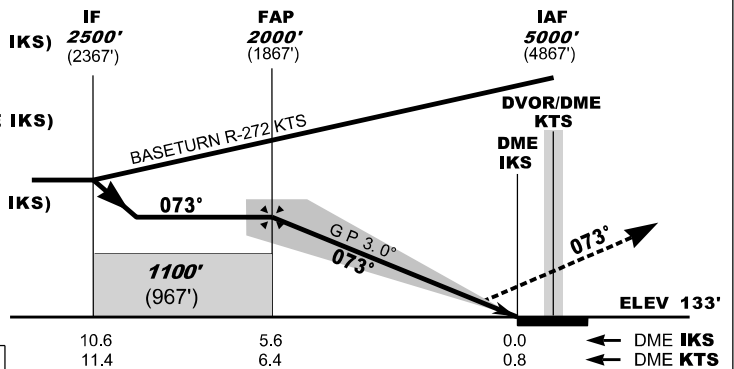
APP 127.100  
TWR 125.500

TRANSITION ALT 7000'



**MISSED APPROACH**

- Normal:** Climb straight ahead to 3500', at 7 NM DME KTS (7.4 NM DME IKS) turn left inbound KTS and follow ATC instructions. IAS MAX 220kt
- KTS DVOR Unserviceable:** Climb straight ahead to 3500', at 7 NM DME KTS (7.4 NM DME IKS) turn left heading 255°, expect vectoring. IAS MAX 220kt
- Radio Communication Failure:** Climb straight ahead to 5000', at 7 NM DME KTS (7.4 NM DME IKS) turn left inbound KTS, hold as published, when ready make new approach (ILS y or LOC y or VOR). IAS MAX 220kt



Changes: Flight procedures

Straight-in Approach	A	B	C	D
<b>OCA(H)</b>	<b>311 (178)</b>	<b>321 (188)</b>	<b>331 (198)</b>	<b>341 (208)</b>
DME IKS NM			5	4
DME KTS NM			5.8	4.8
ALT (HGT) ft			<b>1798 (1665)</b>	<b>1472 (1339)</b>

	10.6	5.6			
	11.4	6.4			
			3	2	1
			3.8	2.8	1.8
			<b>1147 (1014)</b>	<b>824 (691)</b>	<b>503 (370)</b>

ILS RDH 51'