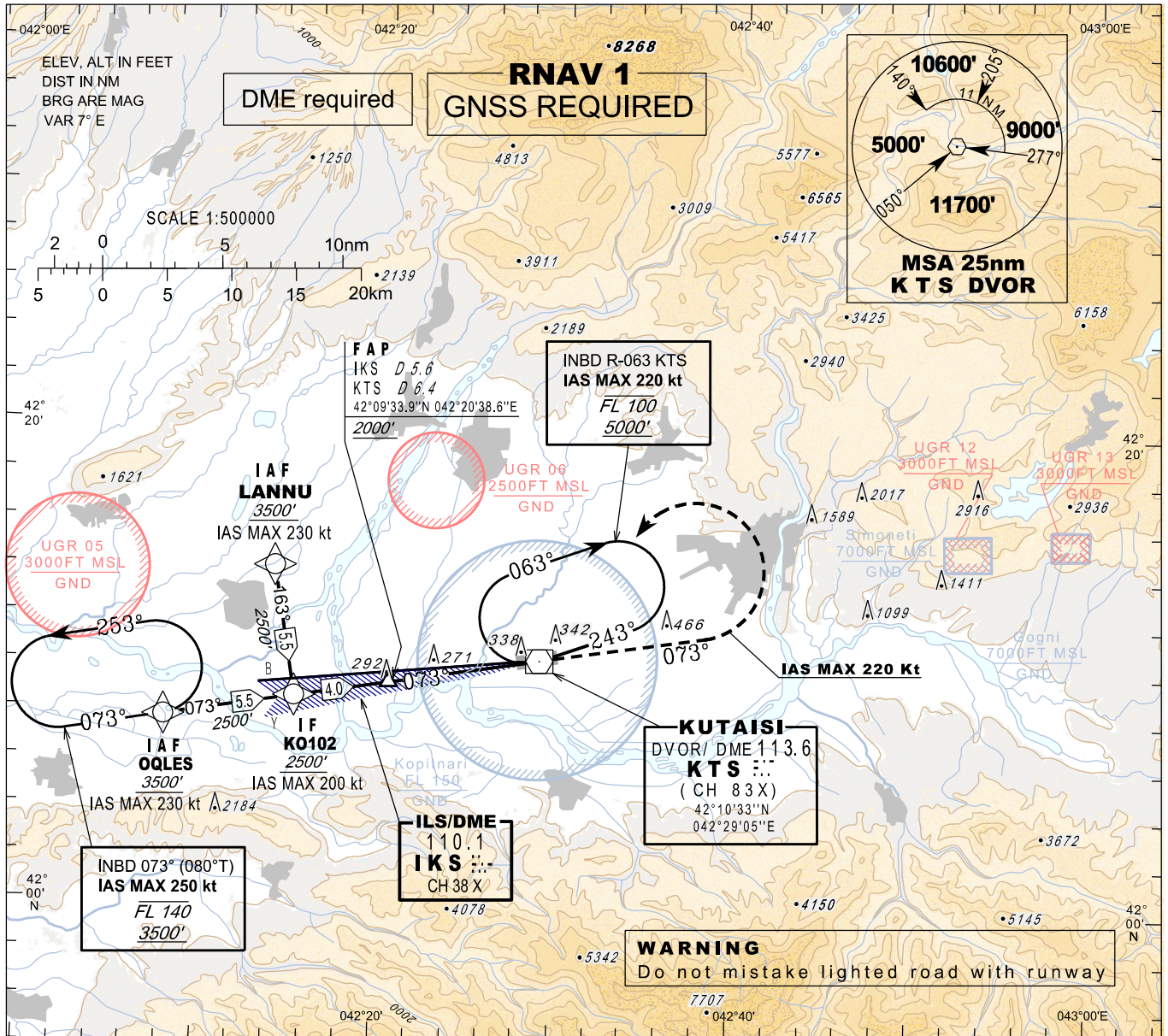


**INSTRUMENT
APPROACH
CHART - ICAO**

AERODROME ELEV 160'
HEIGHTS RELATED TO
THR RWY 07 - ELEV 133'
TRANSITION ALT 7000'

APP 127.100
TWR 125.500

**KUTAISI/Kopitnari (UGKO)
ILSz
RWY 07**

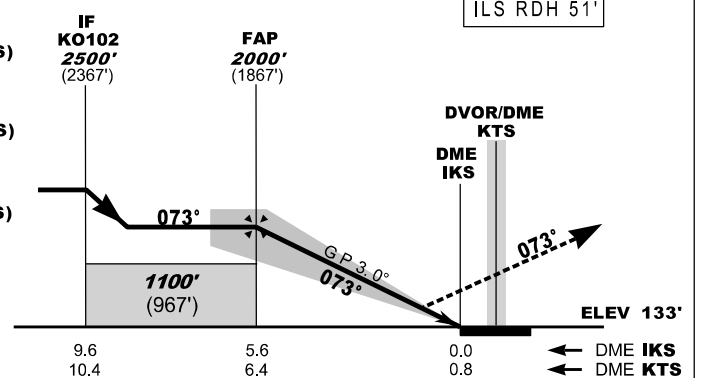


MISSED APPROACH

Normal:
Climb straight ahead to 3500', at 7 NM DME KTS (7.4 NM DME IKS) turn left inbound **KTS** and follow **ATC** instructions.
IAS MAX 220kt

KTS DVOR Unserviceable:
Climb straight ahead to 3500', at 7 NM DME KTS (7.4 NM DME IKS) turn left heading 255°, expect vectoring.
IAS MAX 220kt

Radio Communication Failure:
Climb straight ahead to 5000', at 7 NM DME KTS (7.4 NM DME IKS) turn left inbound **KTS**, hold as published, when ready make new approach (ILS y or LOC y or VOR).
IAS MAX 220kt



Straight-in Approach	A	B	C	D
OCA(H)	311 (178)	321 (188)	331 (198)	341 (208)
DME IKS NM			5	4
DME KTS NM			5.8	4.8
ALT (HGT) ft			1798 (1665)	1472 (1339)

	9.6	5.6	0.0	
	10.4	6.4	0.8	
				← DME IKS
				← DME KTS

Changes: Flight procedures