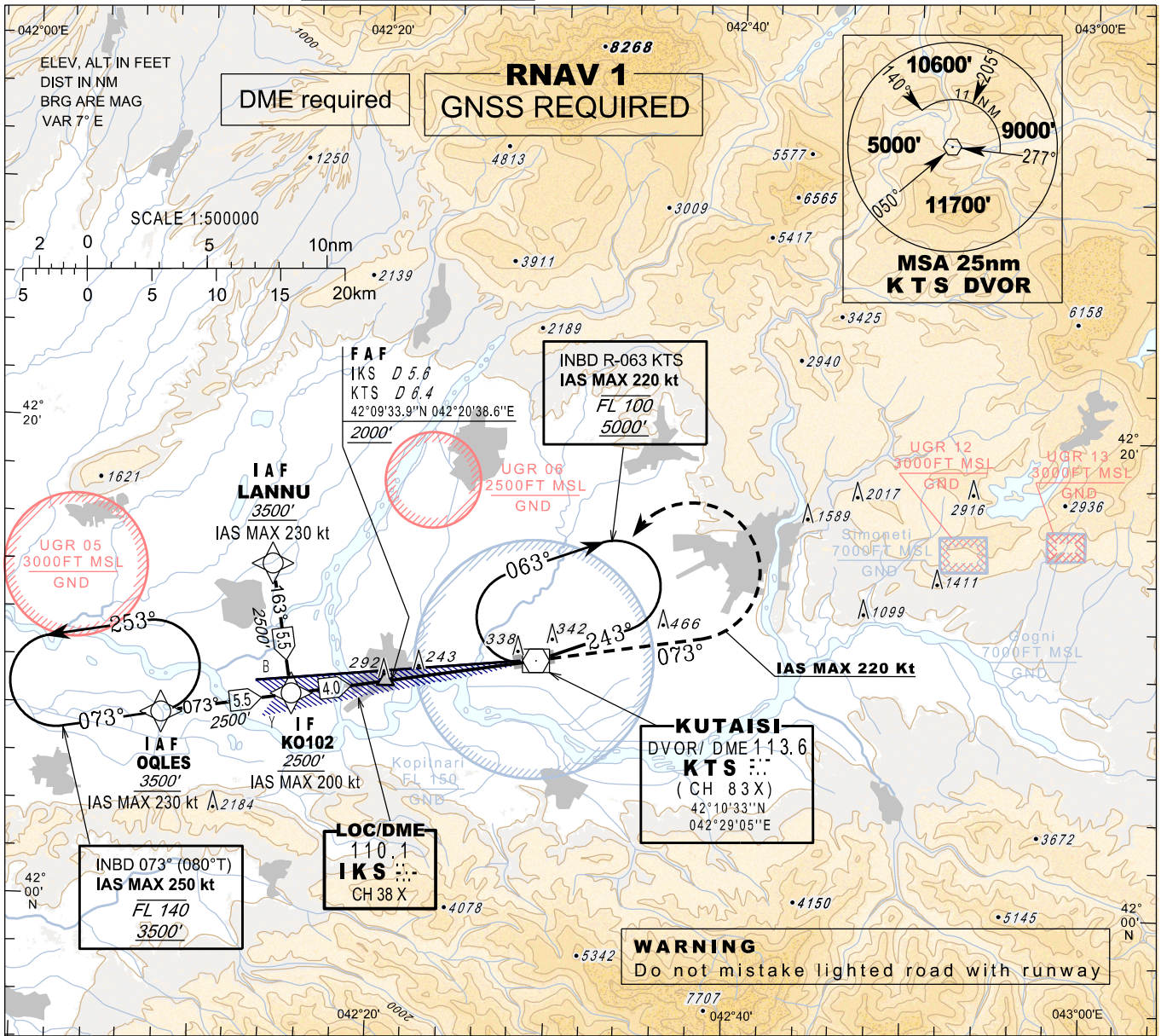


**INSTRUMENT
APPROACH
CHART - ICAO**

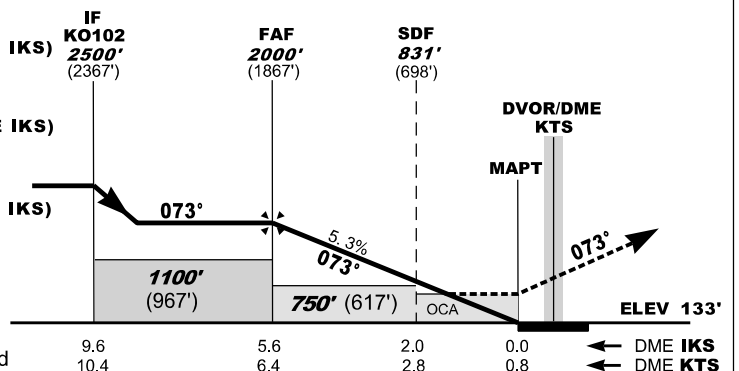
AERODROME ELEV 160'
HEIGHTS RELATED TO
THR RWY 07 - ELEV 133'
TRANSITION ALT 7000'

APP 127.100
TWR 125.500

**KUTAISI/Kopitnari (UGKO)
LOCz
RWY 07**



MISSED APPROACH
Normal:
 Climb straight ahead to 3500', at 7 NM DME KTS (7.4 NM DME IKS) turn left inbound **KTS** and follow **ATC** instructions.
 IAS MAX 220kt
KTS DVOR Unserviceable:
 Climb straight ahead to 3500', at 7 NM DME KTS (7.4 NM DME IKS) turn left heading **255°**, expect vectoring.
 IAS MAX 220kt
Radio Communication Failure:
 Climb straight ahead to 5000', at 7 NM DME KTS (7.4 NM DME IKS) turn left inbound **KTS**, hold as published, when ready make new approach (ILS y or LOC y or VOR).
 IAS MAX 220kt



Straight-in Approach	A	B	C	D	Timing is not authorised for defining the MAPT
	OCA(H) 480 (340)				
DME IKS NM	5	4	3	2	1
DME KTS NM	5.8	4.8	3.8	2.8	1.8
ALT (HGT) ft	1805 (1672)	1481 (1348)	1156 (1023)	831 (698)	507 (374)

Changes: Flight procedures