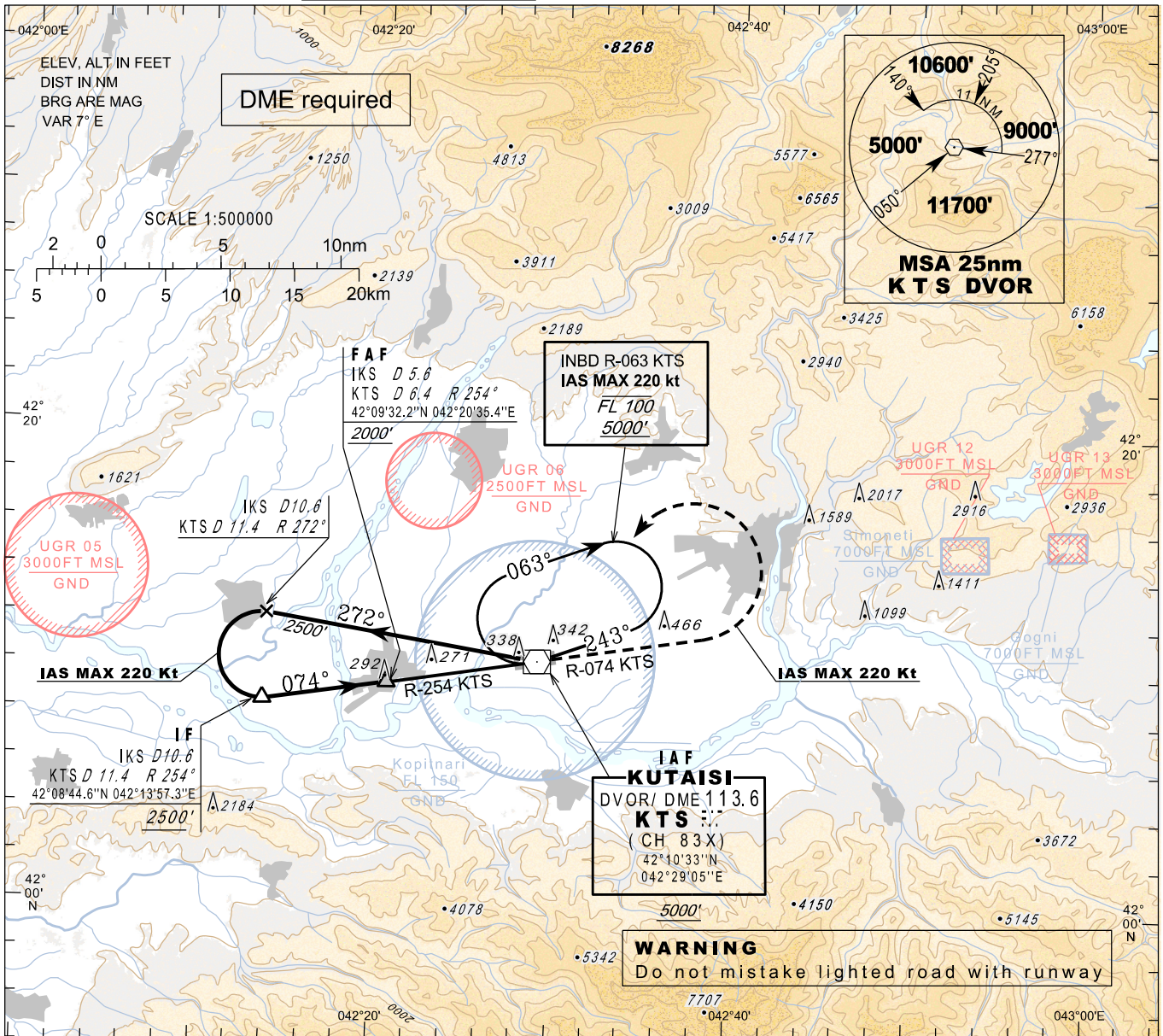


**INSTRUMENT  
APPROACH  
CHART - ICAO**

AERODROME ELEV 160'  
HEIGHTS RELATED TO  
THR RWY 07 - ELEV 133'  
TRANSITION ALT 7000'

APP 127.100  
TWR 125.500

**KUTAISI/Kopitnari (UGKO)  
VOR  
RWY 07**

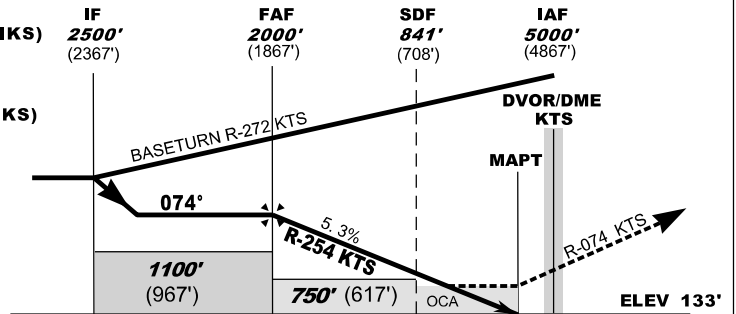


**WARNING**  
Do not mistake lighted road with runway

**MISSED APPROACH**

**Normal:**  
Climb 3500' on R-074 KTS, at 7 NM DME KTS (7.4 NM DME IKS) turn left inbound KTS and follow ATC instructions. IAS MAX 220kt

**Radio Communication Failure:**  
Climb 5000' on R-074 KTS, at 7 NM DME KTS (7.4 NM DME IKS) turn left inbound KTS, hold as published, when ready make new approach. IAS MAX 220kt



Straight-in Approach	A	B	C	D
<b>OCA(H)</b>	<b>590 (460)</b>			

Timing is not authorised for defining the MAPT

DME KTS NM	6	5	4	3	2	1
DME IKS NM	5.2	4.2	3.2	2.2	1.2	0.2
ALT (HGT) ft	<b>1871</b> (1738)	<b>1549</b> (1416)	<b>1227</b> (1094)	<b>905</b> (772)	<b>583</b> (450)	<b>261</b> (128)

Changes: Flight procedures