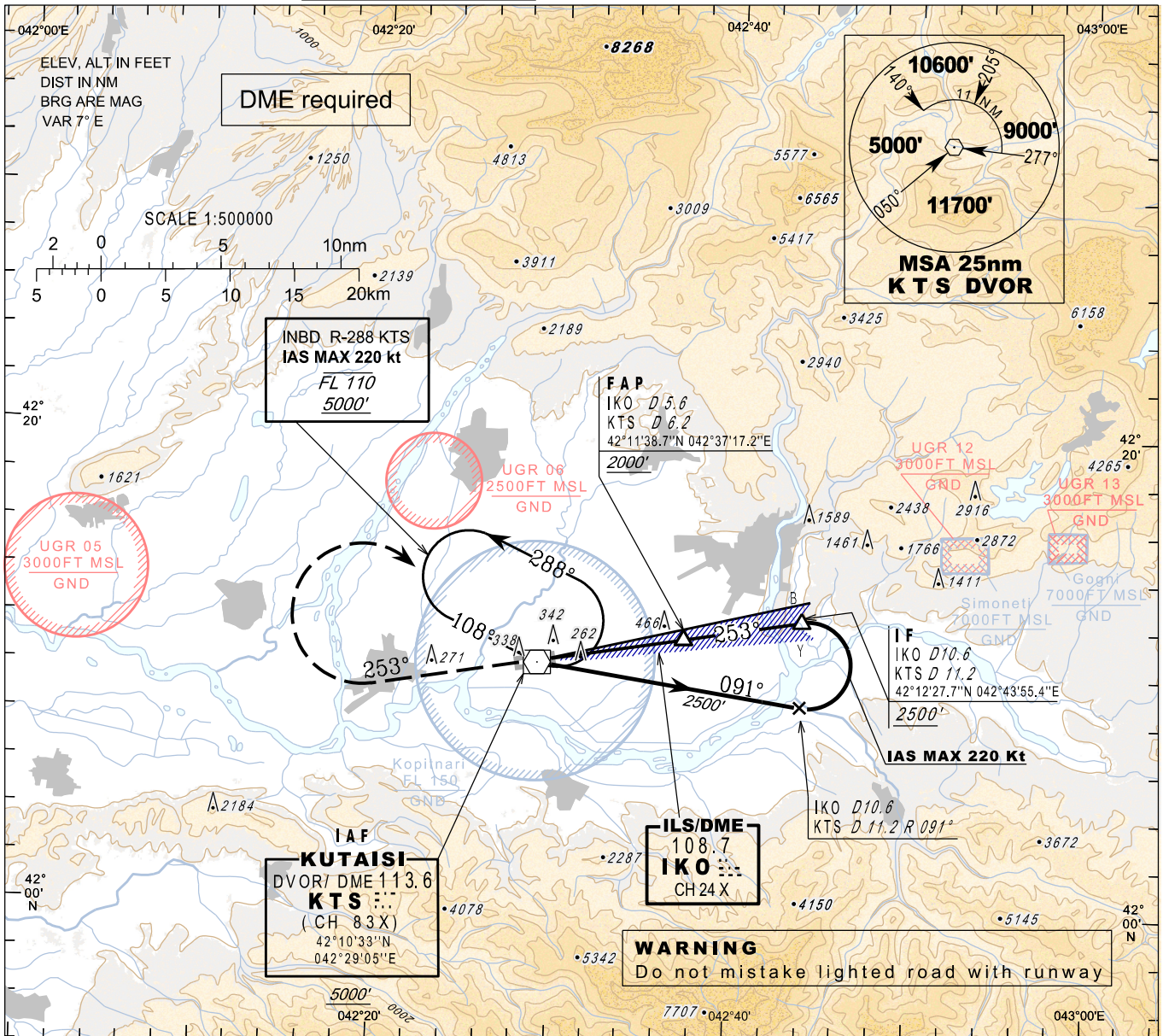


**INSTRUMENT  
APPROACH  
CHART - ICAO**

AERODROME ELEV 160'  
HEIGHTS RELATED TO  
THR RWY 25 - ELEV 160'  
TRANSITION ALT 7000'

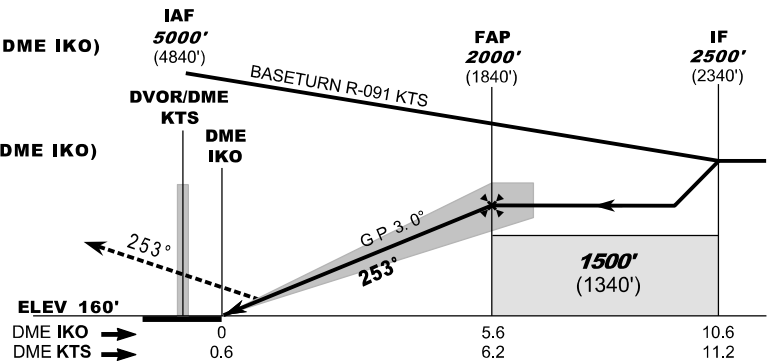
APP 127.100  
TWR 125.500

**KUTAISI/Kopitnari (UGKO)  
ILSy  
RWY 25**



**MISSED APPROACH**

**Normal:**  
Climb straight ahead to 3500', at 7 NM DME KTS (7.2 NM DME IKO) turn right inbound **KTS** and follow **ATC** instructions.  
**KTS DVOR Unserviceable:**  
Climb straight ahead to 4500', expect vectoring.  
**Radio Communication Failure:**  
Climb straight ahead to 5000', at 7 NM DME KTS (7.2 NM DME IKO) turn right inbound **KTS**, hold as published, when ready make new approach (ILSy or LOCy or VOR).



Straight-in Approach	A	B	C	D
<b>OCA(H)</b>	<b>330 (170)</b>	<b>340 (180)</b>	<b>350 (190)</b>	<b>360 (200)</b>
DME IKO NM		5	4	3
DME KTS NM		5.6	4.6	3.6
ALT (HGT) ft		<b>1825 (1665)</b>	<b>1499 (1339)</b>	<b>1174 (1014)</b>

ILS RDH 51'

Changes: Flight procedures