

**INSTRUMENT  
APPROACH  
CHART - ICAO**

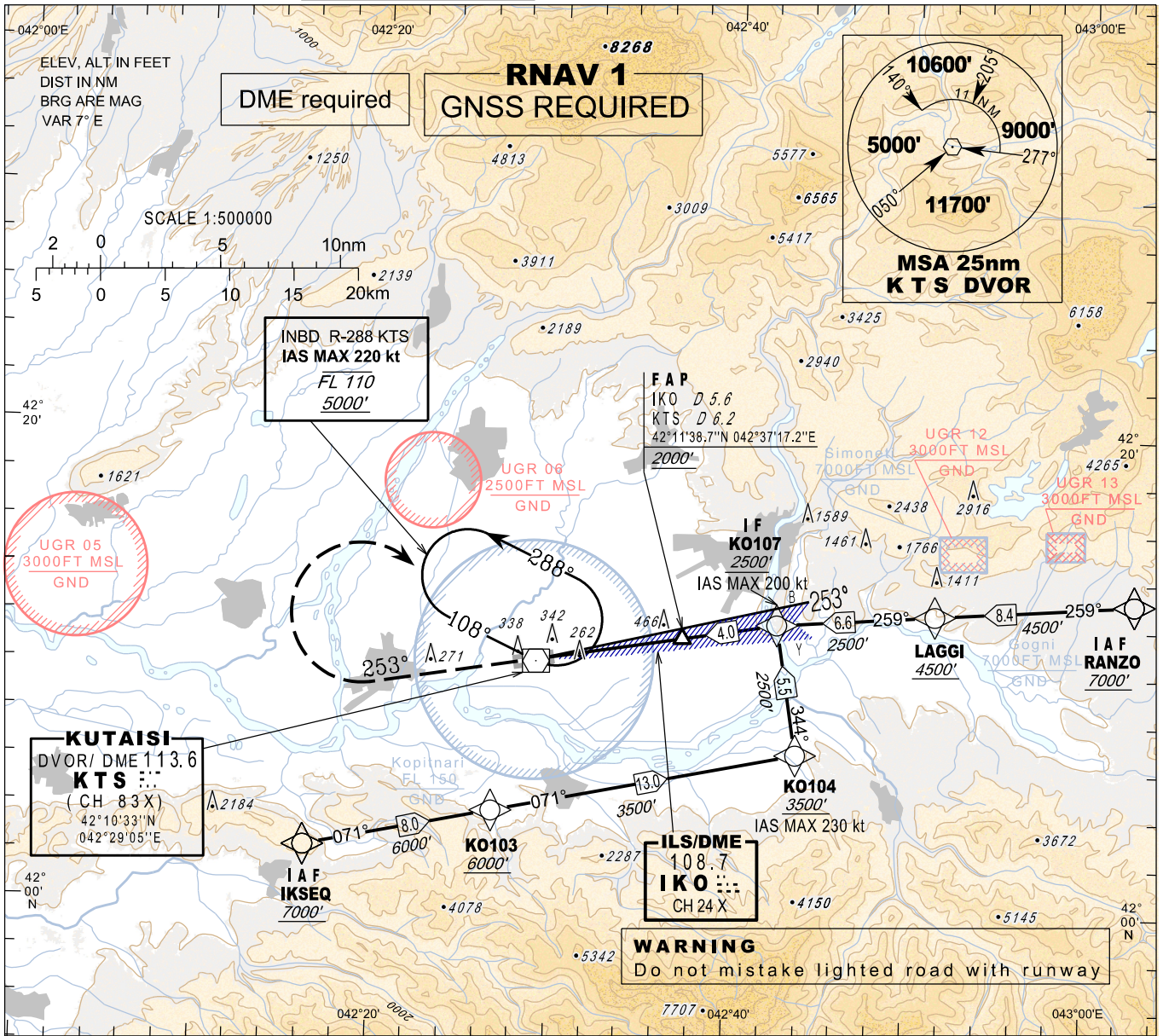
**KUTAISI/Kopitnari (UGKO)**

**ILS  
RWY 25**

AERODROME ELEV 160'  
HEIGHTS RELATED TO  
THR RWY 25 - ELEV 160'

APP 127.100  
TWR 125.500

TRANSITION ALT 7000'



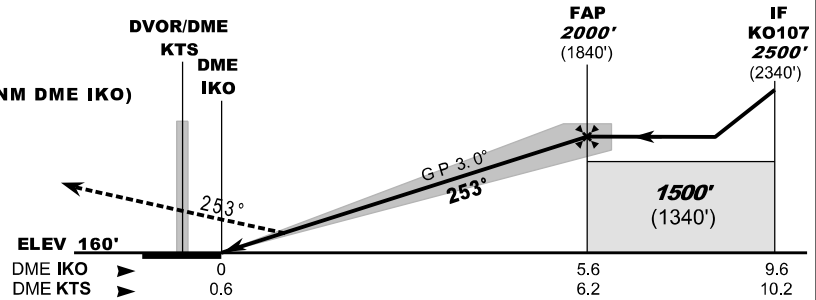
**MISSED APPROACH**

**Normal:**  
Climb straight ahead to 3500', at 7 NM DME KTS (7.2 NM DME IKO)  
turn right inbound **KTS** and follow **ATC** instructions.

**KTS DVOR Unserviceable:**  
Climb straight ahead to 4500', expect vectoring.

**Radio Communication Failure:**  
Climb straight ahead to 5000', at 7 NM DME KTS (7.2 NM DME IKO)  
turn right inbound **KTS**, hold as published, when ready  
make new approach (ILS or LOC or VOR).

ILS RDH 51'



Changes: Flight procedures

Straight-in Approach	A	B	C	D
<b>OCA(H)</b>	<b>330 (170)</b>	<b>340 (180)</b>	<b>350 (190)</b>	<b>360 (200)</b>
DME IKO NM		5	4	3
DME KTS NM		5.6	4.6	3.6
ALT (HGT) ft		<b>1825 (1665)</b>	<b>1499 (1339)</b>	<b>1174 (1014)</b>
			<b>851 (691)</b>	<b>530 (370)</b>