

**INSTRUMENT
APPROACH
CHART - ICAO**

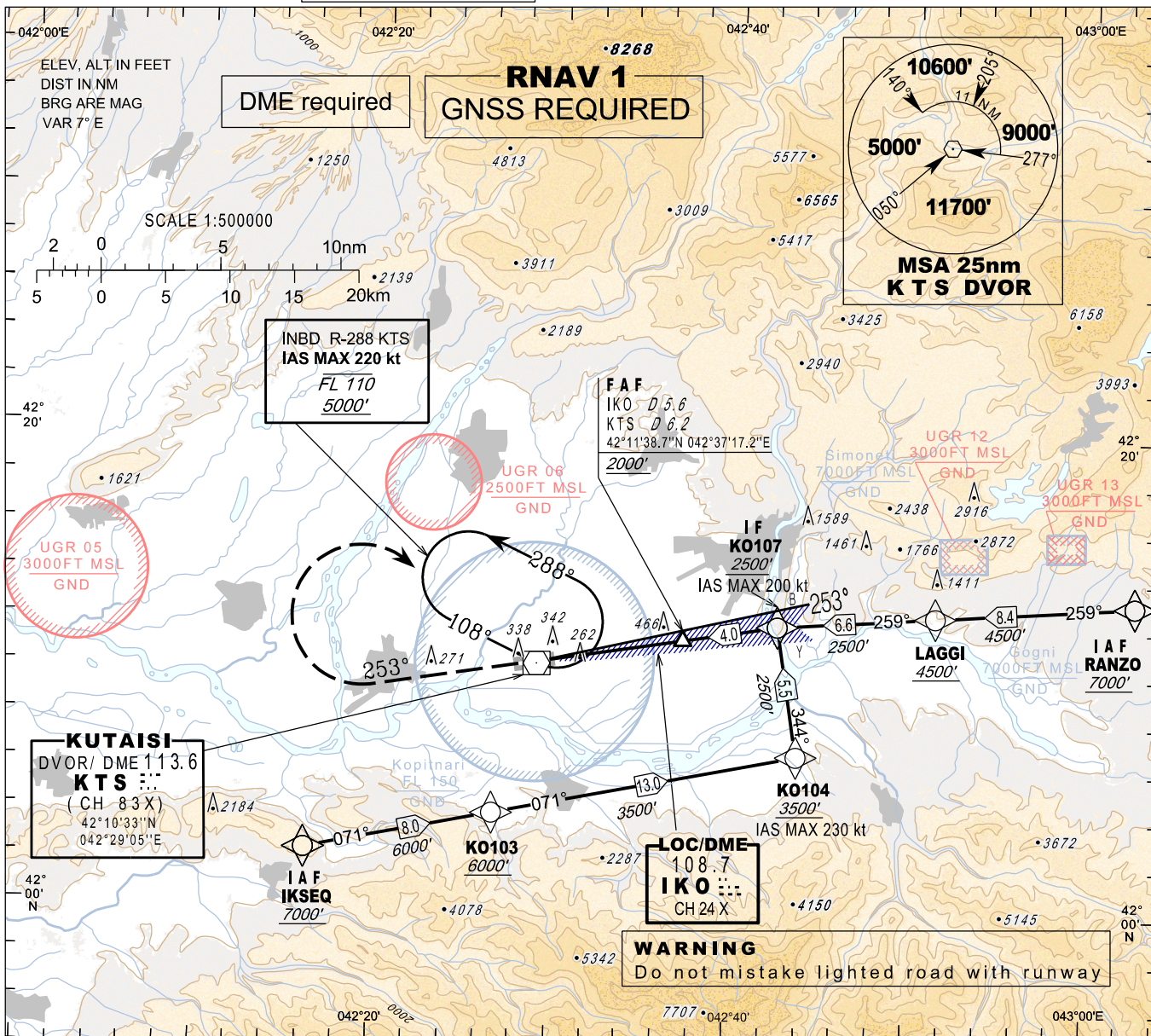
AERODROME ELEV 160'
HEIGHTS RELATED TO
THR RWY 25 - ELEV 160'

APP 127.100
TWR 125.500

KUTAI SI/Kopitnari (UGKO)

**LOCz
RWY 25**

TRANSITION ALT 7000'



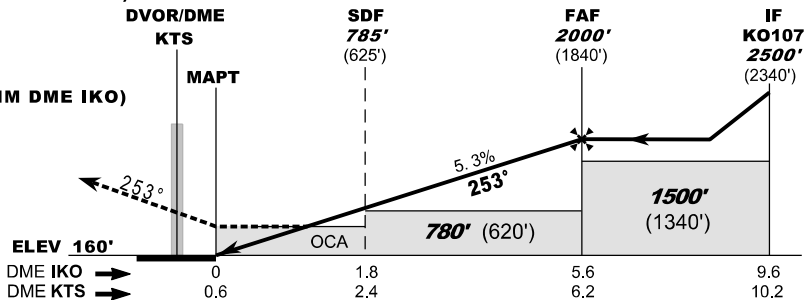
MISSED APPROACH

Normal:
Climb straight ahead to 3500', at 7 NM DME KTS (7.2 NM DME IKO)
turn right inbound KTS and follow ATC instructions.

KTS DVOR Unserviceable:
Climb straight ahead to 4500', expect vectoring.

Radio Communication Failure:
Climb straight ahead to 5000', at 7 NM DME KTS (7.2 NM DME IKO)
turn right inbound KTS, hold as published, when ready
make new approach (ILS y or LOC y or VOR).

Timing is not authorised
for defining the MAPT



Straight-in Approach	A	B	C	D
OCA(H)	510 (350)			

DME IKO NM	5	4	3	2	1
DME KTS NM	5.6	4.6	3.6	2.6	1.6
ALT (HGT) ft	1808 (1648)	1488 (1328)	1169 (1009)	849 (689)	529 (369)

Changes: Flight procedures