

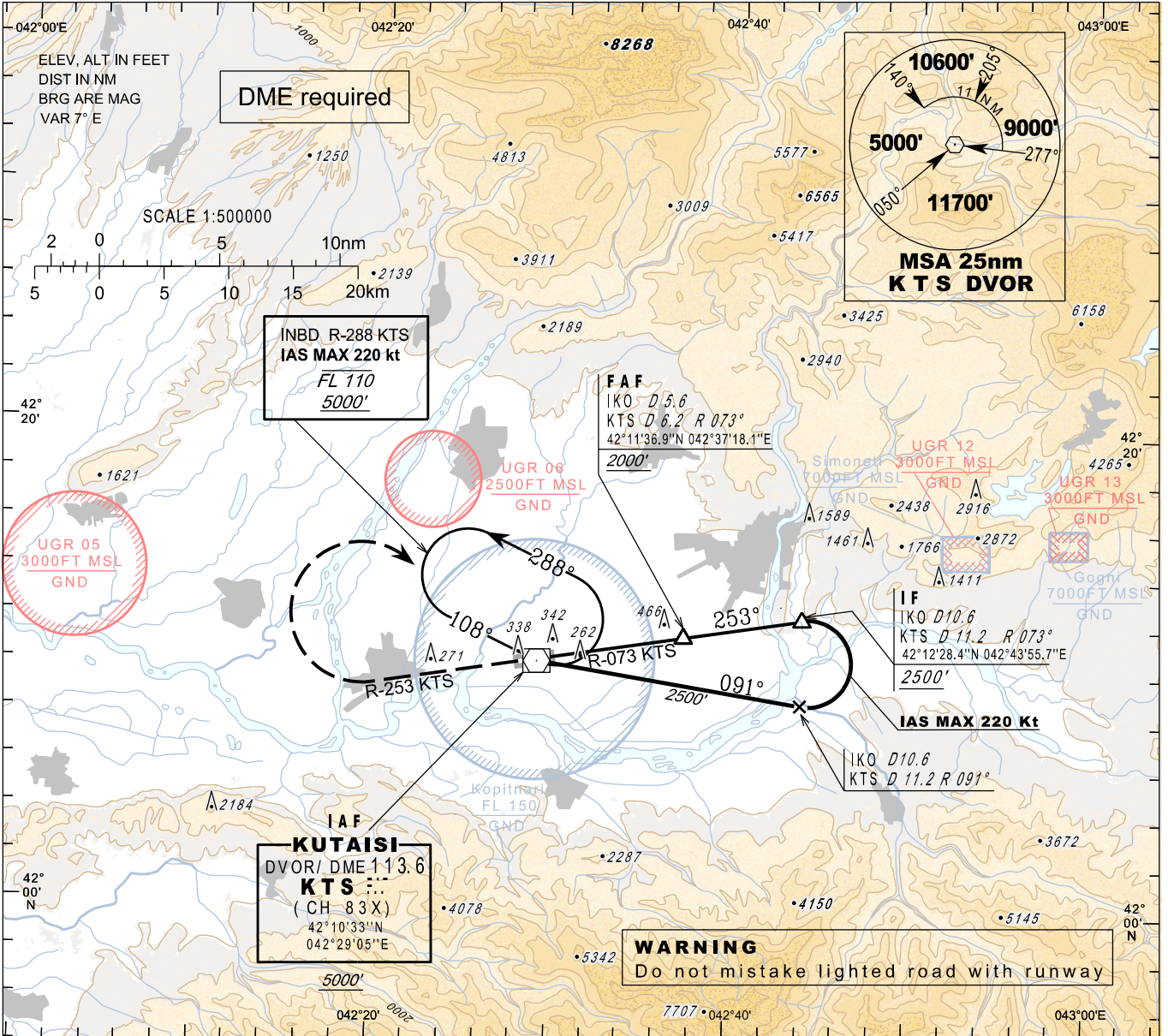
**INSTRUMENT
APPROACH
CHART - ICAO**

AERODROME ELEV 160'
HEIGHTS RELATED TO
THR RWY 25 - ELEV 160'

APP 127.100
TWR 125.500

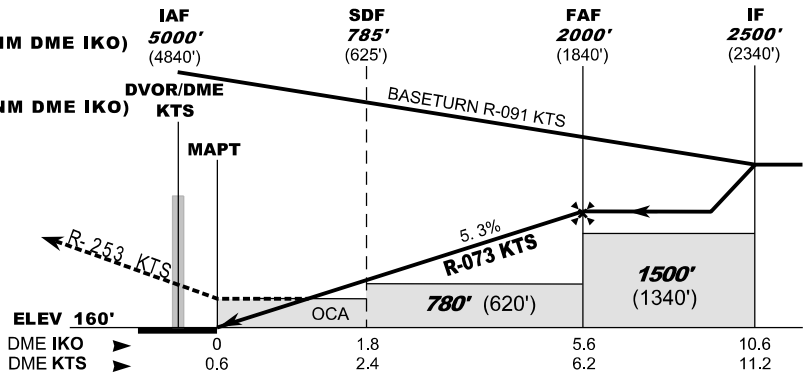
**KUTAISI/Kopitnari (UGKO)
VOR
RWY 25**

TRANSITION ALT 7000'



MISSED APPROACH
Normal:
Climb 3500' on R-253 KTS, at 7 NM DME KTS (7.2 NM DME IKO) turn right inbound KTS and follow ATC instructions.
Radio Communication Failure:
Climb 5000' on R-253 KTS, at 7 NM DME KTS (7.2 NM DME IKO) turn right inbound KTS, hold as published, when ready make new approach.

Timing is not authorised for defining the MAPT



Straight-in Approach	A	B	C	D
OCA(H)	510 (350)			

DME KTS NM	6	5	4	3	2	1
DME IKO NM	5.4	4.4	3.4	2.4	1.4	0.4
ALT (HGT) ft	1936 (1776)	1617 (1457)	1297 (1137)	978 (818)	658 (498)	339 (179)

Changes: Flight procedures