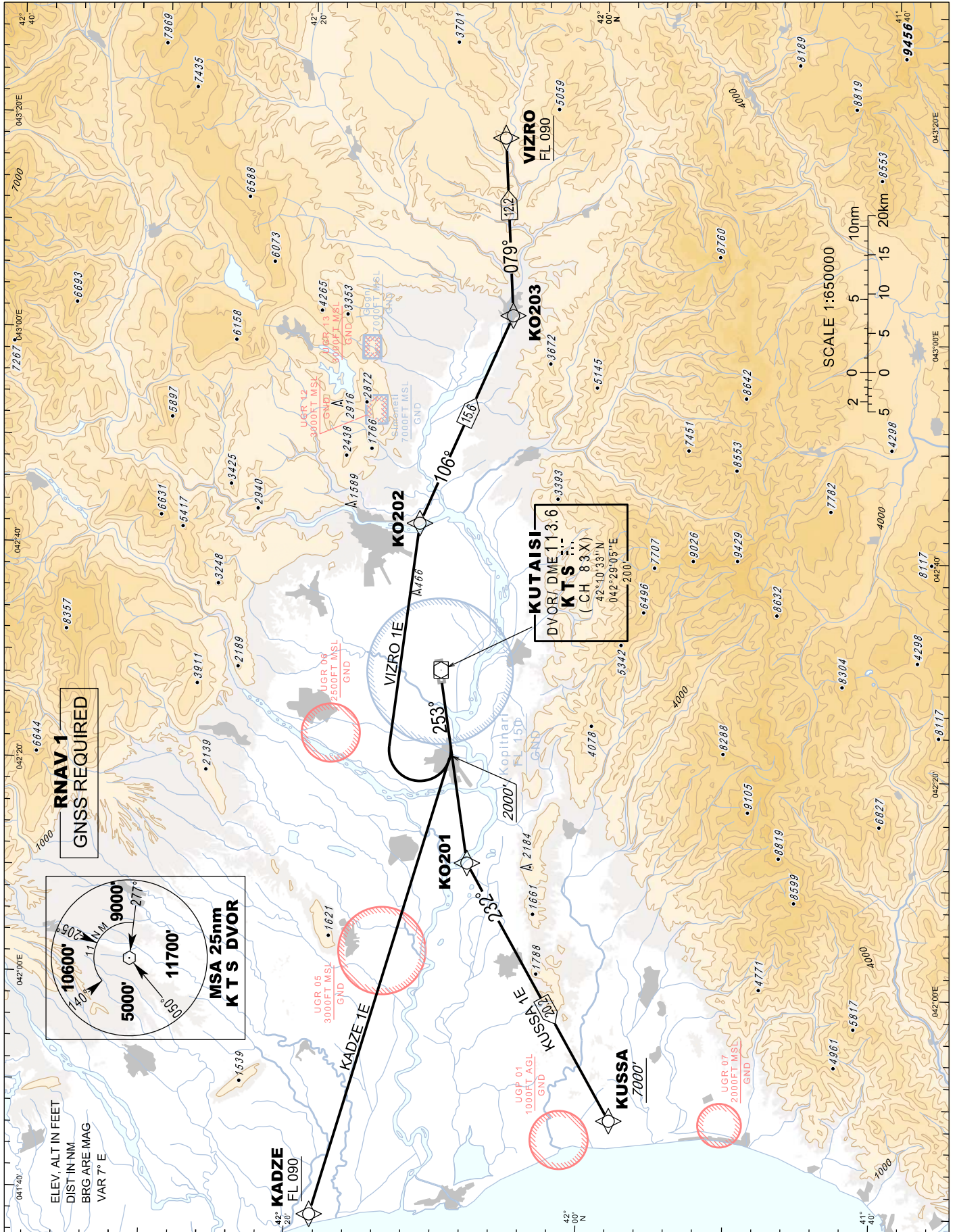


**STANDARD DEPARTURE CHART-
INSTRUMENT (SID) - ICAO**

TRANSITION ALTITUDE
7000'

APP 127.100
TWR 125.500

**KUTAISI/Kopitnari (UGKO)
RNAV RWY 25**
KADZE 1E VIZRO 1E
KUSSA 1E



Changes: Added elevation of DME antenna

**RNAV 1
GNSS REQUIRED**

