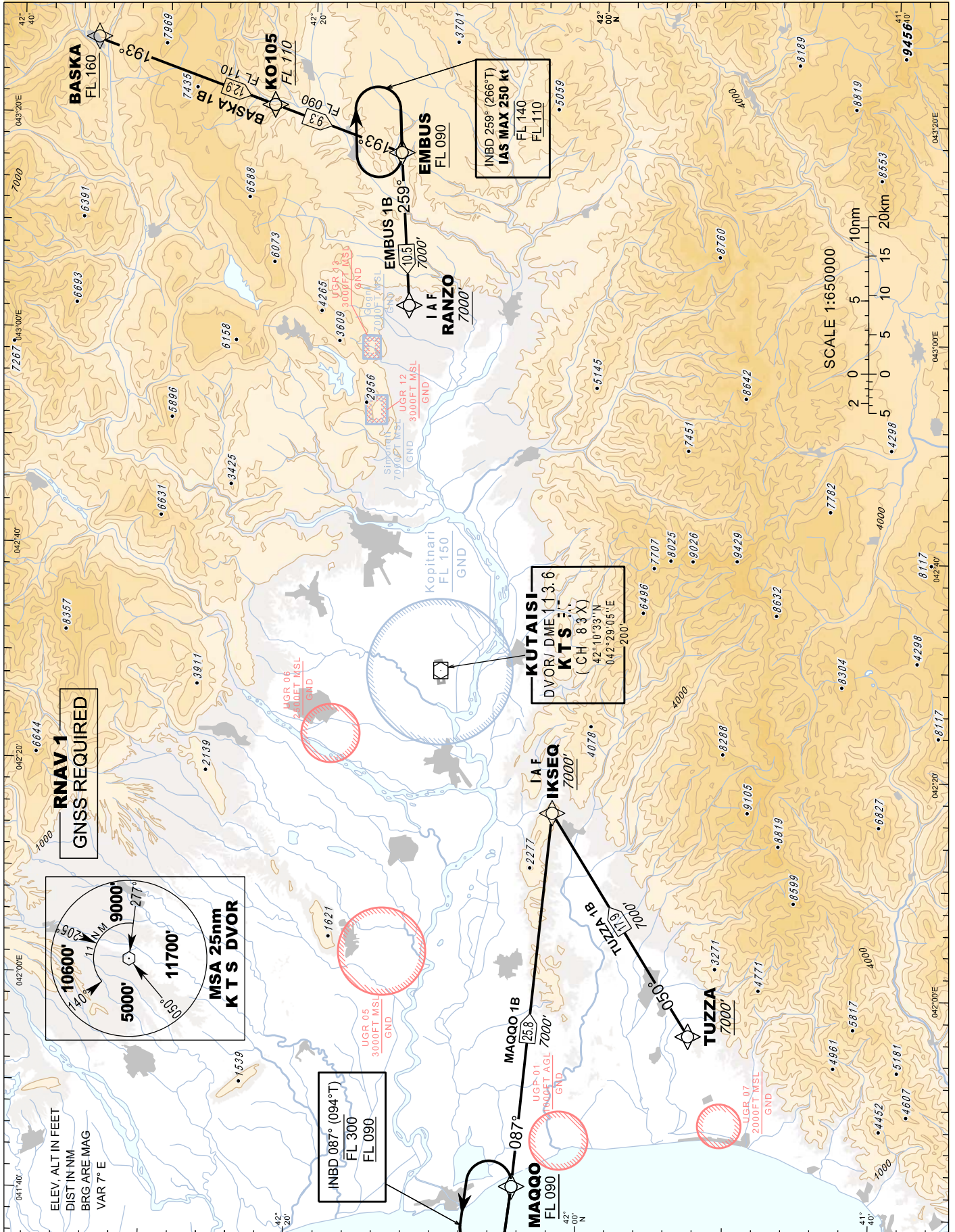


**STANDARD ARRIVAL  
CHART - INSTRUMENT  
(STAR) - ICAO**

TRANSITION LEVEL FL 090  
TRANSITION ALTITUDE 7000'

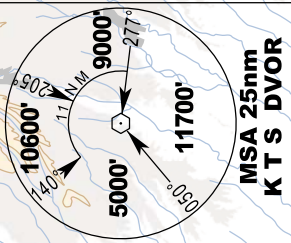
APP 127.100  
TWR 125.500

**KUTAISI/Kopitnari (UGKO)  
RNAV RWY 25  
TUZZA 1B MAQQO 1B  
BASKA 1B EMBUS 1B**



Changes: Added elevation of DME antenna

**RNAV 1  
GNSS REQUIRED**



INBD 087° (094°T)  
FL 300  
FL 090

**KUTAISI  
DVOR DME (13.6  
KTS)  
(CH 83 X)  
(42°10'33"N  
042°29'05"E)**