

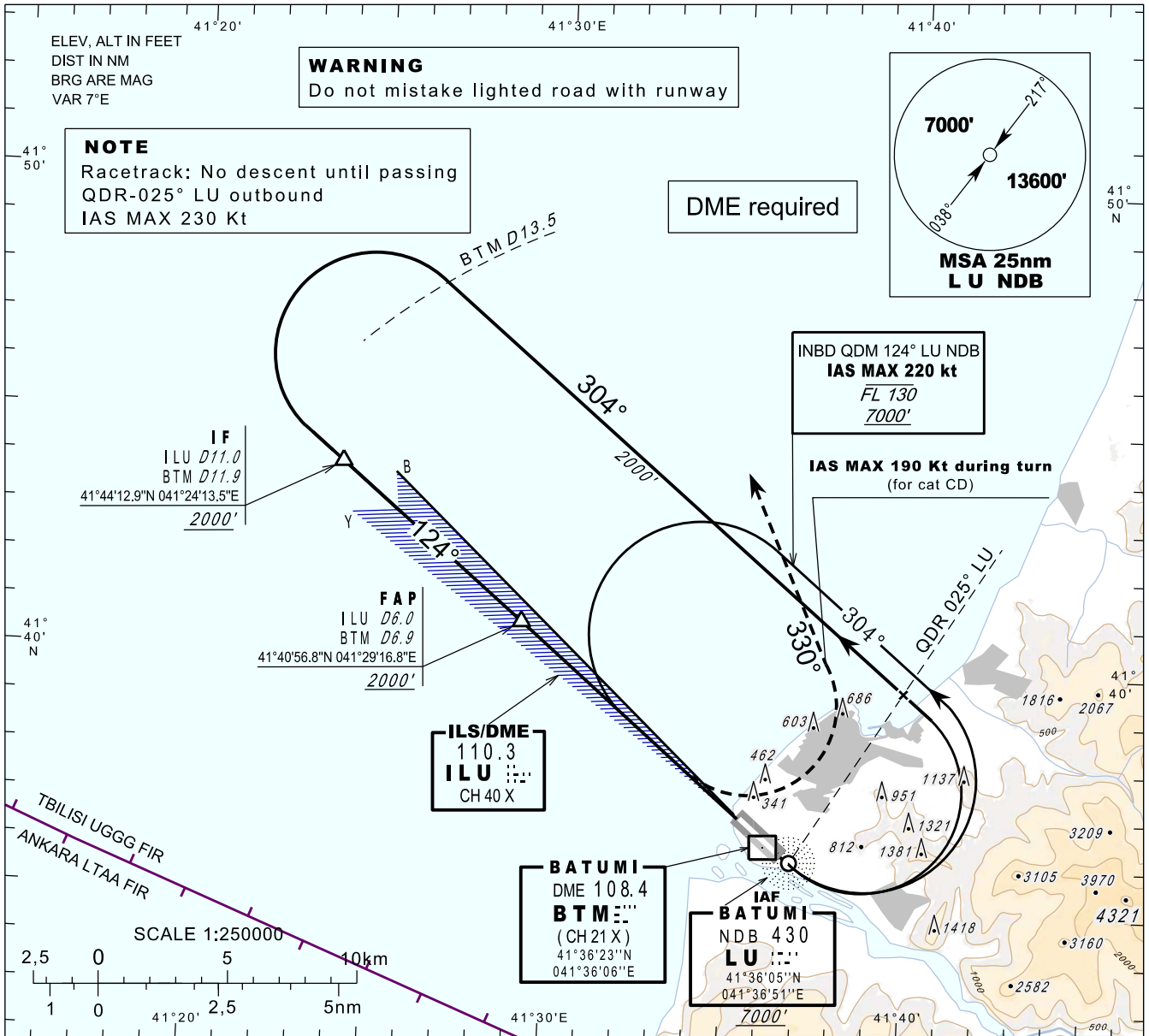
**INSTRUMENT
APPROACH
CHART - ICAO**

AERODROME ELEV 37'
HEIGHTS RELATED TO
THR RWY 12 - ELEV 17'

APP 124.425
TWR 118.600

**BATUMI (UGSB)
ILSy
RWY 12**

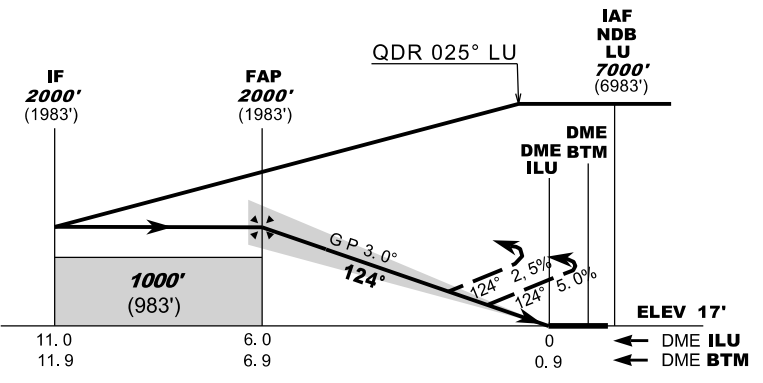
TRANSITION ALT 7000'



MISSED APPROACH

Climb straight ahead. At **800'** turn left heading **330°** climbing to **3000'** and follow ATC instructions.
IAS MAX 190 KT until turn is completed (for cat CD).

ILS RDH 51'



Straight-in Approach

Missed APCH climb gradient	OCA (H)			
	A	B	C	D
2.5%	687 (670)		787 (770)	
5.0%	377 (360)		487 (470)	

DME ILU NM	6	5	4	3	2	1
DME BTM NM	6.9	5.9	4.9	3.9	2.9	1.9
ALT (HGT) ft	2010 (1993)	1682 (1665)	1355 (1338)	1031 (1014)	708 (691)	387 (370)

Changes: Missed approach depiction