

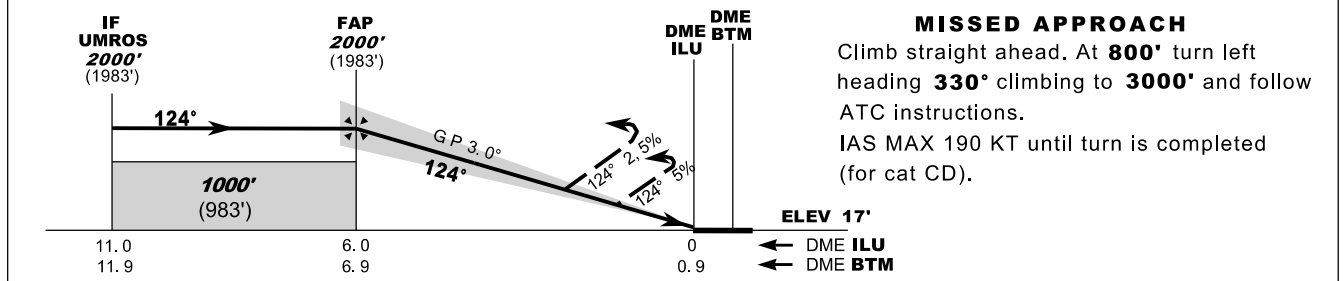
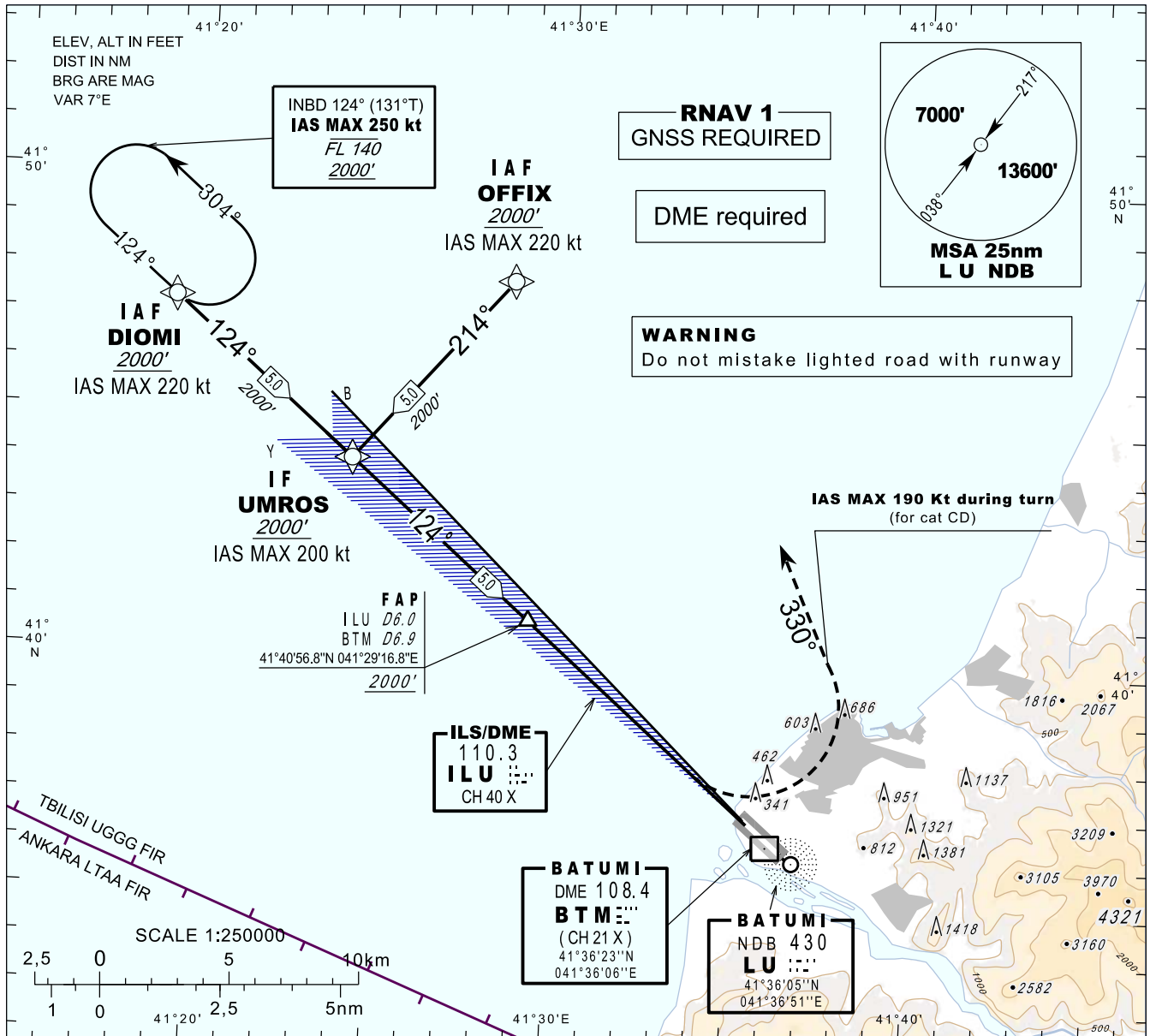
**INSTRUMENT  
APPROACH  
CHART - ICAO**

AERODROME ELEV 37'  
HEIGHTS RELATED TO  
THR RWY 12 - ELEV 17'

APP 124.425  
TWR 118.600

**BATUMI (UGSB)**  
**ILS z**  
**RWY 12**

TRANSITION ALT 7000'



Straight-in Approach						
Missed APCH climb gradient	OCA (H)					
	A	B	C	D		
2.5%	687 (670)		787 (770)			
5.0%	377 (360)		487 (470)			
DME ILU NM	6	5	4	3	2	1
DME BTM NM	6.9	5.9	4.9	3.9	2.9	1.9
ALT (HGT) ft	2010 (1993)	1682 (1665)	1355 (1338)	1031 (1014)	708 (691)	387 (370)

ILS RDH 51'

Changes: Missed approach depiction