

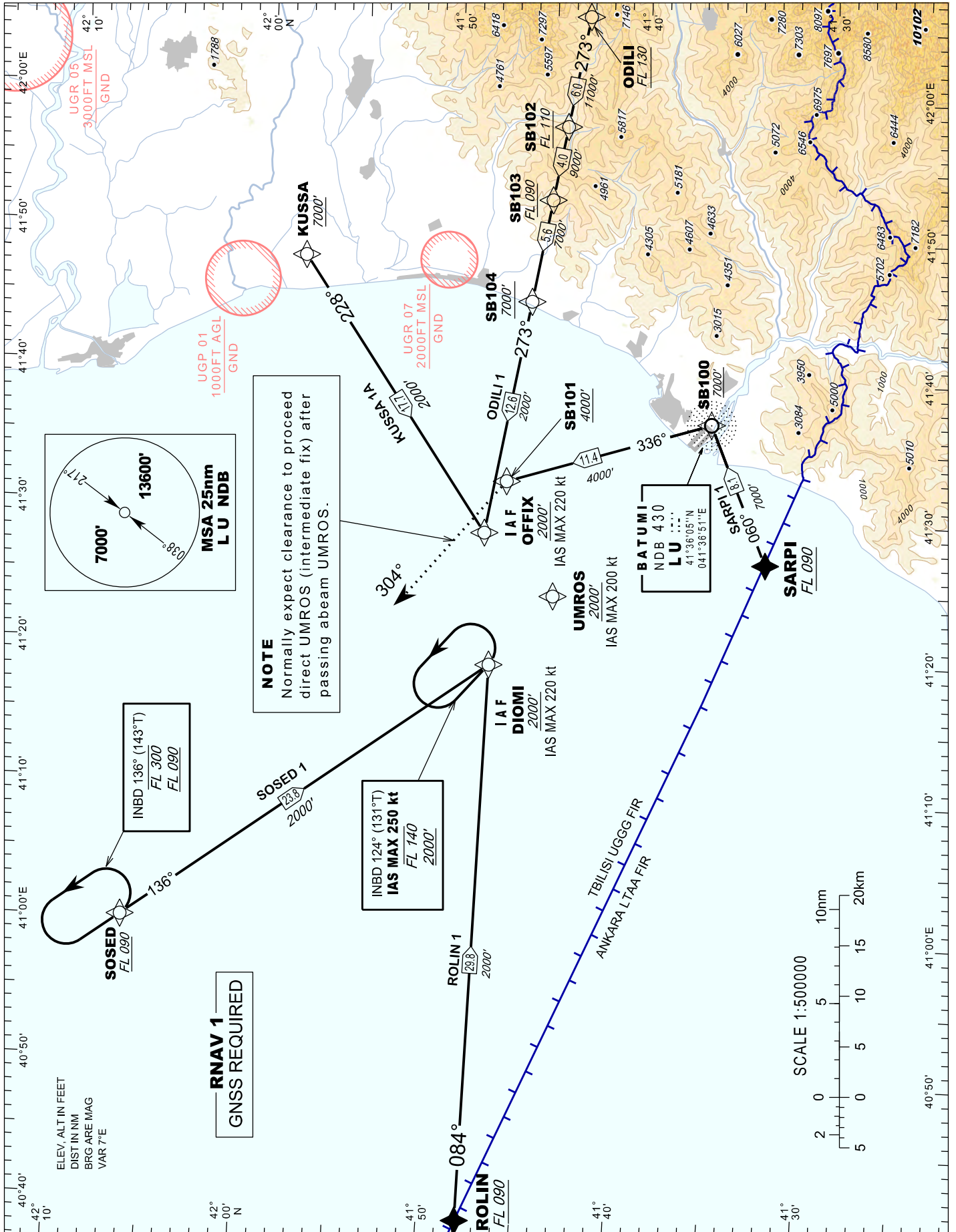
# STANDARD ARRIVAL CHART- INSTRUMENT (STAR) - ICAO

## BATUMI (UGSB)

### RNAV RWY 12

ROLIN 1 SOSED 1 SARPI 1  
KUSSA 1A ODILI 1

TRANSITION LEVEL FL 090	APP 124.425
TRANSITION ALTITUDE 7000'	TWR 118.600



Changes: Added Note and point UMROS