

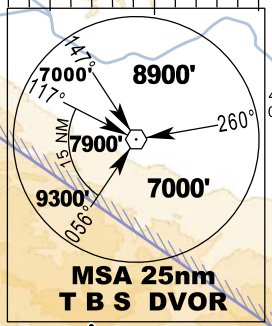
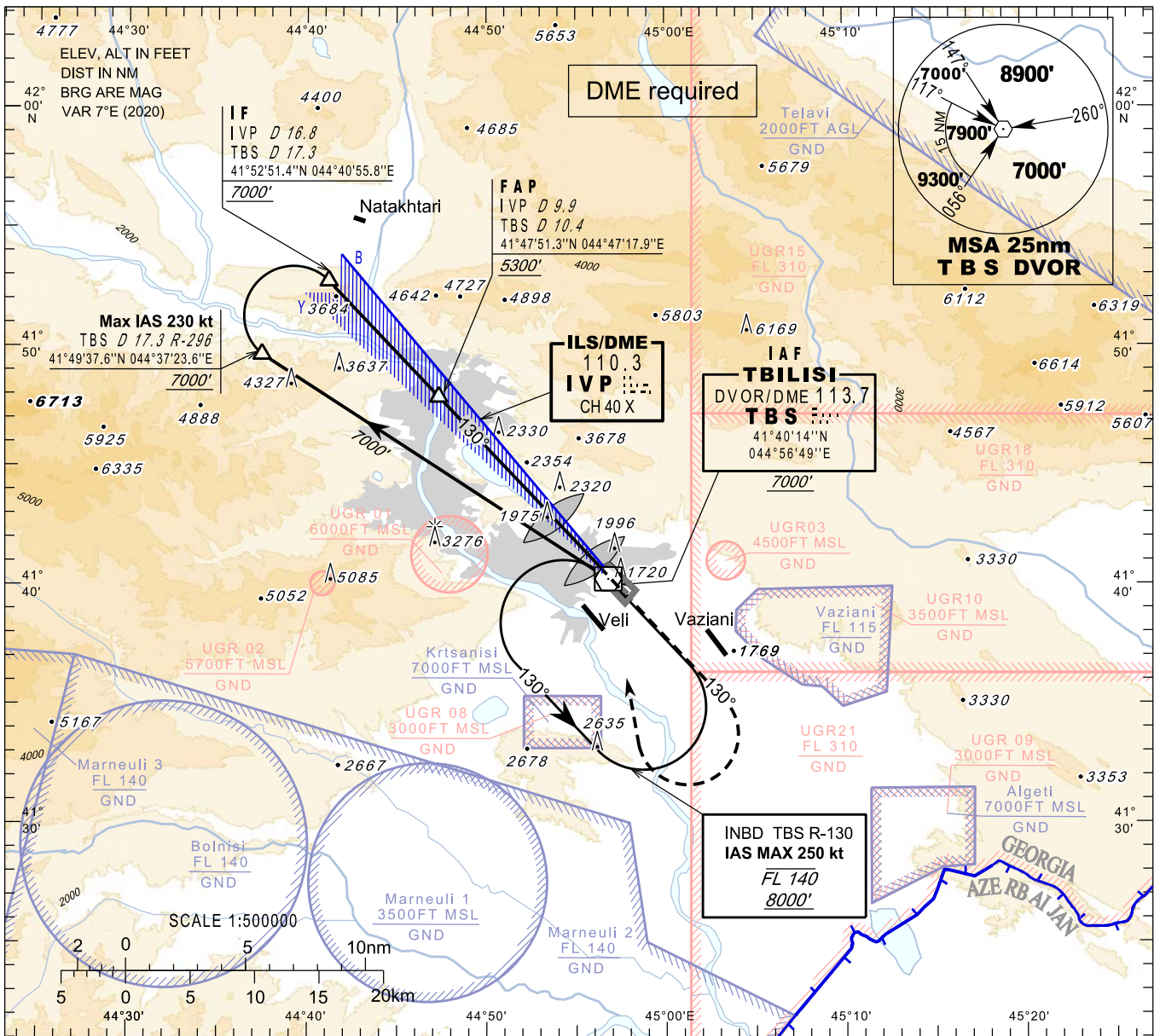
**INSTRUMENT
APPROACH
CHART - ICAO**

**TBILISI/Tbilisi (UGTB)
ILS y
RWY 13R**

HEIGHTS RELATED TO
THR RWY 13R - ELEV 1578'

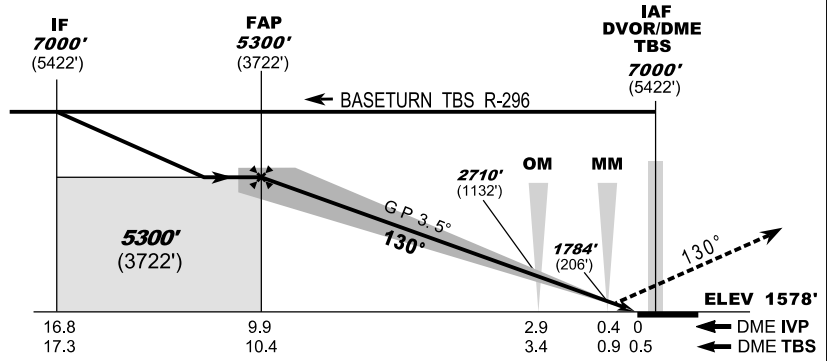
APP 134.600
TWR 119.000 (Primary)
128.000 (Secondary)
ATIS 132.800

TRANSITION ALTITUDE 11000'



MISSED APPROACH
Normal: Climb straight ahead to 7000', when passing 4500' turn right to TBS, then as directed by ATC.
TBS DVOR Unserviceable: Climb straight ahead to 7000', after passing 4500' expect vectoring.
Radio Communication Failure: Climb straight ahead to 8000', when passing 4500' turn right to TBS, hold as published, when ready make new approach.

ILS RDH 50'



Straight in Approach	A B	C	D
OCA(H)	1768 (190)	1778 (200)	1788 (210)

DME IVP NM	9	8	7	6	5	4	3	2	1
DME TBS NM	9.5	8.5	7.5	6.5	5.5	4.5	3.5	2.5	1.5
ALT (HGT) ft	4973 (3395)	4601 (3023)	4230 (2652)	3858 (2280)	3486 (1908)	3115 (1537)	2743 (1165)	2371 (793)	2000 (422)

Changes: New procedures, MSA, Transition ALT, MAG VAR, THR ELEV