

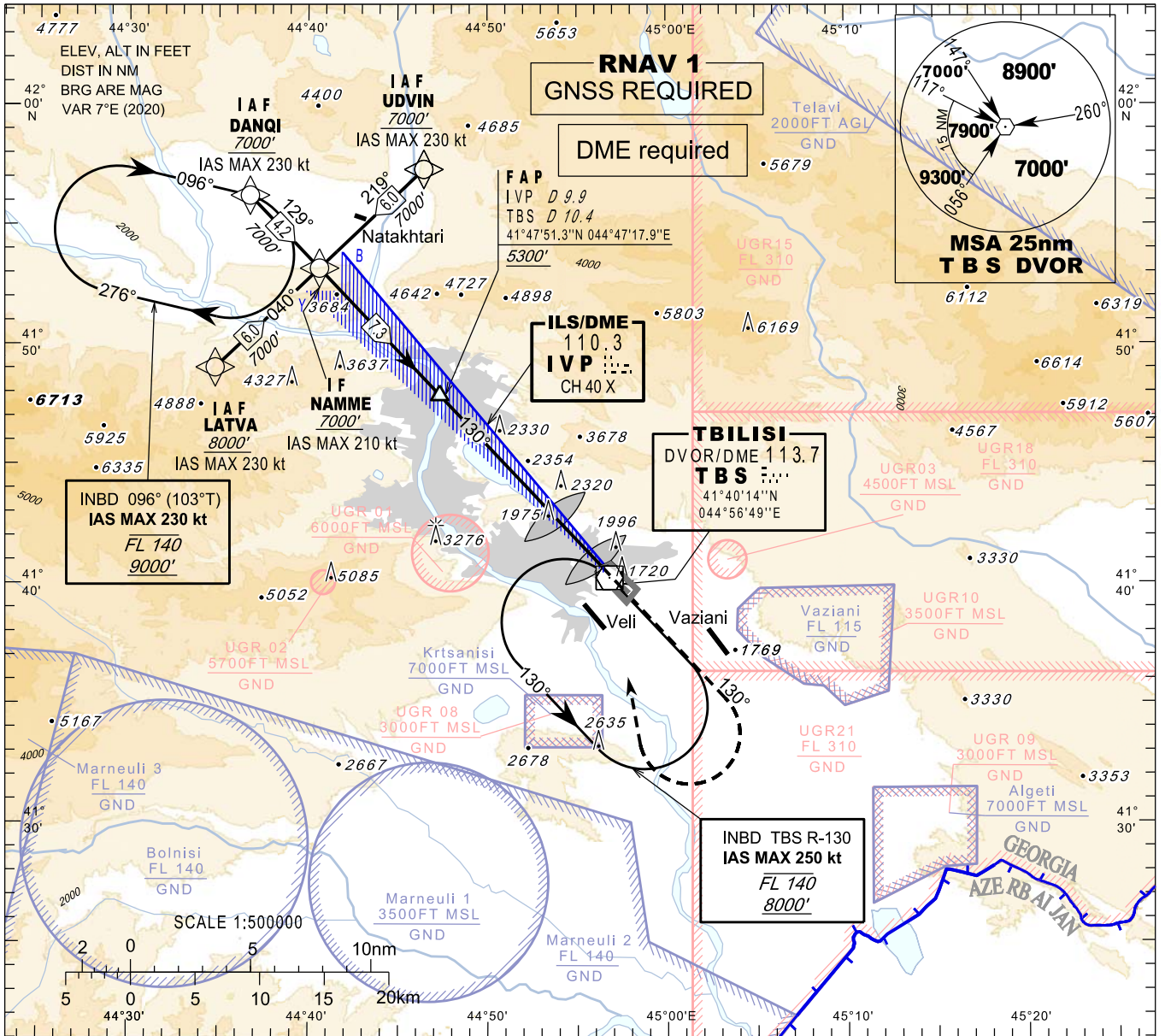
**INSTRUMENT  
APPROACH  
CHART - ICAO**

**TBILISI/Tbilisi (UGTB)  
ILS z  
RWY 13R**

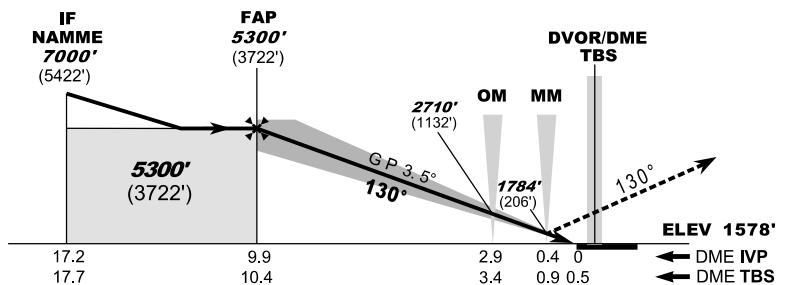
HEIGHTS RELATED TO  
THR RWY 13R - ELEV 1578'

APP 134.600  
TWR 119.000 (Primary)  
128.000 (Secondary)  
ATIS 132.800

TRANSITION ALTITUDE 11000'



**MISSED APPROACH**  
**Normal:**  
 Climb straight ahead to 7000', when passing 4500' turn right to TBS, then as directed by ATC.  
**TBS DVOR Unserviceable:**  
 Climb straight ahead to 7000', after passing 4500' expect vectoring.  
**Radio Communication Failure:**  
 Climb straight ahead to 8000', when passing 4500' turn right to TBS, hold as published, when ready make new approach (ILS y or LOC y or VOR).



ILS RDH 50'

Straight in Approach	A	B	C	D
<b>OCA(H)</b>	<b>1768</b> (190)	<b>1778</b> (200)	<b>1788</b> (210)	
DME IVP NM		9	8	7
DME TBS NM		9.5	8.5	7.5
ALT (HGT) ft	<b>4973</b> (3395)	<b>4601</b> (3023)	<b>4230</b> (2652)	<b>3858</b> (2280)
			<b>3486</b> (1908)	<b>3115</b> (1537)
			<b>2743</b> (1165)	<b>2371</b> (793)
				<b>2000</b> (422)

Changes: New procedures, MSA, Transition ALT, MAG VAR, THR ELEV