

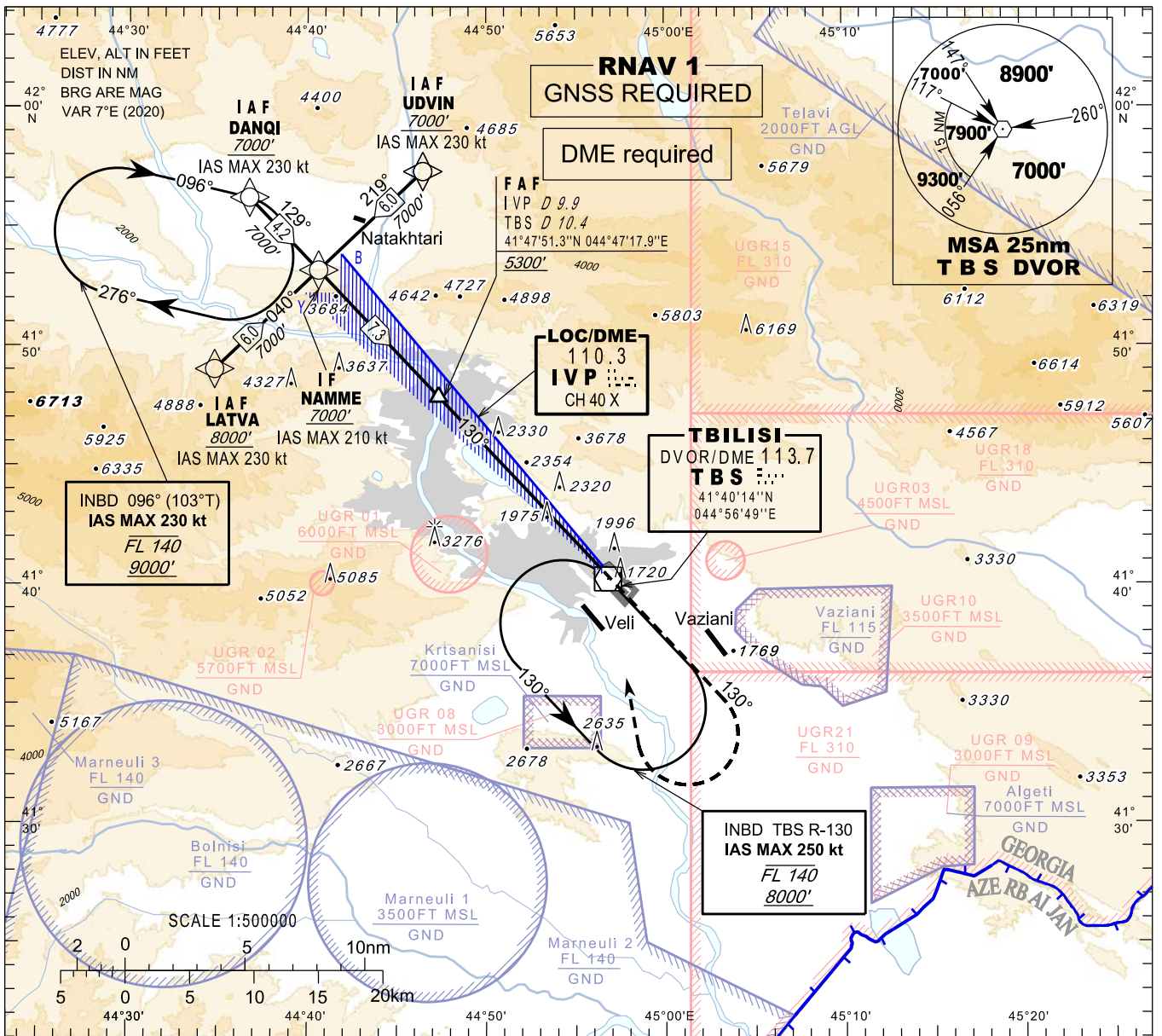
**INSTRUMENT  
APPROACH  
CHART - ICAO**

**TBILISI/Tbilisi (UGTB)  
LOC z  
RWY 13R**

HEIGHTS RELATED TO  
THR RWY 13R - ELEV 1578'

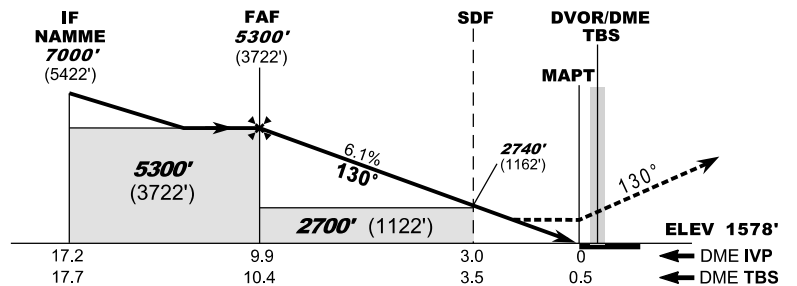
APP 134.600  
TWR 119.000 (Primary)  
128.000 (Secondary)  
ATIS 132.800

TRANSITION ALTITUDE 11000'



Changes: New procedures, MSA, Transition ALT, MAG VAR, THR ELEV

- MISSED APPROACH**
- Normal:** Climb straight ahead to 7000', when passing 4500' turn right to TBS, then as directed by ATC.
  - TBS DVOR Unserviceable:** Climb straight ahead to 7000', after passing 4500' expect vectoring.
  - Radio Communication Failure:** Climb straight ahead to 8000', when passing 4500' turn right to TBS, hold as published, when ready make new approach (ILS y or LOC y or VOR).



Timing is not authorised for defining the MAPT

Straight in Approach	A	B	C	D					
<b>OCA(H)</b>	<b>2280 (700)</b>								
DME IVP NM	9	8	7	6	5	4	3	2	1
DME TBS NM	9.5	8.5	7.5	6.5	5.5	4.5	3.5	2.5	1.5
ALT (HGT) ft	<b>4966 (3388)</b>	<b>4595 (3017)</b>	<b>4224 (2646)</b>	<b>3853 (2275)</b>	<b>3482 (1904)</b>	<b>3111 (1533)</b>	<b>2740 (1162)</b>	<b>2369 (791)</b>	<b>1998 (420)</b>