

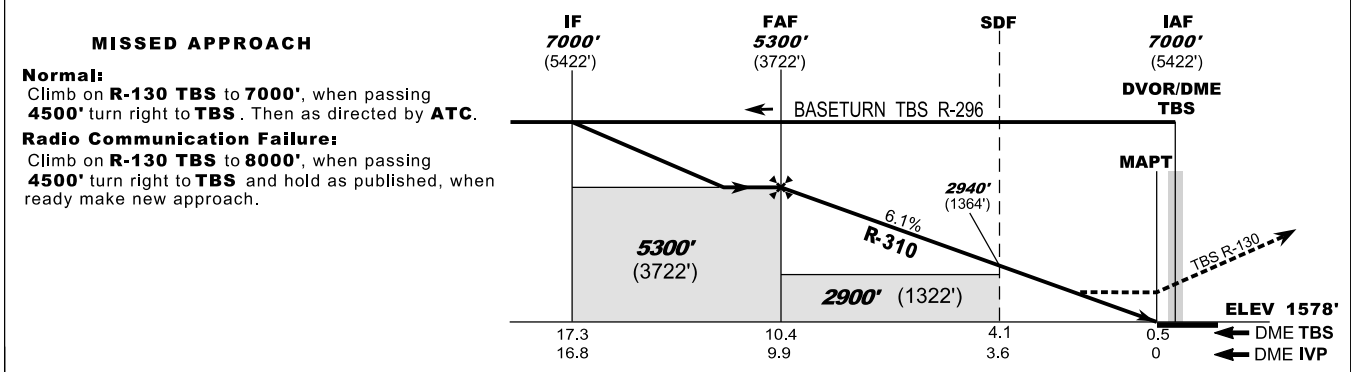
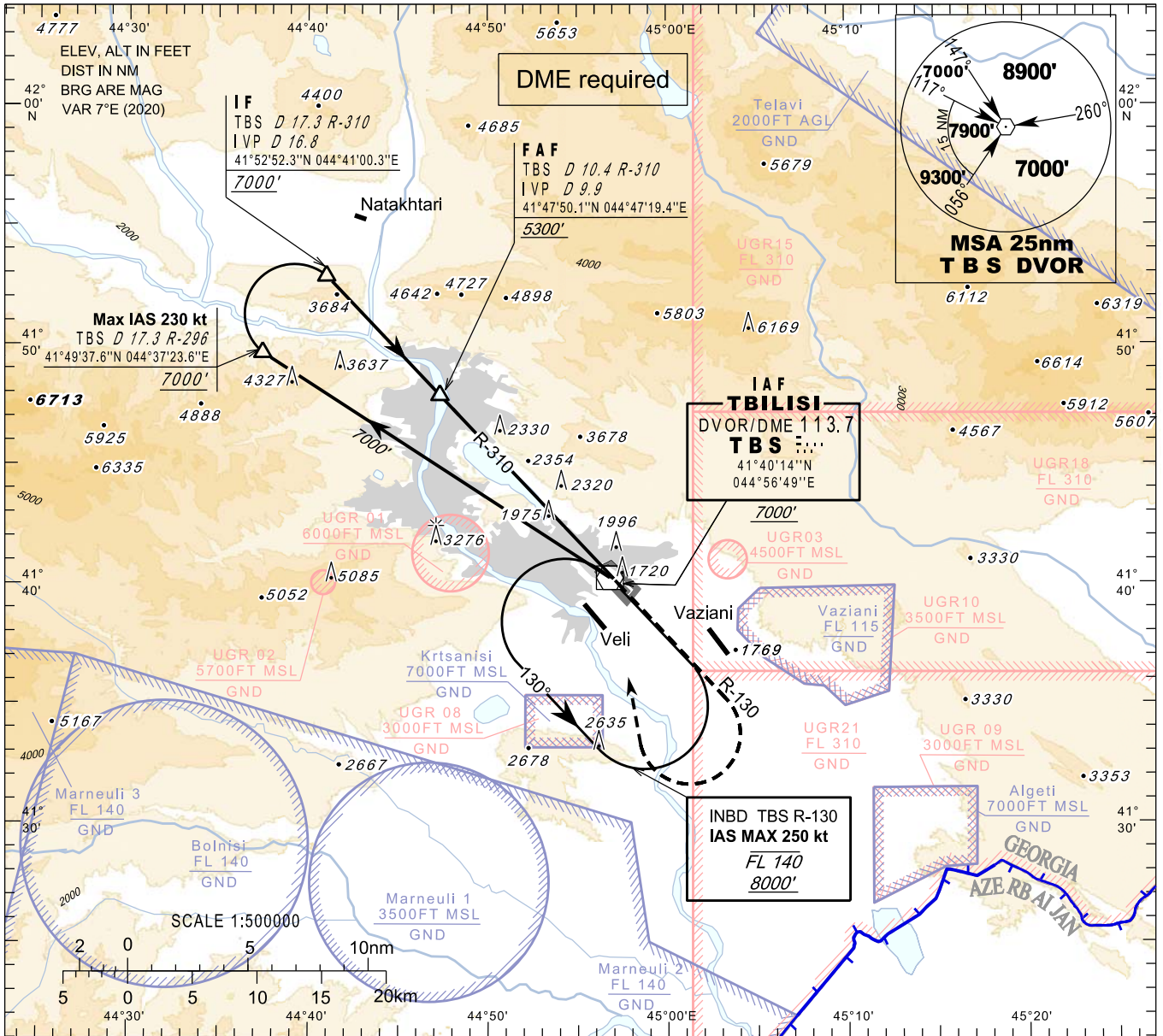
**INSTRUMENT
APPROACH
CHART - ICAO**

**TBILISI/Tbilisi (UGTB)
VOR
RWY 13R**

HEIGHTS RELATED TO
THR RWY 13R - ELEV 1578'

APP 134.600
TWR 119.000 (Primary)
128.000 (Secondary)
ATIS 132.800

TRANSITION ALTITUDE 11000'



Straight-in Approach	A B C D									
	OCA(H)	2580 (1000)								
DME TBS NM	10	9	8	7	6	5	4	3	2	1
DME IVP NM	9.5	8.5	7.5	6.5	5.5	4.5	3.5	2.5	1.5	0.5
ALT (HGT) ft	5142 (3564)	4771 (3193)	4400 (2822)	4029 (2451)	3658 (2080)	3287 (1709)	2916 (1338)	2545 (967)	2174 (596)	1802 (224)

Changes: New procedures, MSA, Transition ALT, MAG VAR, THR ELEV

Timing is not authorised for defining the MAPT