

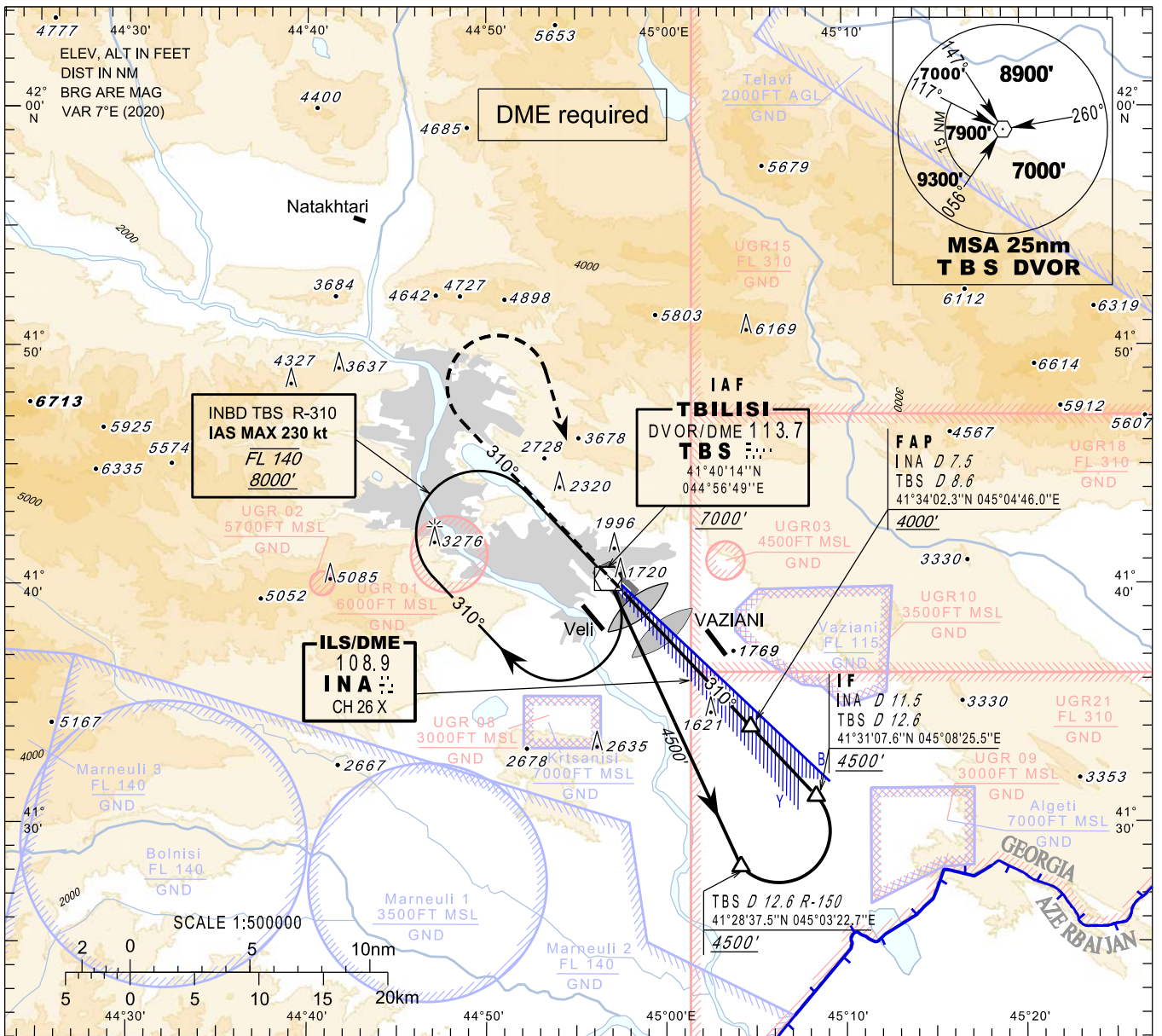
**INSTRUMENT
APPROACH
CHART - ICAO**

**TBILISI/Tbilisi (UGTB)
ILS y
RWY 31L**

HEIGHTS RELATED TO
THR RWY 31L - ELEV 1513'

APP 134.600
TWR 119.000 (Primary)
128.000 (Secondary)
ATIS 132.800

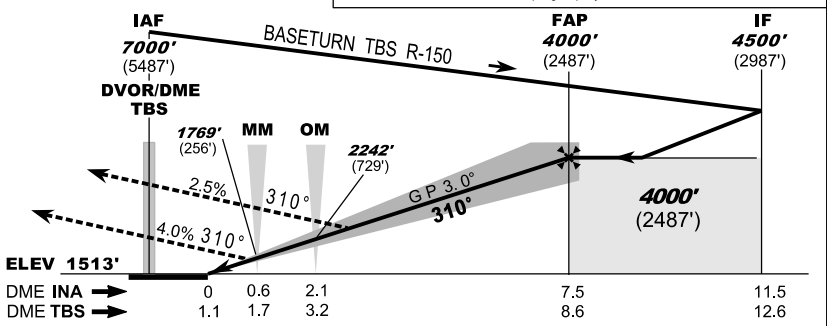
TRANSITION ALTITUDE 11000'



MISSED APPROACH
Normal: Climb straight ahead to 7000', when passing 6000' turn right to TBS, then as directed by ATC.
TBS DVOR Unserviceable: Climb straight ahead to 7000', when passing 6000' turn right heading 170, expect vectoring.
Radio Communication Failure: Climb straight ahead to 8000', when passing 6000' turn right to TBS, hold as published, when ready make new approach.

WARNING:
1. DO NOT CONFUSE Tbilisi/Tbilisi airport with VAZIANI military aerodrome located 4 nm south-east of Tbilisi/Tbilisi airport.
2. Possibility of WIND SHEAR and TURBULENCE on final (including short final) should be considered during strong winds due to local topography.

ILS RDH 54'



Missed APCH climb gradient	Straight in Approach				DME INA NM	DME TBS NM	ALT (HGT) ft
	OCA(H)						
	A	B	C	D			
2.5%	2376	(863)	2394	(881)	2403	(890)	
4.0%	1703	(190)	1713	(200)	1723	(210)	
					7	6	5
					4	3	2
					3	2	1
					8.1	7.1	6.1
					5.1	4.1	3.1
					2.1		
					3839	(2326)	3510
					1668	2855	(1342)
					2530	(1017)	2208
					695	1886	(373)

Changes: New procedures, MSA, Transition ALT, MAG VAR, THR ELEV