

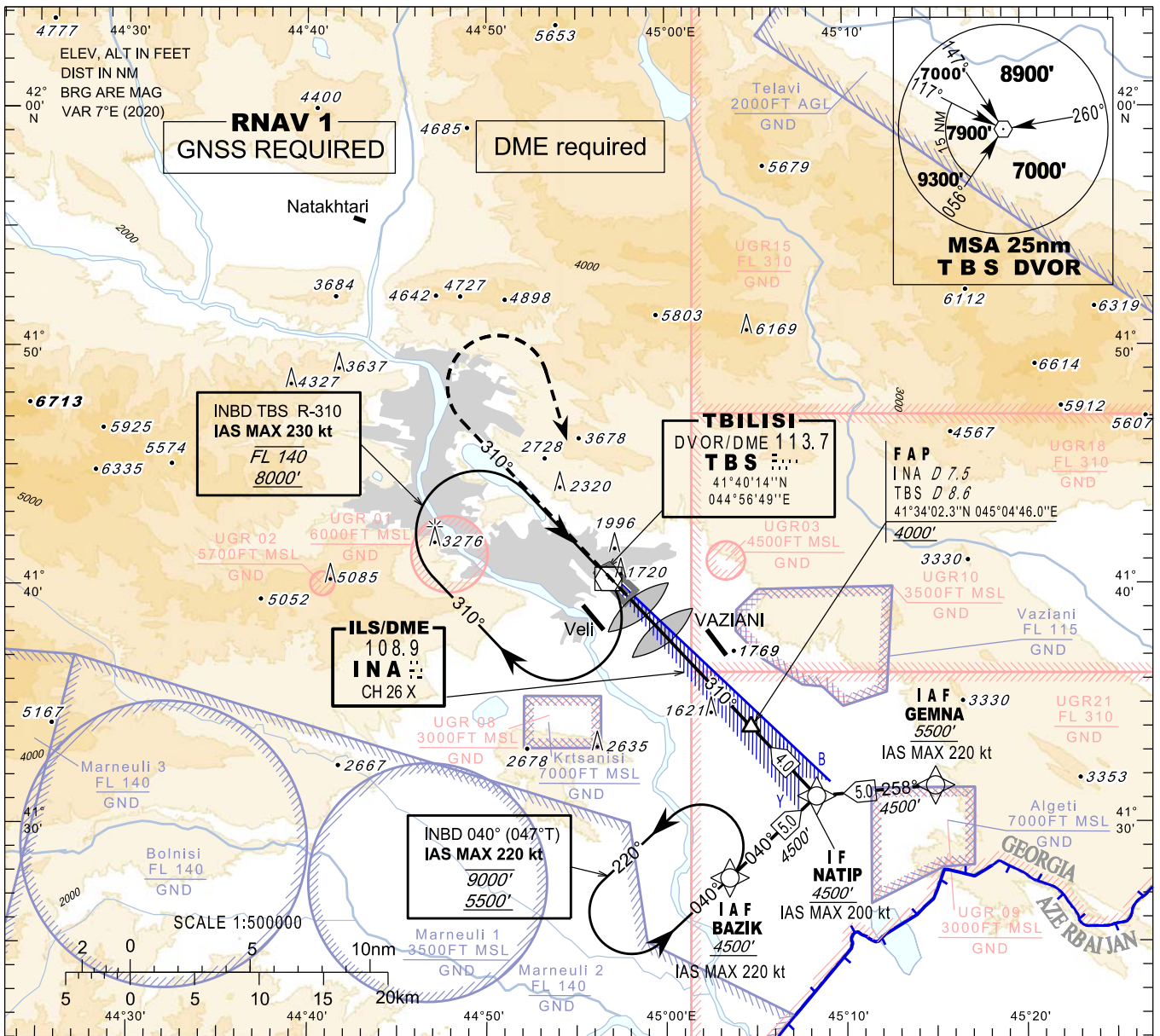
**INSTRUMENT
APPROACH
CHART - ICAO**

**TBILISI/Tbilisi (UGTB)
ILS z
RWY 31L**

HEIGHTS RELATED TO
THR RWY 31L - ELEV 1513'

APP 134.600
TWR 119.000 (Primary)
128.000 (Secondary)
ATIS 132.800

TRANSITION ALTITUDE 11000'

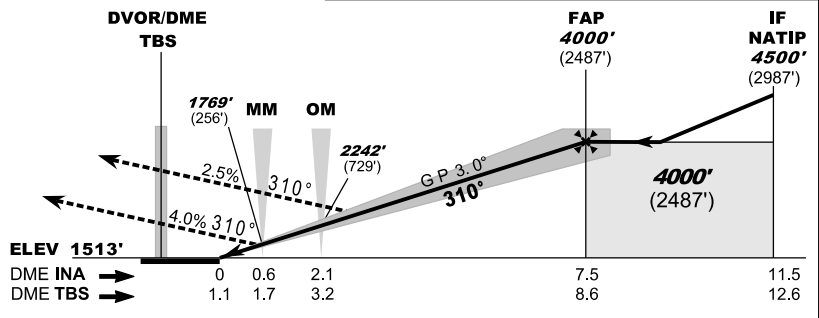


MISSED APPROACH

- Normal:**
Climb straight ahead to **7000'**, when passing **6000'** turn right to **TBS**, then as directed by **ATC**.
- TBS DVOR Unserviceable:**
Climb straight ahead to **7000'**, when passing **6000'** turn right heading **170°**, expect vectoring.
- Radio Communication Failure:**
Climb straight ahead to **8000'**, when passing **6000'** turn right to **TBS**, hold as published, when ready make new approach (ILS y or LOC y or VOR).

ILS RDH 54'

- WARNING:**
1. **DO NOT CONFUSE** TBILISI/Tbilisi airport with VAZIANI military aerodrome located 4 nm south-east of TBILISI/Tbilisi airport.
 2. Possibility of **WIND SHEAR** and **TURBULENCE** on final (including short final) should be considered during strong winds due to local topography.



| Missed APCH climb gradient | OCA(H) | | |
|-------------------------------|------------|------------|------------|
| | A | B | C |
| 2.5% | 2376 (863) | 2394 (881) | 2403 (890) |
| 4.0% | 1703 (190) | 1713 (200) | 1723 (210) |

| | 7 | 6 | 5 | 4 | 3 | 2 | 1 |
|--------------|-------------|-------------|-------------|-------------|-------------|------------|------------|
| DME INA NM | | | | | | | |
| DME TBS NM | 8.1 | 7.1 | 6.1 | 5.1 | 4.1 | 3.1 | 2.1 |
| ALT (HGT) ft | 3839 (2326) | 3510 (1997) | 3181 (1668) | 2855 (1342) | 2530 (1017) | 2208 (695) | 1886 (373) |

Changes: New procedures, MSA, Transition ALT, MAG VAR, THR ELEV