

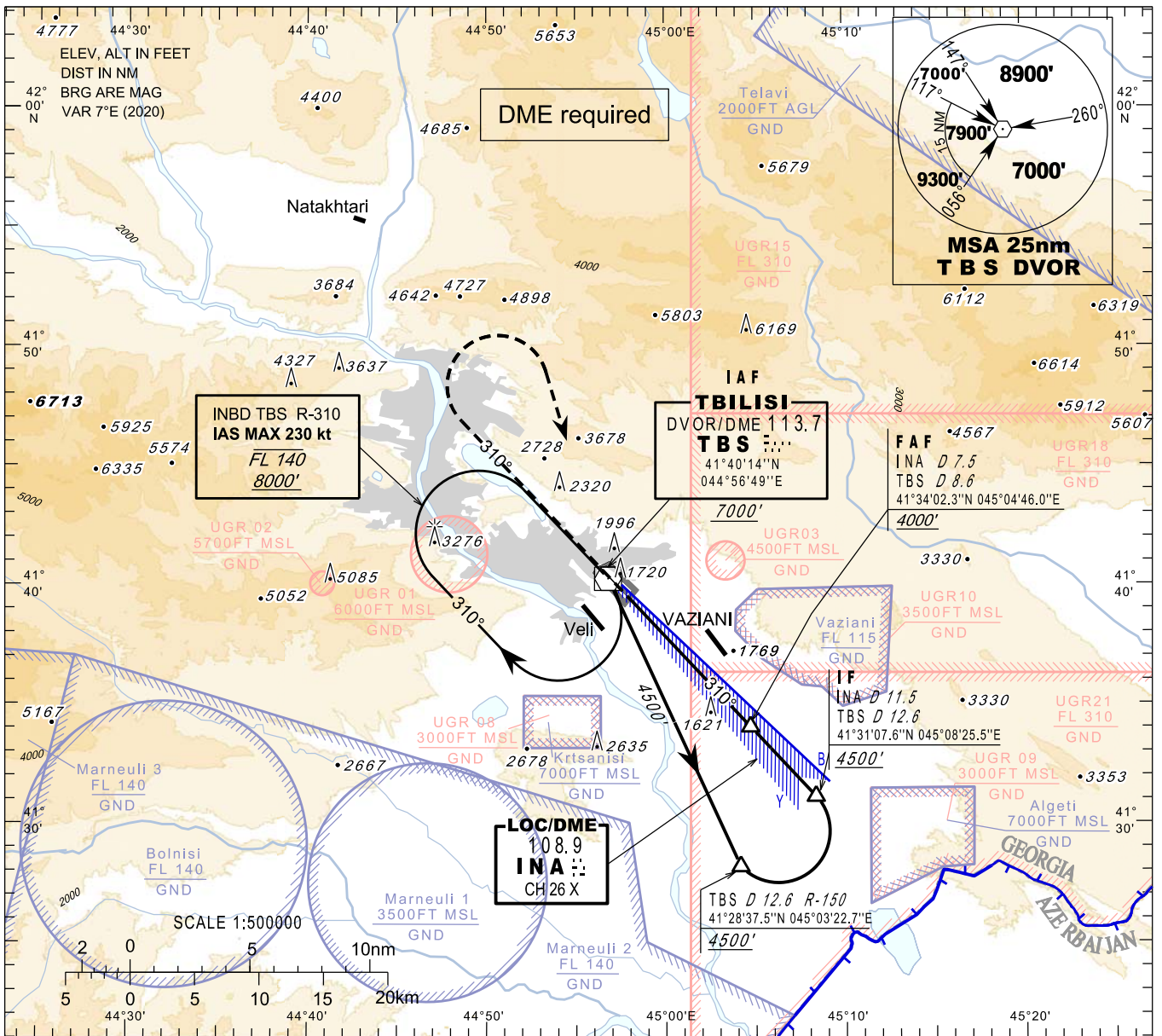
**INSTRUMENT
APPROACH
CHART - ICAO**

**TBILISI/Tbilisi (UGTB)
LOC y
RWY 31L**

HEIGHTS RELATED TO
THR RWY 31L - ELEV 1513'

APP 134.600
TWR 119.000 (Primary)
128.000 (Secondary)
ATIS 132.800

TRANSITION ALTITUDE 11000'



Changes: New procedures, MSA, Transition ALT, MAG VAR, THR ELEV

MISSED APPROACH

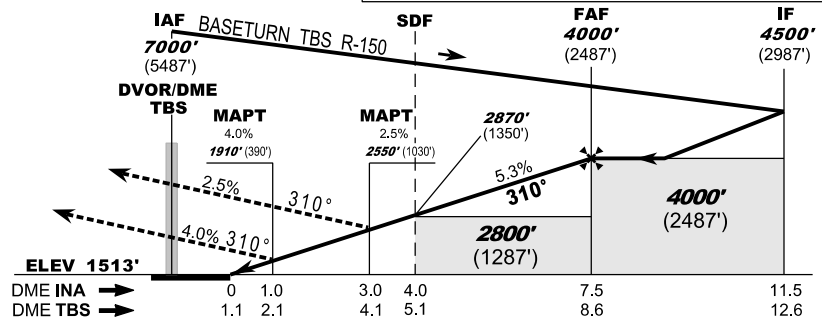
- Normal:**
Climb straight ahead to 7000', when passing 6000' turn right to TBS, then as directed by ATC.
- TBS DVOR Unserviceable:**
Climb straight ahead to 7000', when passing 6000' turn right heading 170, expect vectoring.
- Radio Communication Failure:**
Climb straight ahead to 8000', when passing 6000' turn right to TBS, hold as published, when ready make new approach.

Timing is not authorised for defining the MAPT

WARNING:

- DO NOT CONFUSE Tbilisi/Tbilisi airport with VAZIANI military aerodrome located 4 nm south-east of Tbilisi/Tbilisi airport.
- Possibility of WIND SHEAR and TURBULENCE on final (including short final) should be considered during strong winds due to local topography.

Straight in Approach	
Missed APCH climb gradient	OCA(H)
	A B C D
2.5%	2550 (1030)
4.0%	1910 (390)



	DME INA NM	DME TBS NM	ALT (HGT) ft
	7	8.1	3837 (2324)
	6	7.1	3512 (1999)
	5	6.1	3187 (1674)
	4	5.1	2862 (1349)
	3	4.1	2537 (1024)
	2	3.1	2212 (699)
	1	2.1	1887 (374)