

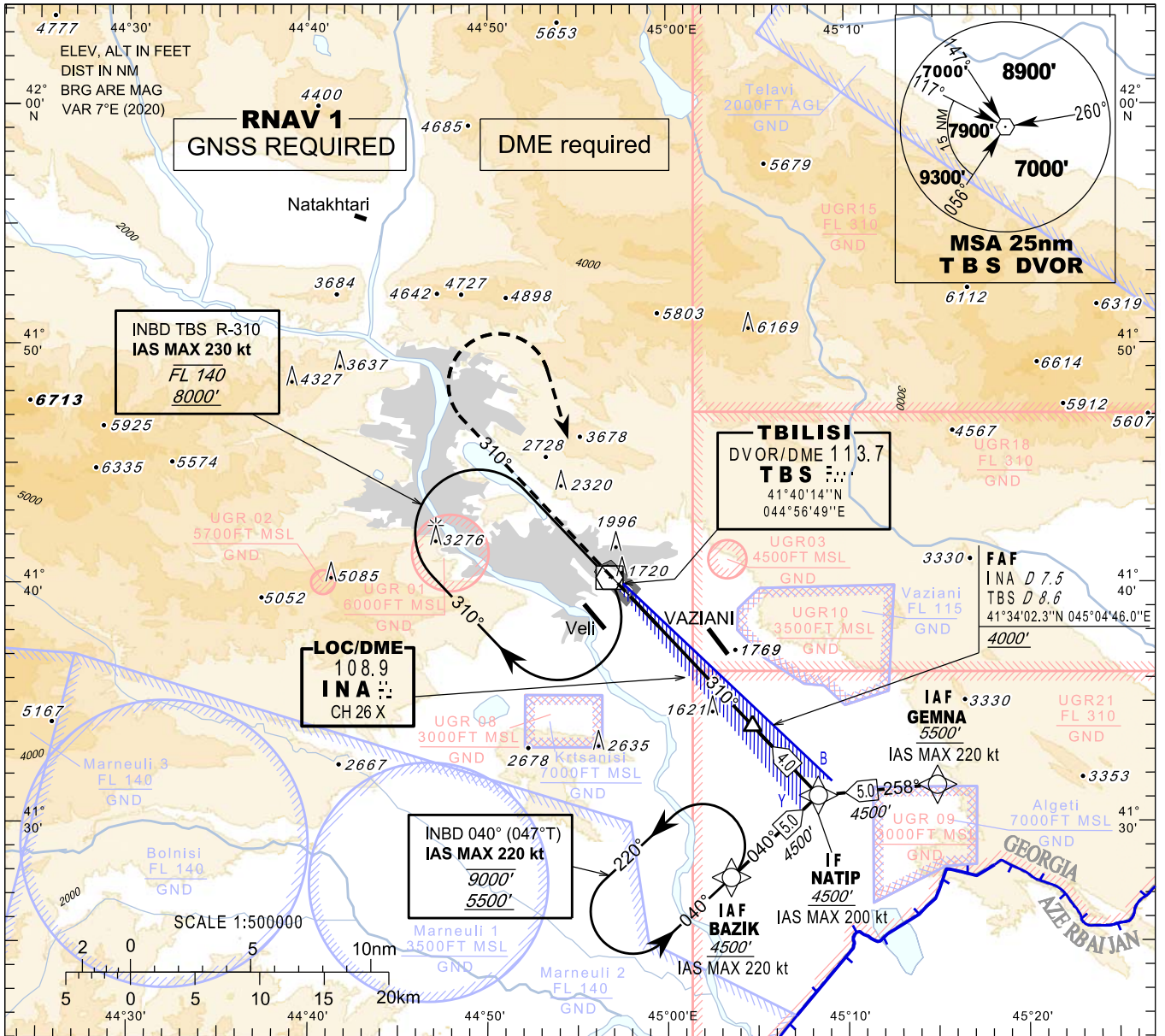
**INSTRUMENT
APPROACH
CHART - ICAO**

**TBILISI/Tbilisi (UGTB)
LOC z
RWY 31L**

HEIGHTS RELATED TO
THR RWY 31L - ELEV 1513'

APP 134.600
TWR 119.000 (Primary)
128.000 (Secondary)
ATIS 132.800

TRANSITION ALTITUDE 11000'

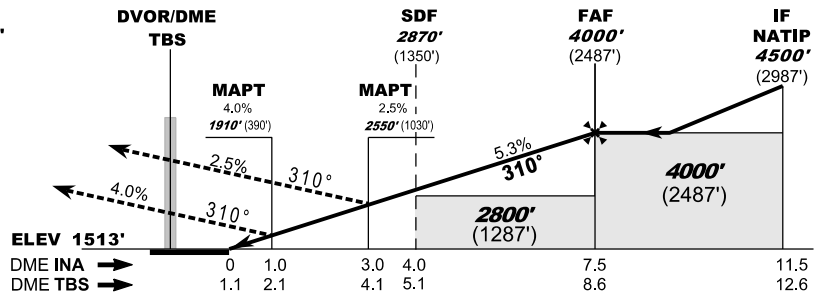


Changes: New procedures, MSA, Transition ALT, MAG VAR, THR ELEV

MISSED APPROACH
Normal:
Climb straight ahead to **7000'**, when passing **6000'** turn right to **TBS**, then as directed by **ATC**.
TBS DVOR Unserviceable:
Climb straight ahead to **7000'**, when passing **6000'** turn right heading **170**, expect vectoring.
Radio Communication Failure:
Climb straight ahead to **8000'**, when passing **6000'** turn right to **TBS**, hold as published, when ready make new approach (ILS y or LOC y or VOR).

Timing is not authorised for defining the MAPT

- WARNING:**
1. **DO NOT CONFUSE** TBILISI/Tbilisi airport with VAZIANI military aerodrome located 4 nm south-east of TBILISI/Tbilisi airport.
 2. Possibility of **WIND SHEAR** and **TURBULENCE** on final (including short final) should be considered during strong winds due to local topography.



Straight in Approach		OCA (H)			
Missed APCH	climb gradient	A	B	C	D
2.5%		2550			(1030)
4.0%		1910			(390)

DME INA NM	7	6	5	4	3	2	1
DME TBS NM	8.1	7.1	6.1	5.1	4.1	3.1	2.1
ALT (HGT) ft	3837 (2324)	3512 (1999)	3187 (1674)	2862 (1349)	2537 (1024)	2212 (699)	1887 (374)