

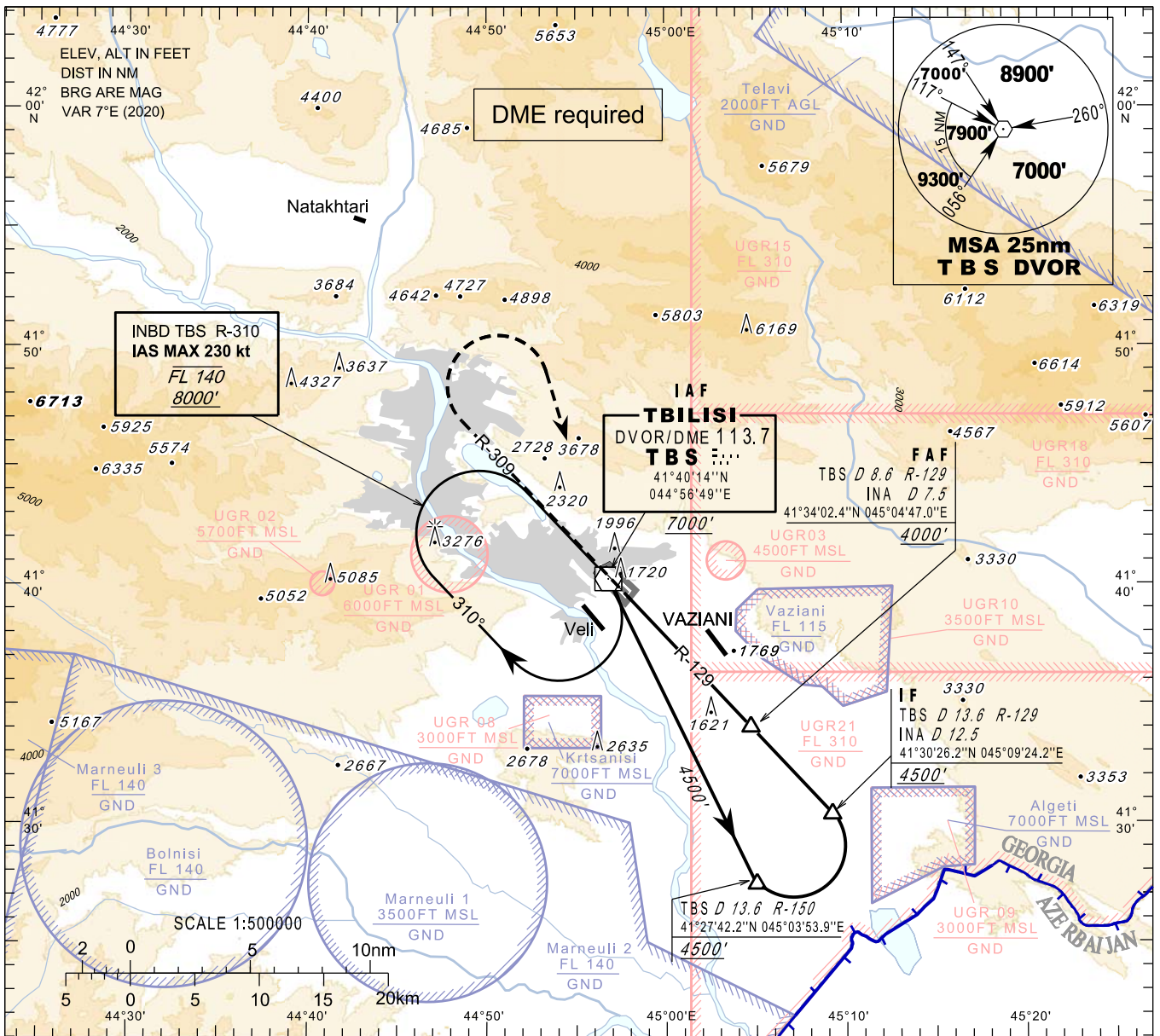
**INSTRUMENT
APPROACH
CHART - ICAO**

**TBILISI/Tbilisi (UGTB)
VOR
RWY 31L**

HEIGHTS RELATED TO
THR RWY 31L - ELEV 1513'

APP 134.600
TWR 119.000 (Primary)
128.000 (Secondary)
ATIS 132.800

TRANSITION ALTITUDE 11000'



Changes: New procedures, MSA, Transition ALT, MAG VAR, THR ELEV

MISSED APPROACH

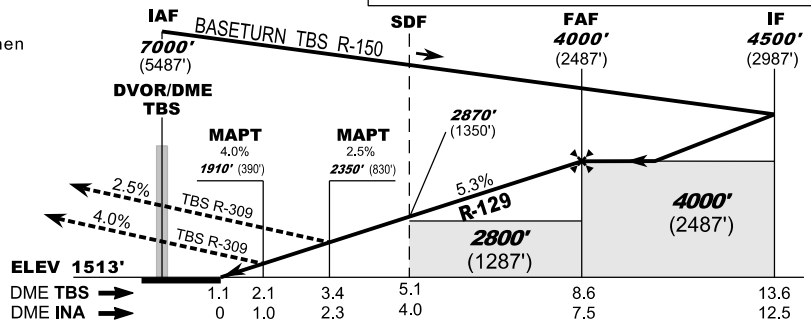
Normal:
Climb on **R-309 TBS** to **7000'**, when passing **6000'** turn right to **TBS**, then as directed by **ATC**.

Radio Communication Failure:
Climb on **R-309 TBS** to **8000'**, when passing **6000'** turn right to **TBS** and hold as published, when ready make new approach.

Timing is not authorised for defining the MAPT

- WARNING:**
1. **DO NOT CONFUSE** TBILISI/Tbilisi airport with VAZIANI military aerodrome located 4 nm south-east of TBILISI/Tbilisi airport.
 2. Possibility of **WIND SHEAR** and **TURBULENCE** on final (including short final) should be considered during strong winds due to local topography.

Straight in Approach		OCA (H)			
Missed APCH climb gradient		A	B	C	D
2.5%		2350			(830)
4.0%		1910			(390)



DME TBS NM	8	7	6	5	4	3	2
DME INA NM	6.9	5.9	4.9	3.9	2.9	1.9	0.9
ALT (HGT) ft	3807 (2294)	3482 (1969)	3157 (1644)	2832 (1319)	2507 (994)	2182 (669)	1857 (344)