

# STANDARD DEPARTURE CHART- INSTRUMENT (SID) - ICAO

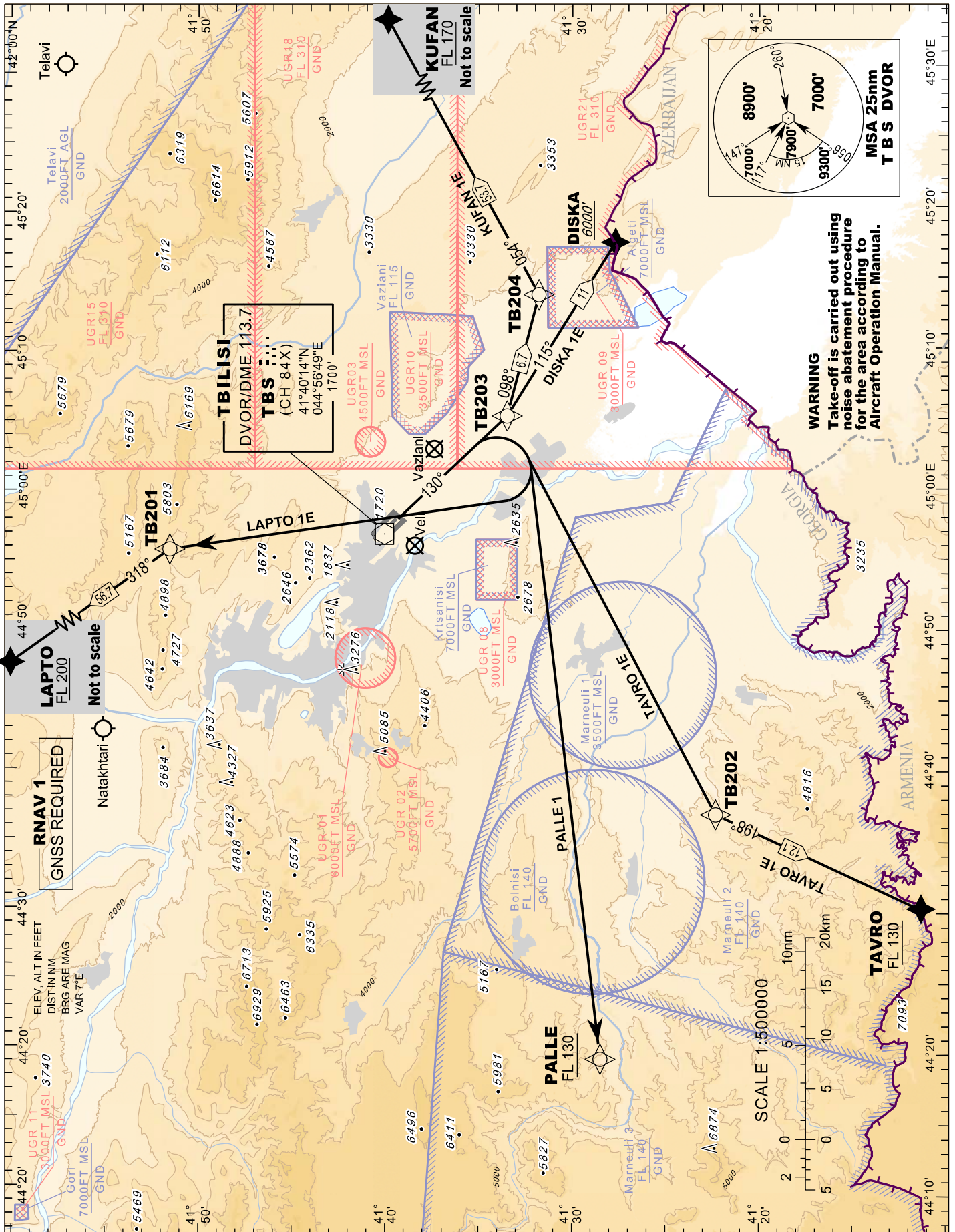
## TBILISI/Tbilisi (UGTB)

### RNAV RWY 13R

PALLE 1 LAPTO 1E KUFAN 1E  
DISKA 1E TAVRO 1E

TRANSITION ALTITUDE  
11000'

APP 134.600  
TWR 119.000 (Primary)  
128.000 (Secondary)



Changes: Added elevation of DME antenna