

**STANDARD ARRIVAL CHART-
INSTRUMENT (STAR) - ICAO**

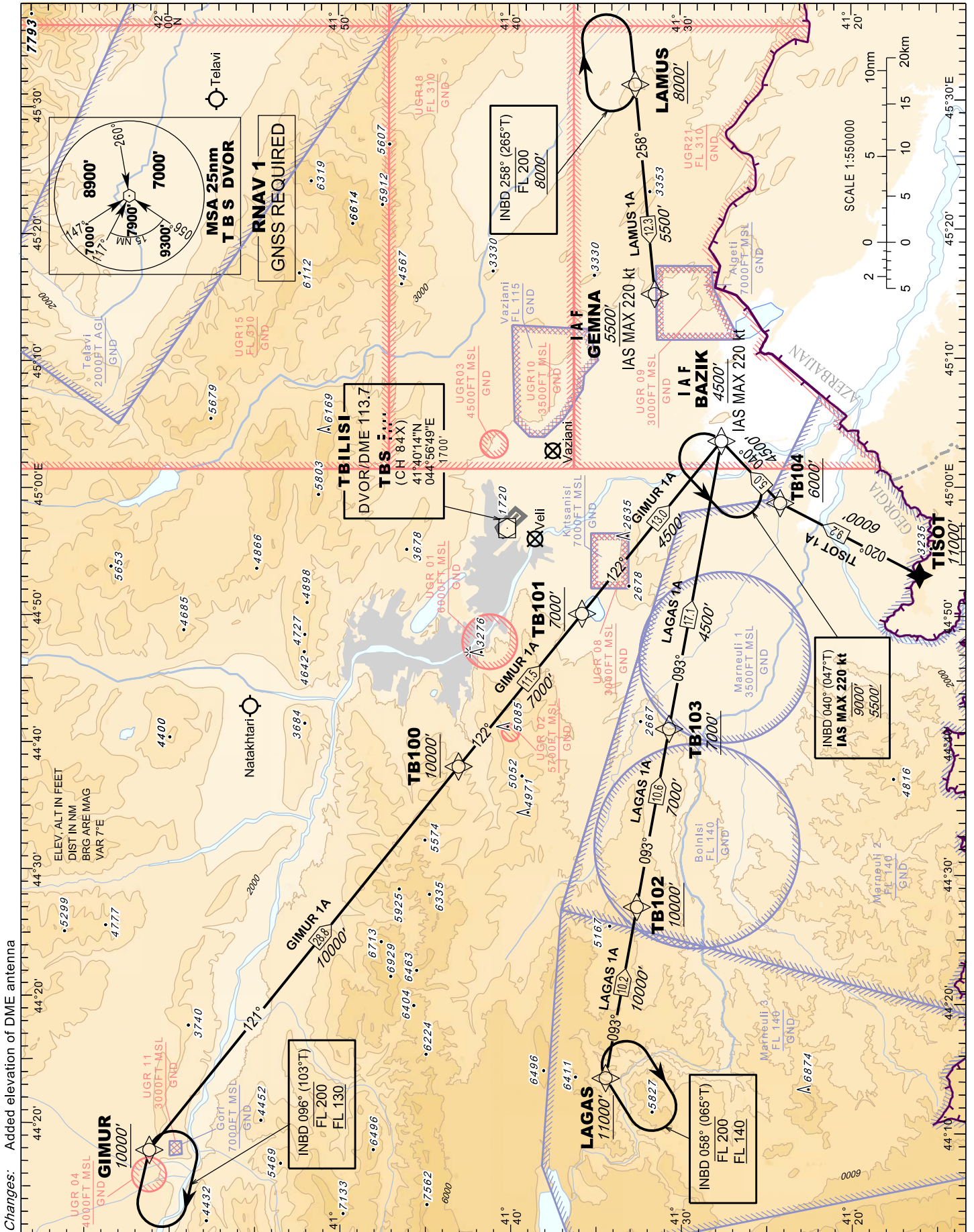
TBILISI/Tbilisi (UGTB)

RNAV RWY 31L

GIMUR 1A LAMUS 1A
TISOT 1A LAGAS 1A

TRANSITION LEVEL FL 130
TRANSITION ALTITUDE 11000'

APP 134.600
TWR 119.000 (Primary)
128.000 (Secondary)
ATIS 132.800



Changes: Added elevation of DME antenna