

AERODROME CHART - ICAO

BATUMI (UGSB)

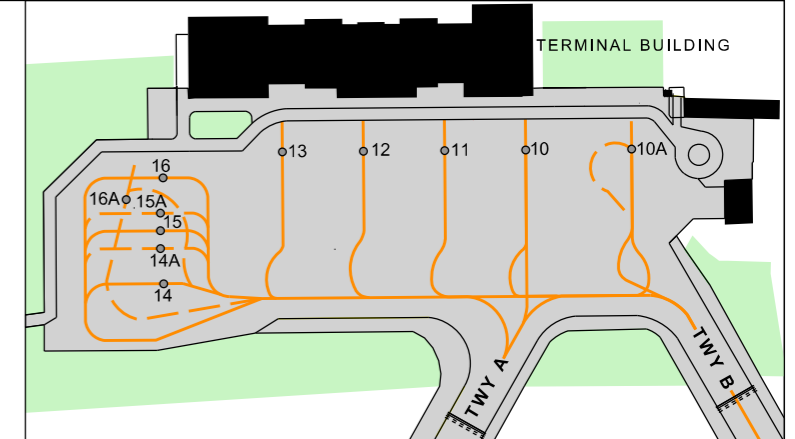
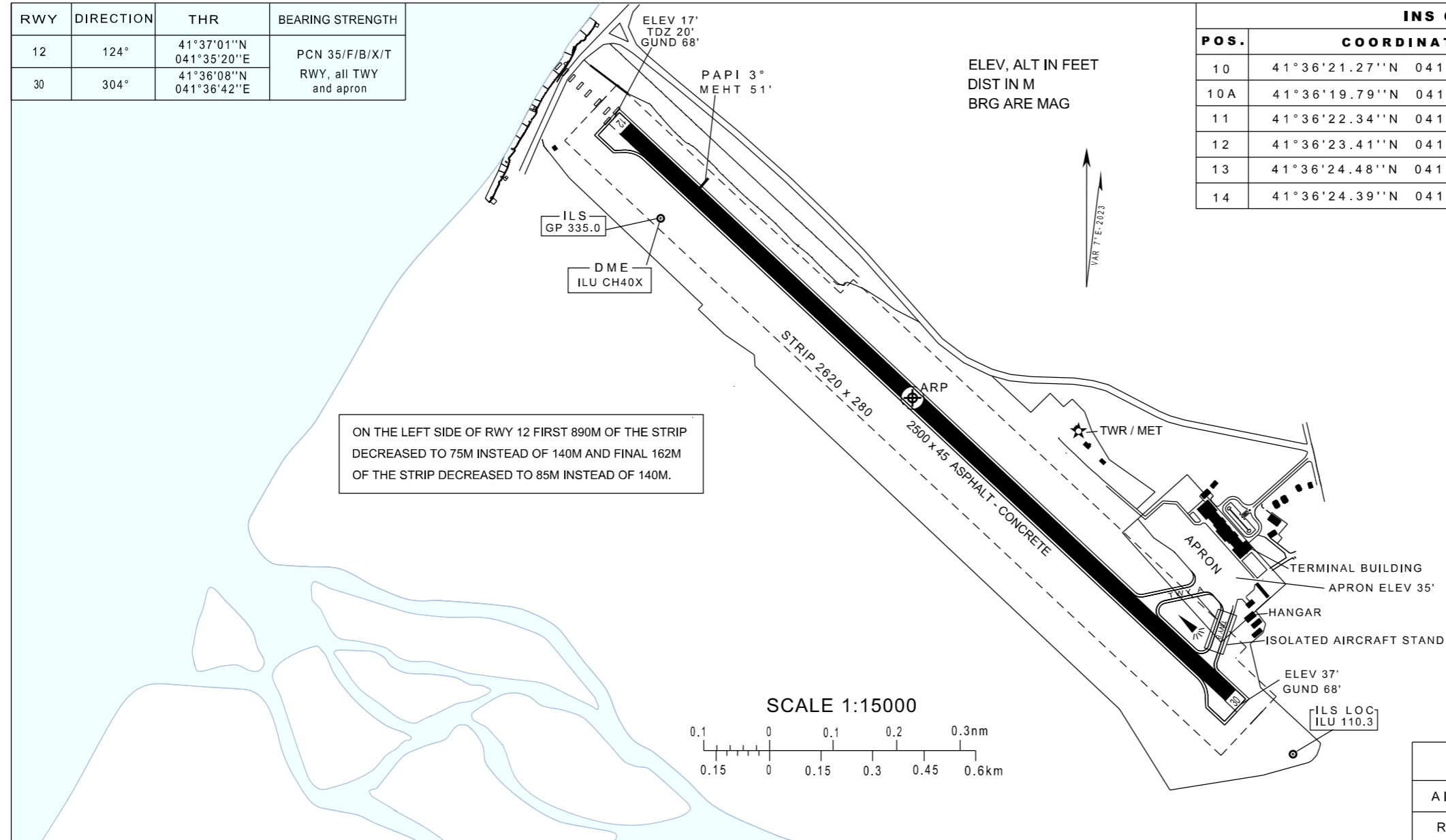
41°36'37" N
041°35'58" E

ELEV. 37'

TWR 118.6

RWY	DIRECTION	THR	BEARING STRENGTH
12	124°	41°37'01"N 041°35'20"E	PCN 35/F/B/X/T RWY, all TWY and apron
30	304°	41°36'08"N 041°36'42"E	

INS COORDINATES FOR AIRCRAFT STANDS					
POS.	COORDINATES		POS.	COORDINATES	
10	41°36'21.27''N	041°36'39.74''E	14A	41°36'25.04''N	041°36'31.63''E
10A	41°36'19.79''N	041°36'41.44''E	15	41°36'25.07''N	041°36'32.19''E
11	41°36'22.34''N	041°36'38.36''E	15A	41°36'25.49''N	041°36'32.26''E
12	41°36'23.41''N	041°36'36.98''E	16	41°36'25.74''N	041°36'33.12''E
13	41°36'24.48''N	041°36'35.60''E	16A	41°36'26.02''N	041°36'32.27''E
14	41°36'24.39''N	041°36'31.26''E			



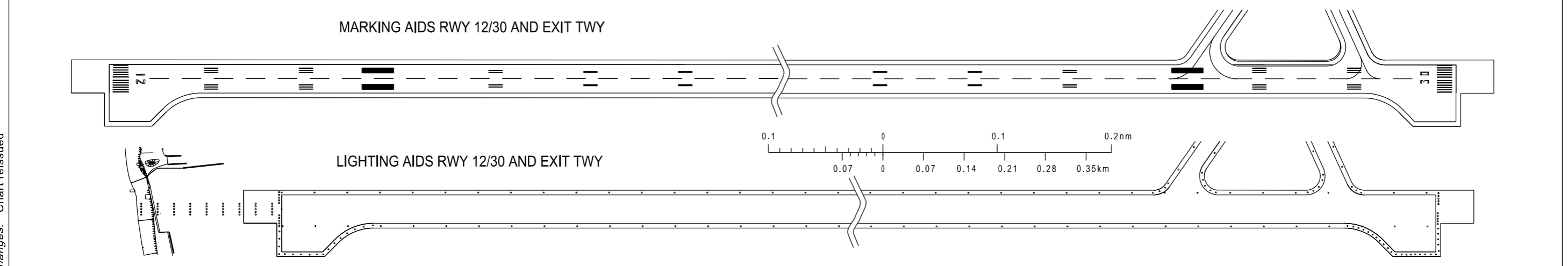
TAXIWAYS WIDTH, SURFACE

TWY A : 23 M Asphalt-Concrete
TWY B : 23 M Asphalt-Concrete

Aircraft stands № 14, 14A, 15, 15A, 16, 16A - Asphalt-PCN 54/F/B/X/T

LEGEND

AIRCRAFT STAND	○13
RWY-HOLDING POSITION MARKING PATTERN A	▬▬▬▬▬▬



Changes: Chart reissued