

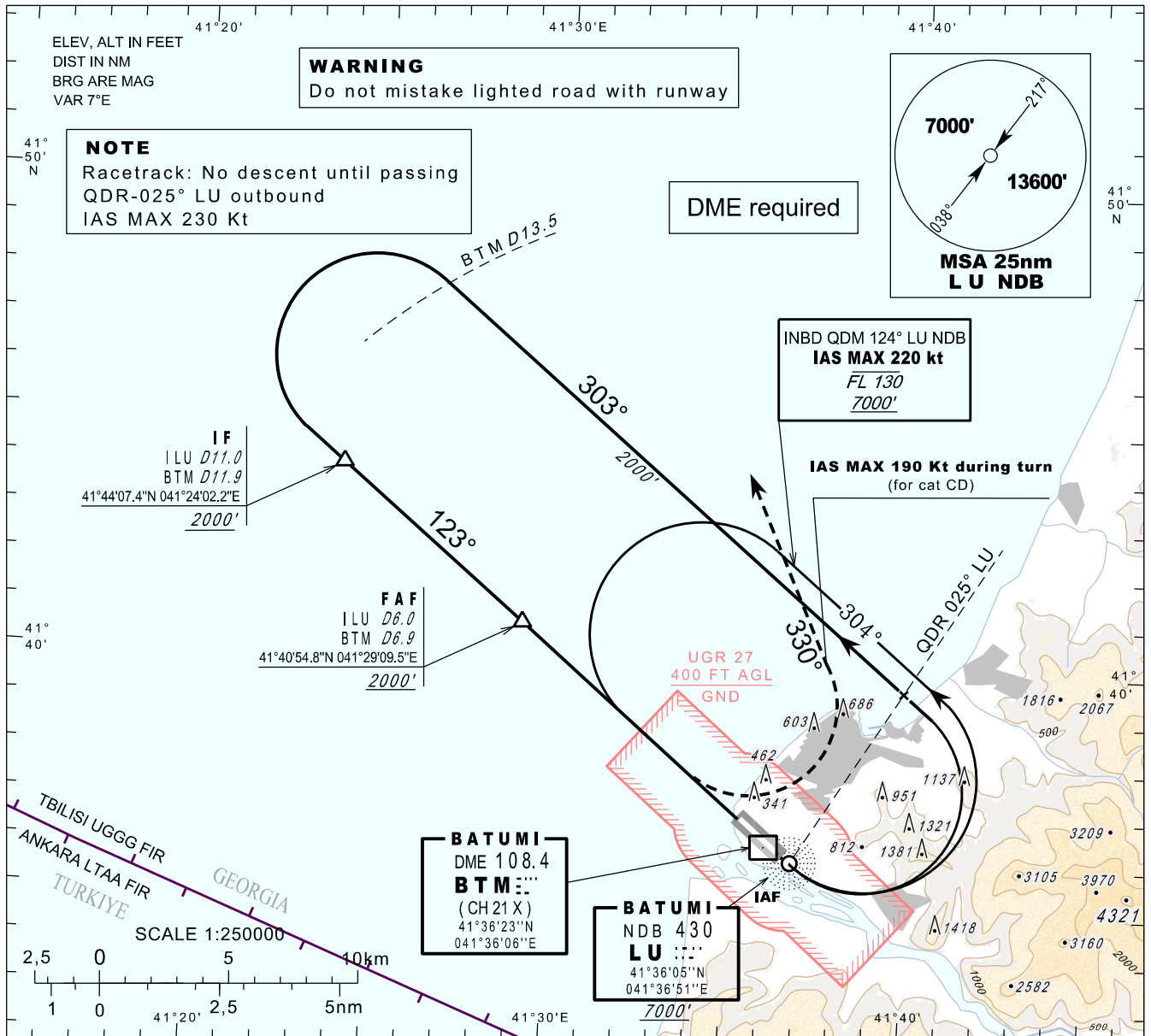
**INSTRUMENT
APPROACH
CHART - ICAO**

AERODROME ELEV 37'
HEIGHTS RELATED TO
THR RWY 12 - ELEV 17'

APP 124.425
TWR 118.600

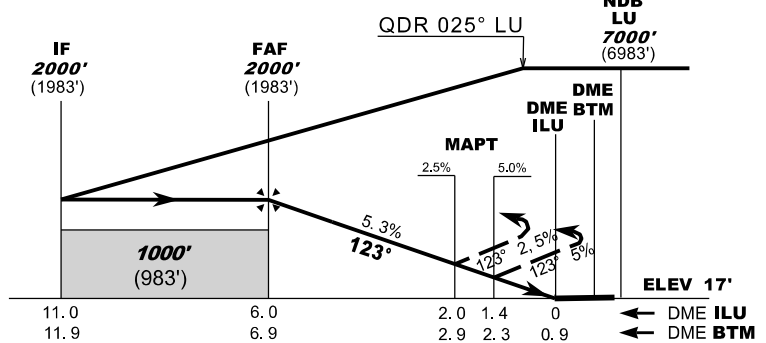
**BATUMI (UGSB)
NDB
RWY 12**

TRANSITION ALT 7000'



MISSED APPROACH

Climb on QDM 123° NDB LU. At 800' turn left heading 330° climbing to 3000' and follow ATC instructions.
IAS MAX 190 KT until turn is completed (for cat CD).



Timing is not authorised for defining the MAPT

Straight-in Approach	
Missed APCH climb gradient	OCA (H)
	A B C D
2.5%	750 (730)
5.0%	540 (520)

DME BTM NM	7	6	5	4	3	2
DME ILU NM	6.1	5.1	4.1	3.1	2.1	1.1
ALT (HGT) ft	2032 (2015)	1712 (1695)	1393 (1376)	1073 (1056)	753 (736)	433 (416)

Changes: Chart reissued