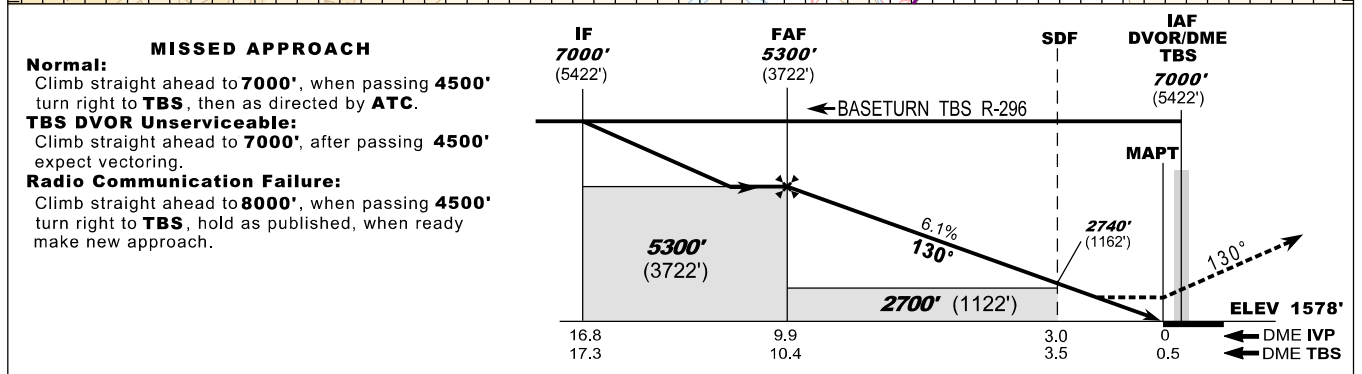
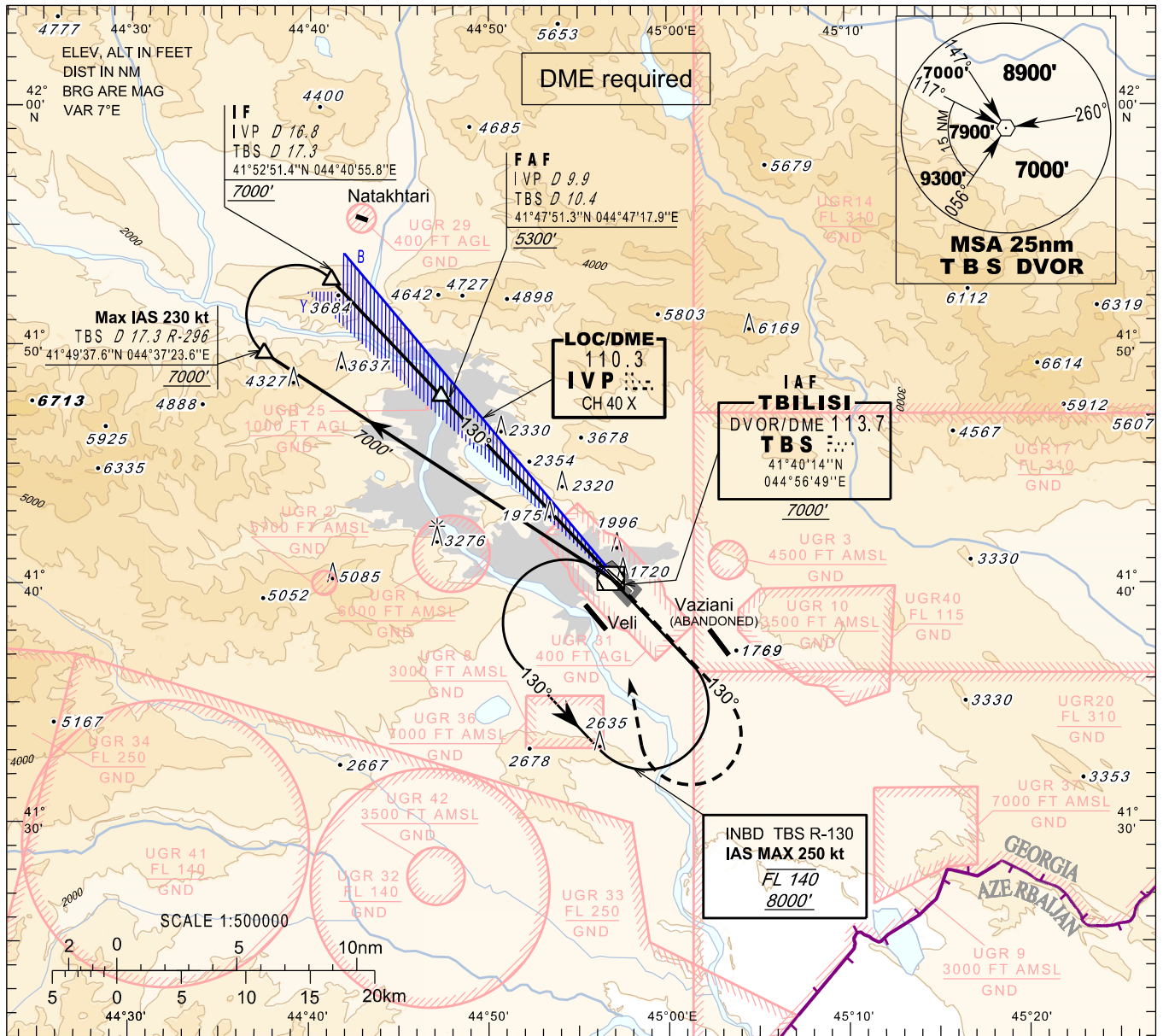


**INSTRUMENT
APPROACH
CHART - ICAO**

AERODROME ELEV. 1578'
HEIGHTS RELATED TO
THR RWY 13R - ELEV 1578'
TRANSITION ALTITUDE 11000'

APP 134.600
TWR 119.000 (Primary)
128.000 (Secondary)
ATIS 132.800

TBILISI/Tbilisi (UGTB)
LOC y
RWY 13R



Straight in Approach	A B C D									
	OCA(H) 2280 (700)									
DME IVP NM	9	8	7	6	5	4	3	2	1	
DME TBS NM	9.5	8.5	7.5	6.5	5.5	4.5	3.5	2.5	1.5	
ALT (HGT) ft	4966 (3388)	4595 (3017)	4224 (2646)	3853 (2275)	3482 (1904)	3111 (1533)	2740 (1162)	2369 (791)	1998 (420)	

Changes: Chart reissued