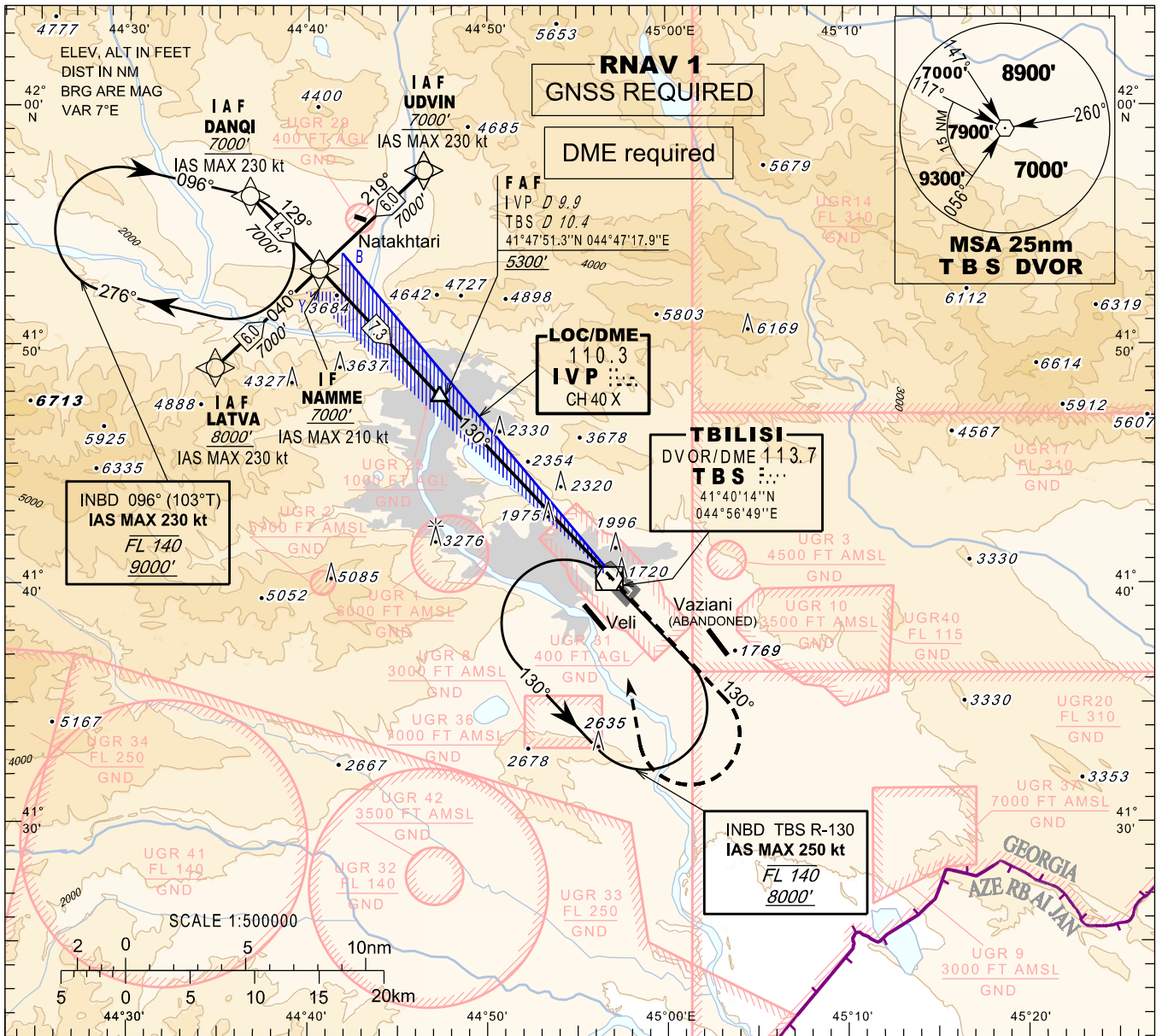


**INSTRUMENT
APPROACH
CHART - ICAO**

AERODROME ELEV. 1578'
HEIGHTS RELATED TO
THR RWY 13R - ELEV 1578'
TRANSITION ALTITUDE 11000'

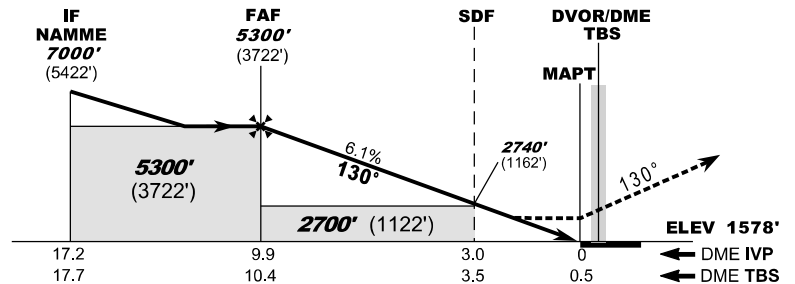
APP 134.600
TWR 119.000 (Primary)
128.000 (Secondary)
ATIS 132.800

TBILISI/Tbilisi (UGTB)
LOC z
RWY 13R



MISSED APPROACH

- Normal:** Climb straight ahead to 7000', when passing 4500' turn right to TBS, then as directed by ATC.
- TBS DVOR Unserviceable:** Climb straight ahead to 7000', after passing 4500' expect vectoring.
- Radio Communication Failure:** Climb straight ahead to 8000', when passing 4500' turn right to TBS, hold as published, when ready make new approach (ILS y or LOC y or VOR).



Timing is not authorised for defining the MAPT

Straight in Approach	A B C D									
OCA(H)	2280 (700)									
DME IVP NM		9	8	7	6	5	4	3	2	1
DME TBS NM		9.5	8.5	7.5	6.5	5.5	4.5	3.5	2.5	1.5
ALT (HGT) ft		4966 (3388)	4595 (3017)	4224 (2646)	3853 (2275)	3482 (1904)	3111 (1533)	2740 (1162)	2369 (791)	1998 (420)

Changes: Chart reissued