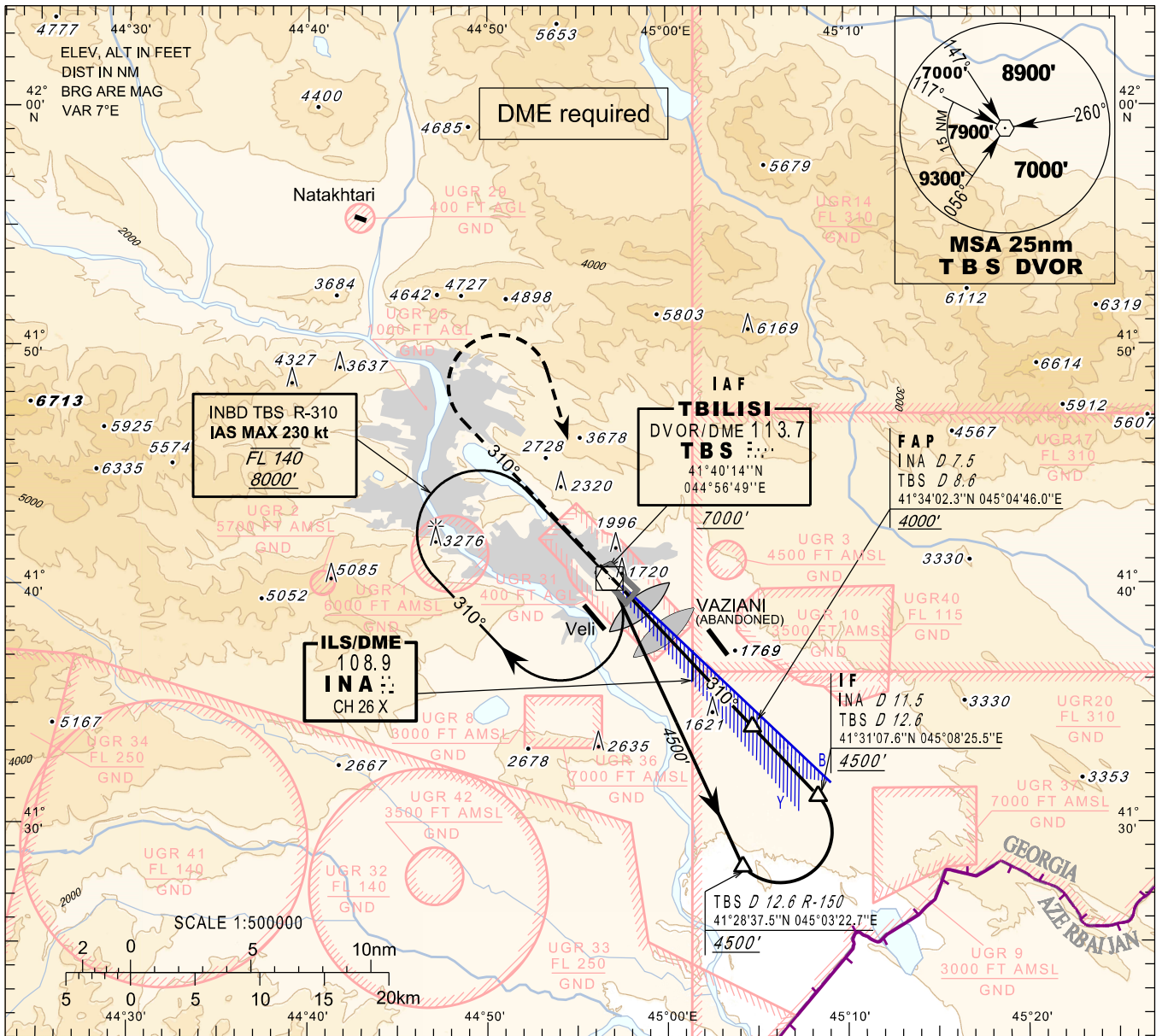


**INSTRUMENT
APPROACH
CHART - ICAO**

AERODROME ELEV. 1578'
HEIGHTS RELATED TO
THR RWY 31L - ELEV 1513'
TRANSITION ALTITUDE 11000'

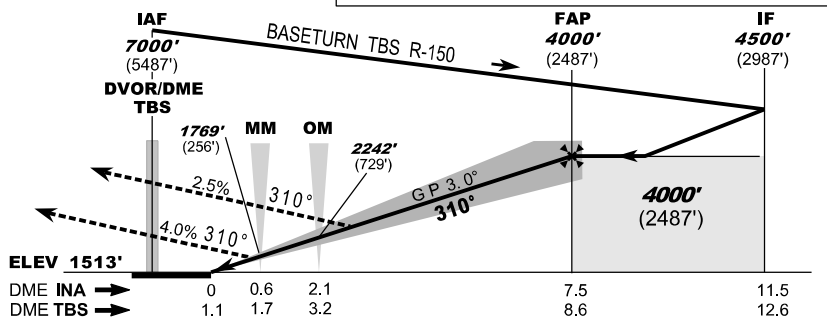
APP 134.600
TWR 119.000 (Primary)
128.000 (Secondary)
ATIS 132.800

**TBILISI/Tbilisi (UGTB)
ILS y
RWY 31L**



MISSED APPROACH
Normal: Climb straight ahead to 7000', when passing 6000' turn right to TBS, then as directed by ATC.
TBS DVOR Unserviceable: Climb straight ahead to 7000', when passing 6000' turn right heading 170°, expect vectoring.
Radio Communication Failure: Climb straight ahead to 8000', when passing 6000' turn right to TBS, hold as published, when ready make new approach.

WARNING:
1. **DO NOT CONFUSE** TBILISI/Tbilisi airport with VAZIANI military aerodrome located 4 nm south-east of TBILISI/Tbilisi airport.
2. Possibility of **WIND SHEAR** and **TURBULENCE** on final (including short final) should be considered during strong winds due to local topography.



ILS RDH 54'

Missed APCH climb gradient	Straight in Approach OCA(H)			
	A	B	C	D
2.5%	2376 (863)	2394 (881)	2403 (890)	
4.0%	1703 (190)	1713 (200)	1723 (210)	

	0	1	2	3	4	5	6	7	8	9
ELEV 1513'										
DME INA →	0	0.6	2.1							
DME TBS →	1.1	1.7	3.2							
DME INA NM		7	6	5	4	3	2	1		
DME TBS NM		8.1	7.1	6.1	5.1	4.1	3.1	2.1		
ALT (HGT) ft		3839 (2326)	3510 (1997)	3181 (1668)	2855 (1342)	2530 (1017)	2208 (695)	1886 (373)		

Changes: Chart reissued