

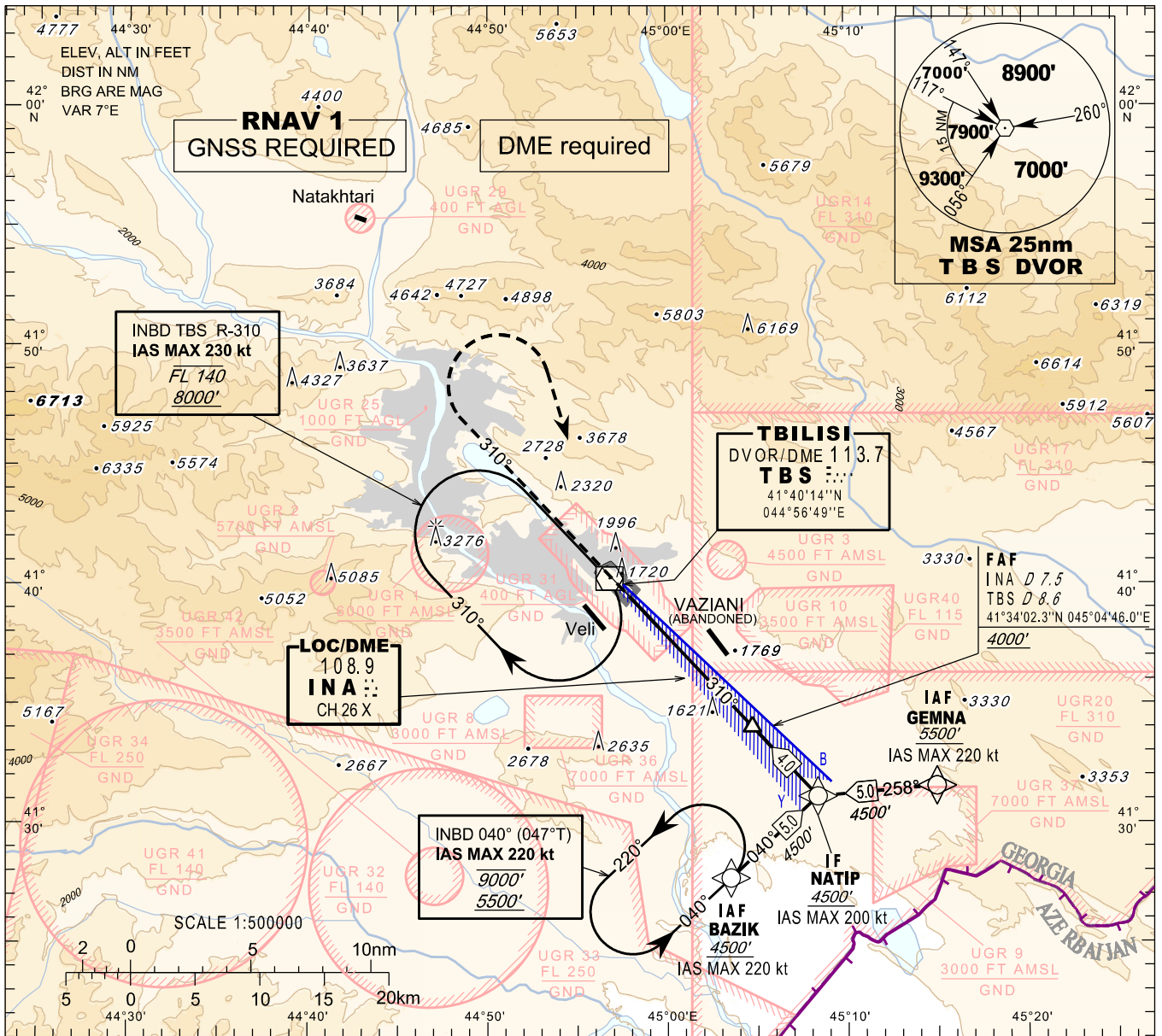
**INSTRUMENT
APPROACH
CHART - ICAO**

AERODROME ELEV. 1578'
HEIGHTS RELATED TO
THR RWY 31L - ELEV 1513'

APP 134.600
TWR 119.000 (Primary)
128.000 (Secondary)
ATIS 132.800

TBILISI/Tbilisi (UGTB)
LOC z
RWY 31L

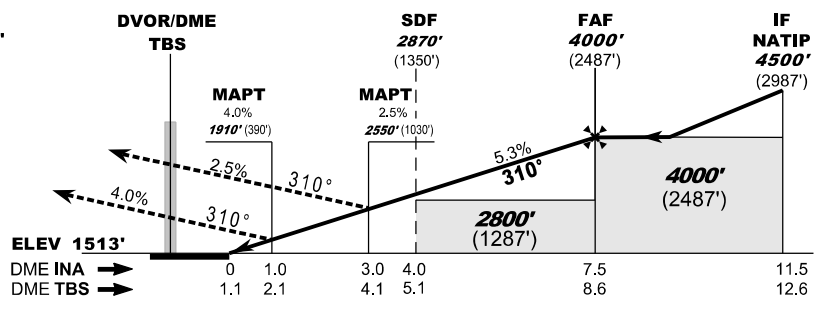
TRANSITION ALTITUDE 11000'



MISSED APPROACH
Normal: Climb straight ahead to 7000', when passing 6000' turn right to TBS, then as directed by ATC.
TBS DVOR Unserviceable: Climb straight ahead to 7000', when passing 6000' turn right heading 170, expect vectoring.
Radio Communication Failure: Climb straight ahead to 8000', when passing 6000' turn right to TBS, hold as published, when ready make new approach (ILS y or LOC y or VOR).

Timing is not authorised for defining the MAPT

WARNING:
1. **DO NOT CONFUSE** TBILISI/Tbilisi airport with VAZIANI military aerodrome located 4 nm south-east of TBILISI/Tbilisi airport.
2. Possibility of **WIND SHEAR** and **TURBULENCE** on final (including short final) should be considered during strong winds due to local topography.



Straight in Approach		OCA(H)			
Missed APCH climb gradient		A	B	C	D
2.5%		2550			(1030)
4.0%		1910			(390)

DME INA NM	7	6	5	4	3	2	1
DME TBS NM	8.1	7.1	6.1	5.1	4.1	3.1	2.1
ALT (HGT) ft	3837 (2324)	3512 (1999)	3187 (1674)	2862 (1349)	2537 (1024)	2212 (699)	1887 (374)

Changes: Chart reissued