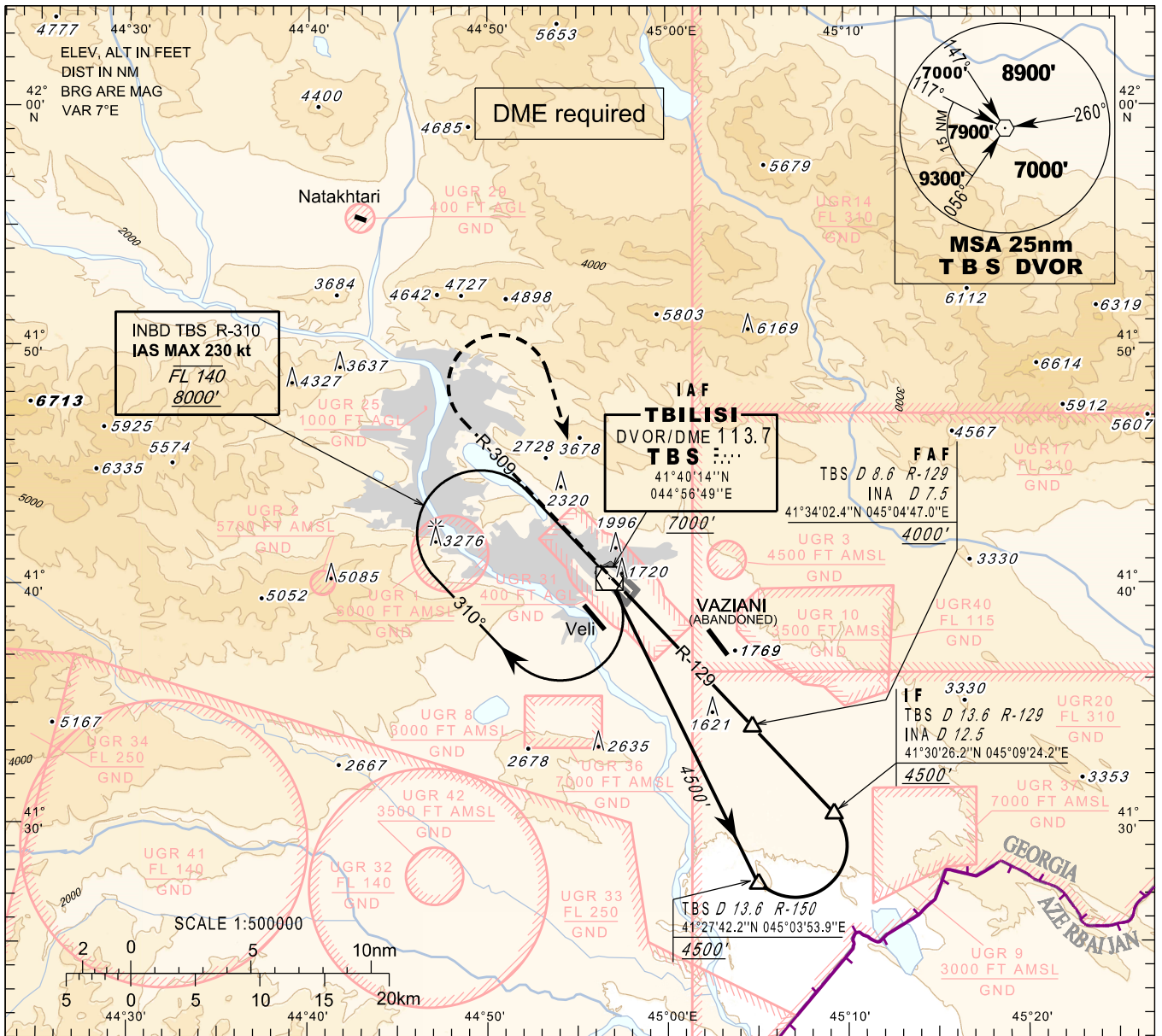


**INSTRUMENT
APPROACH
CHART - ICAO**

AERODROME ELEV. 1578'
HEIGHTS RELATED TO
THR RWY 31L - ELEV 1513'
TRANSITION ALTITUDE 11000'

APP 134.600
TWR 119.000 (Primary)
128.000 (Secondary)
ATIS 132.800

**TBILISI/Tbilisi (UGTB)
VOR
RWY 31L**



MISSED APPROACH

Normal:
Climb on **R-309 TBS** to **7000'**, when passing **6000'** turn right to **TBS**, then as directed by **ATC**.

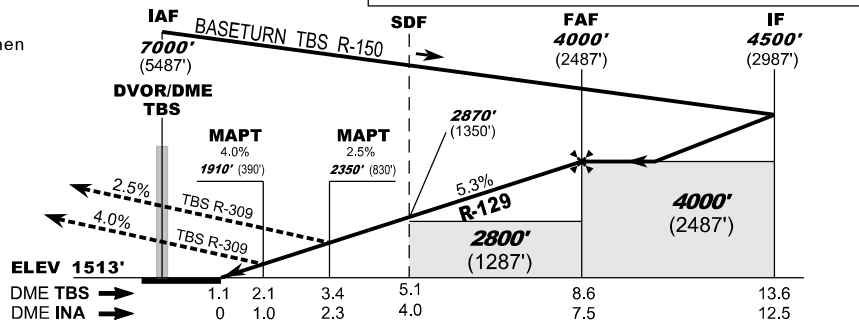
Radio Communication Failure:
Climb on **R-309 TBS** to **8000'**, when passing **6000'** turn right to **TBS** and hold as published, when ready make new approach.

Timing is not authorised for defining the MAPT

WARNING:

1. **DO NOT CONFUSE** TBILISI/Tbilisi airport with VAZIANI military aerodrome located 4 nm south-east of TBILISI/Tbilisi airport.
2. Possibility of **WIND SHEAR** and **TURBULENCE** on final (including short final) should be considered during strong winds due to local topography.

Straight in Approach		OCA(H)			
Missed APCH	climb gradient	A	B	C	D
2.5%		2350		(830)	
4.0%		1910		(390)	



DME TBS NM	8	7	6	5	4	3	2
DME INA NM	6.9	5.9	4.9	3.9	2.9	1.9	0.9
ALT (HGT) ft	3807 (2294)	3482 (1969)	3157 (1644)	2832 (1319)	2507 (994)	2182 (669)	1857 (344)

Changes: Chart reissued