

**STANDARD ARRIVAL CHART -  
INSTRUMENT (STAR) - ICAO**

**TBILISI/Tbilisi (UGTB)**

**RNAV RWY 31L**

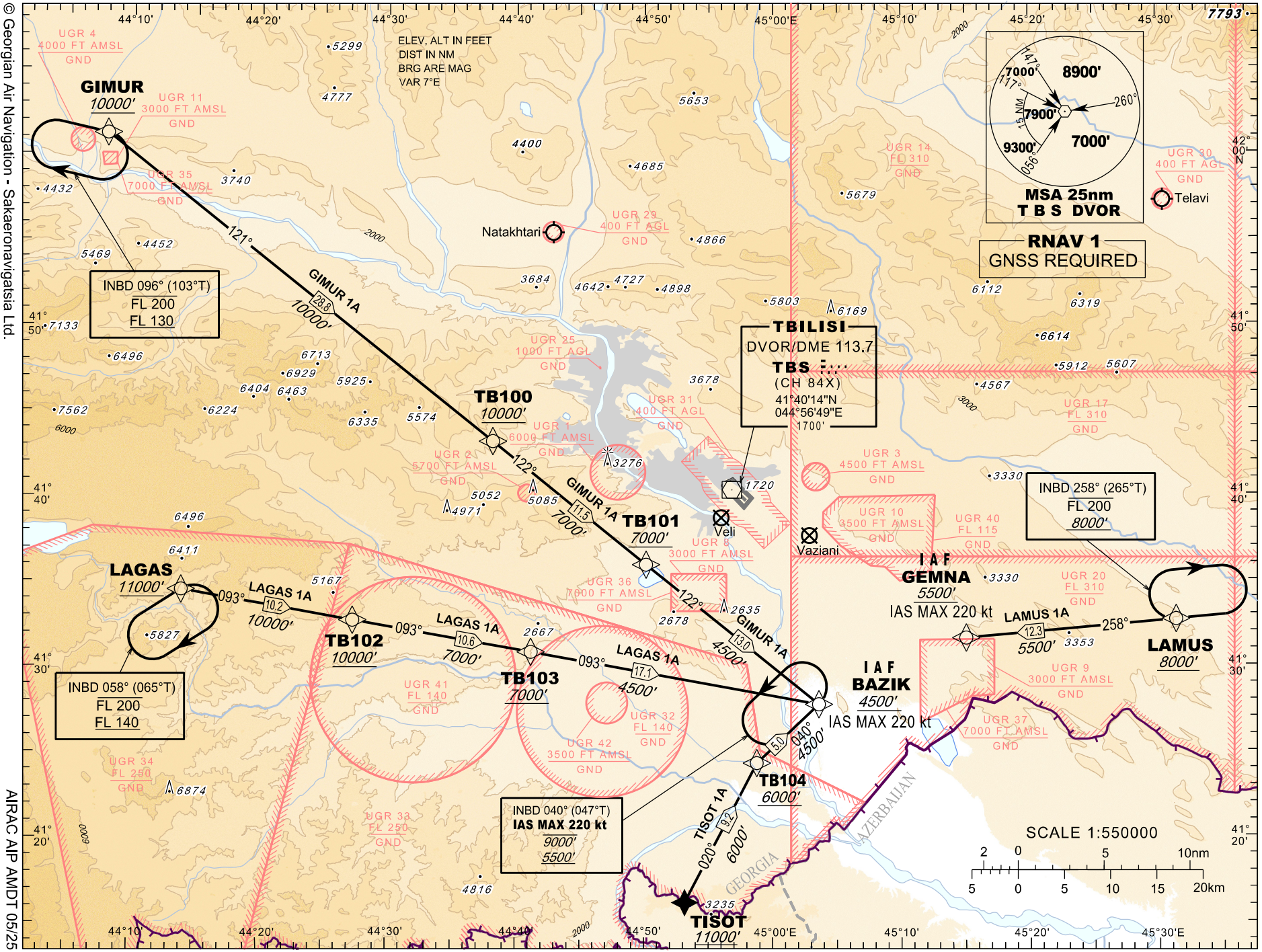
TRANSITION LEVEL FL 130  
TRANSITION ALTITUDE 11000'

APP 134,600  
TWR 119,000 (Primary)  
128,000 (Secondary)  
ATIS 132,800

GIMUR 1A LAMUS 1A  
TISOT 1A LAGAS 1A

Changes: Chart reissued

© Georgian Air Navigation - Sakaeonavigatsia Ltd.



AIRAC AIP AMDT 05/25