

**STANDARD DEPARTURE CHART -  
INSTRUMENT (SID) - ICAO**

**TBILISI/Tbilisi (UGTB)**

**RWY 13R/31L**

DF 1D DF 1E

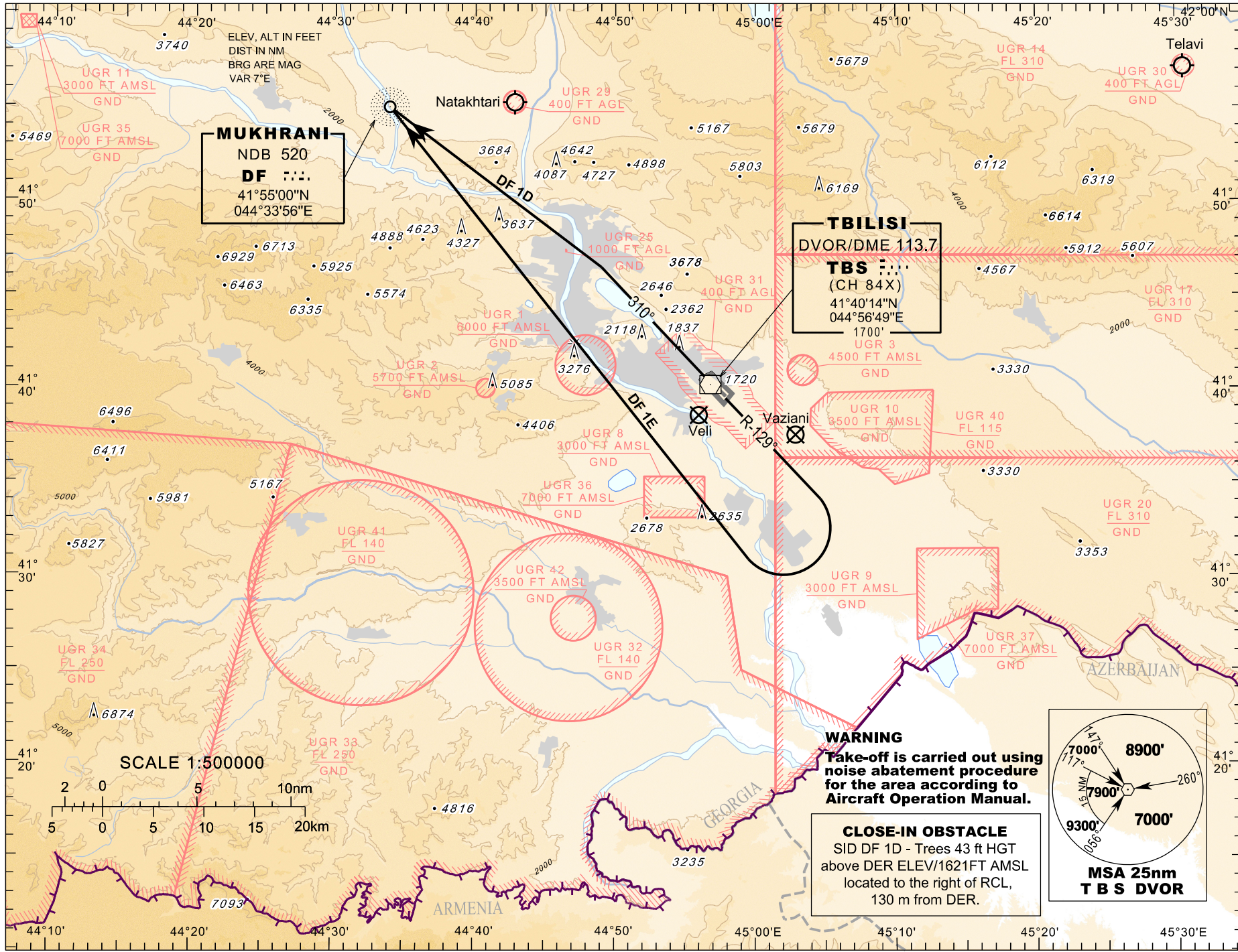
TRANSITION ALTITUDE  
11000'

APP 134,600  
TWR 119,000 (Primary)  
128,000 (Secondary)

Changes: Chart reissued

© Georgian Air Navigation - Sakaeronavigatsia Ltd.

AIRAC AIP AMDT 05/25



ELEV, ALT IN FEET  
DIST IN NM  
BRG ARE MAG  
VAR 7°E

